



Jaguar and Rover Triumph
Parts & Accessories
BRITISH LEYLAND UK LIMITED
Fletchamstead Highway
Coventry
England CV4 9DB

FITTING INSTRUCTIONS

Publication 320811

Issue 1 March 1975

SAFETY HARNESS—INERTIA REEL SINGLE-HANDED OPERATION LH OR RH

Kit Part Nos.

RTC 1939, RTC 1940

RTC 1943, RTC 1944

for the

LAND-ROVER

ALL MODELS

SAFETY HARNESS INERTIA REEL SINGLE-HANDED OPERATION KITS

The Britax safety harness is a lap and diagonal type, it has two main components, a short flexible shaft carrying the buckle and a long combined diagonal shoulder and lap strap on which the mating lug is fitted.

IMPORTANT: These harnesses have been scientifically designed and tested to meet the requirements of BS.3254. Alterations and additions must not be made to this harness. If in any doubt consult the manufacturers.

Seat belts which have been used in an accident or are frayed or cut must be replaced.

<u>DESCRIPTION</u>	<u>QTY</u>	<u>PART NO</u>	<u>REMARKS</u>
Safety harness kit RH	1	RTC1939) All models except) 109 Station Wagon
Safety harness kit LH	1	RTC1943	
Safety harness kit RH	1	RTC1940) 109 Station Wagon
Safety harness kit LH	1	RTC1944	
Safety harness RH	1	MRC2541) 109 Station Wagon
Safety harness LH	1	MRC2541	
Safety harness RH	1	MRC2540) 88 and 109) all models
Safety harness LH	1	MRC2540	
Reinforcing plate	1	MRC0018)
Mounting bracket	1	MRC0017	
Bolt) Reinforcing	2	255246) 88 only
Plain washer) plate to	2	4883	
Spring washer) mounting bracket	2	3076	
Nut) to bulkhead	2	254812	
Reinforcing plate	1	396199	
Pop rivet for reinforcing plate	4	79312	109 only
Guard plate	1	345937	
Stowage hook	1	347541	
Drive screw for stowage hook	1	78155	
Bolt)	2	255207	
Plain washer) Reinforcing	2	4071	
Spring washer) plate to cab	2	3074	
Nut) rail	2	254810	
Bolt)	1	255068) 109 cab truck
Shakeproof washer) Loop to cab rail	1	72001	
Plain washer)	1	4580	

NOTE: The Manufacturers reserve the right to vary their specifications with or without notice, and at such times and in such manner as they think fit. Major as well as minor changes may be involved in accordance with the Manufacturer's policy of constant product improvement.

Whilst every effort is made to ensure the accuracy of the particulars contained in this Fitting Instruction, neither the Manufacturers nor the Distributor or Dealer by whom this Fitting Instruction is supplied, shall in any circumstances be held liable for any inaccuracy or the consequences thereof.

- A - 109 SW
- B - 88
- C - 109
- D - 109 Cab truck

Procedure - Ensure hands are clean before handling seat harnesses.

These instructions will apply to either LH or RH installations. The illustrations show fitment to driver's side only. It is important to note that on installations other than the 109 SW the inertia reel centre fixing bolt should be vertically in line with the centre of the loop so that the belt will run freely.

1. A. Mark out position for hole to be drilled on kick plate to mount inertia reel (see Fig.A). Drill hole 11.1125 mm (.437") diameter and offer inertia reel into position and secure using bolt, nut and washers supplied.
1. B. Mark out the position for fixing loop on top rail and fixing strengthening plate on the bulkhead (See Fig.B). Using strengthening plate MRC0018 as as template and positioning centrally with loop fixing holes, 44.45 mm (1.75") from the top of the capping drill four holes 4.7625 mm (.187") diameter through the bulkhead. Secure the strengthening plate to the front of the bulkhead using pop rivets 79312. The two large holes may now be drilled through the bulkhead and should be 9.525 mm (.375") diameter. Offer bracket MRC0017 into position from the rear of the bulkhead and secure using two bolts, nuts and washers. Fix the inertia reel to the bracket MRC0017 using bolt, nut and washers supplied.
1. C. Mark out the position for fixing loop on top rail and the bulkhead (see Fig.C), drill out rivets W(6) on rear edge of top rail and position strengthening plate 396199 so that the inertia reel mounting hole lines up with the centre of the loop fixing and that the plate sits well onto the capping and over the joint shown in illustration. Using strengthening plate as a template, drill the two lower holes 4.7625 mm (.187") through the bulkhead and from the front of the bulkhead fit two pop rivets 79312. Now drill two upper holes 6.35 mm (.25") through capping and bulkhead and secure with bolts 255207, nuts 254810, spring washer 3074 and plain washer 4071. The inertia reel mounting hole can now be drilled 11.1125 mm (.437") through the bulkhead. Offer the inertia reel into position from front of bulkhead and secure using bolt, nut and washers.
1. D. Same as C above except that 2nd line should read drill out rivets X(6) on rear of cab rail (see Fig.D).
2. A.B. If fitted, remove the blanking plug from the sill bracket and fit lug C.D. of safety harness to bracket using wavy washer spacer and screw.
3. A. If fitted, remove the blanking plug from the BC post and fit lug of harness to the tapped hole using wavy washer, spacer and screw (see Fig.A).
3. B. Working from the original safety harness mounting point in the top rail, drill out rivets Y(3), one on the outside and two on the inside. Open up the two outer holes which should be at 76.2 mm (3.00") centres to 7.9375 mm (.3125") and fix the loop and guard bracket onto the rail using two bolts, nuts and washers supplied. It will be found necessary to move one seat retaining strap and stud towards the inside of the vehicle to allow the loop to be fitted flush on the rail. (See Fig.B).

3. C. Same as B above except that it will be found necessary to move the seat buffer bracket towards the inside of the vehicle instead of the seat retaining strap and stud (see Fig.C).
3. D. Drill the outer fixing hole of the loop to 11.1125 mm (.437"). Drill rivets Z(2) out of rail so that the loop lies flush, now fix the loop to the rail using bolt and washers to the existing harness mounting point. Using the loop as a template, drill one hole 7.9375 mm (.3125") through the rail and secure other side of loop using bolt, nut and washers. It will be found necessary to move a seat buffer bracket towards the inside of the vehicle to allow the loop to be fitted flush. (See Fig.D).
4. A.B. Release the front seat and pull forward, this giving access to the
C.D. harness centre fixing point or bracket.
5. A.B. Remove the blanking plug from the inner hole of the two and fit the
C.D. fixed buckle to the tapped hole using screw, lockwasher and retaining washer. This part of the harness should pass between the squab and backrest of the centre seat.
6. A.B. Drill one hole in a convenient position on BC post and secure stowage
C.D. hook using screw 78155.
7. A.B. Check security of all harness mounting points and that when braking sharply from 15 m.p.h. the belt will lock. The construction of the reel makes it sensitive only to crash conditions.

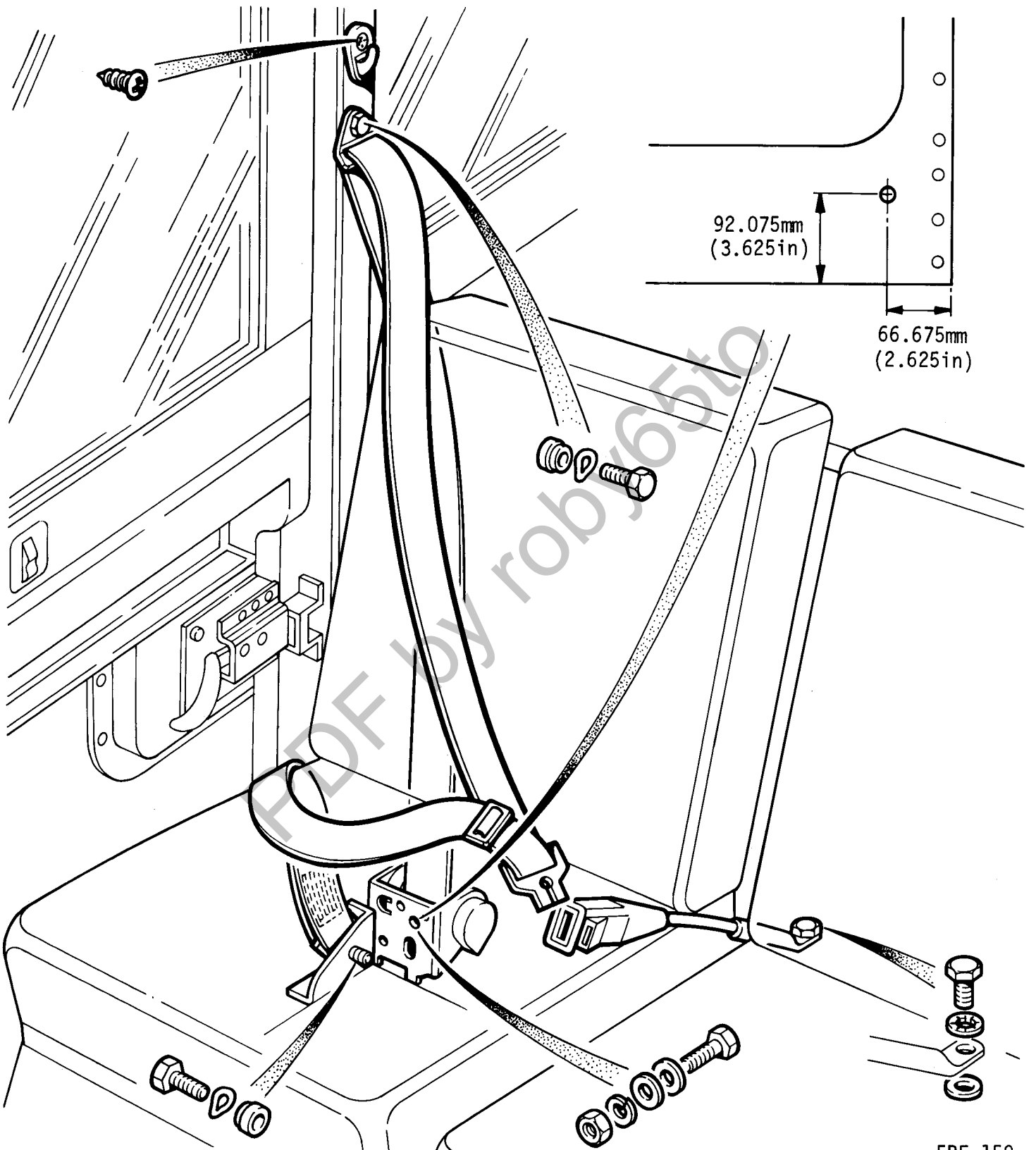


Fig. A

5RE 159

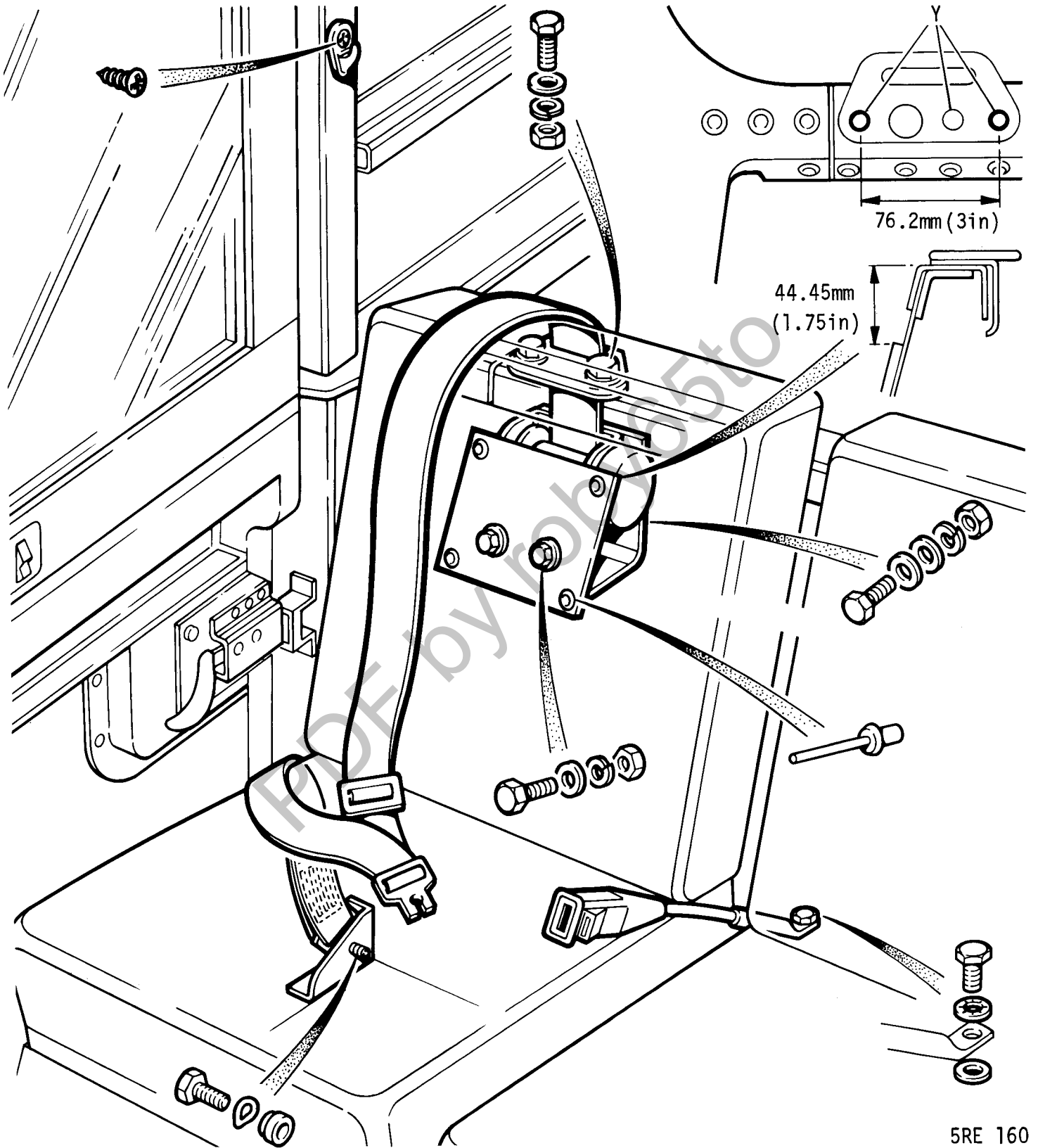


Fig.B

5RE 160

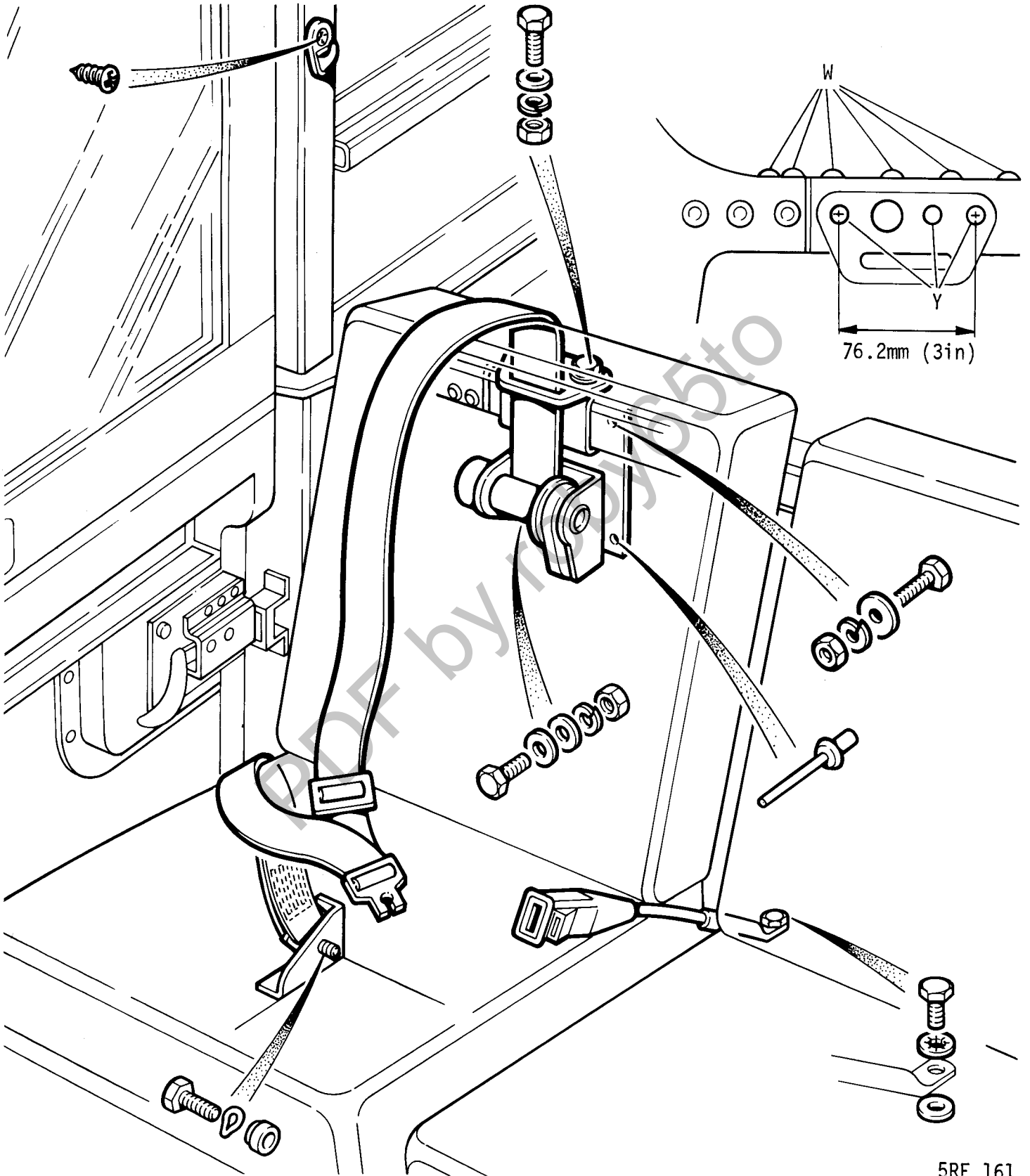


Fig. C

5RE 161

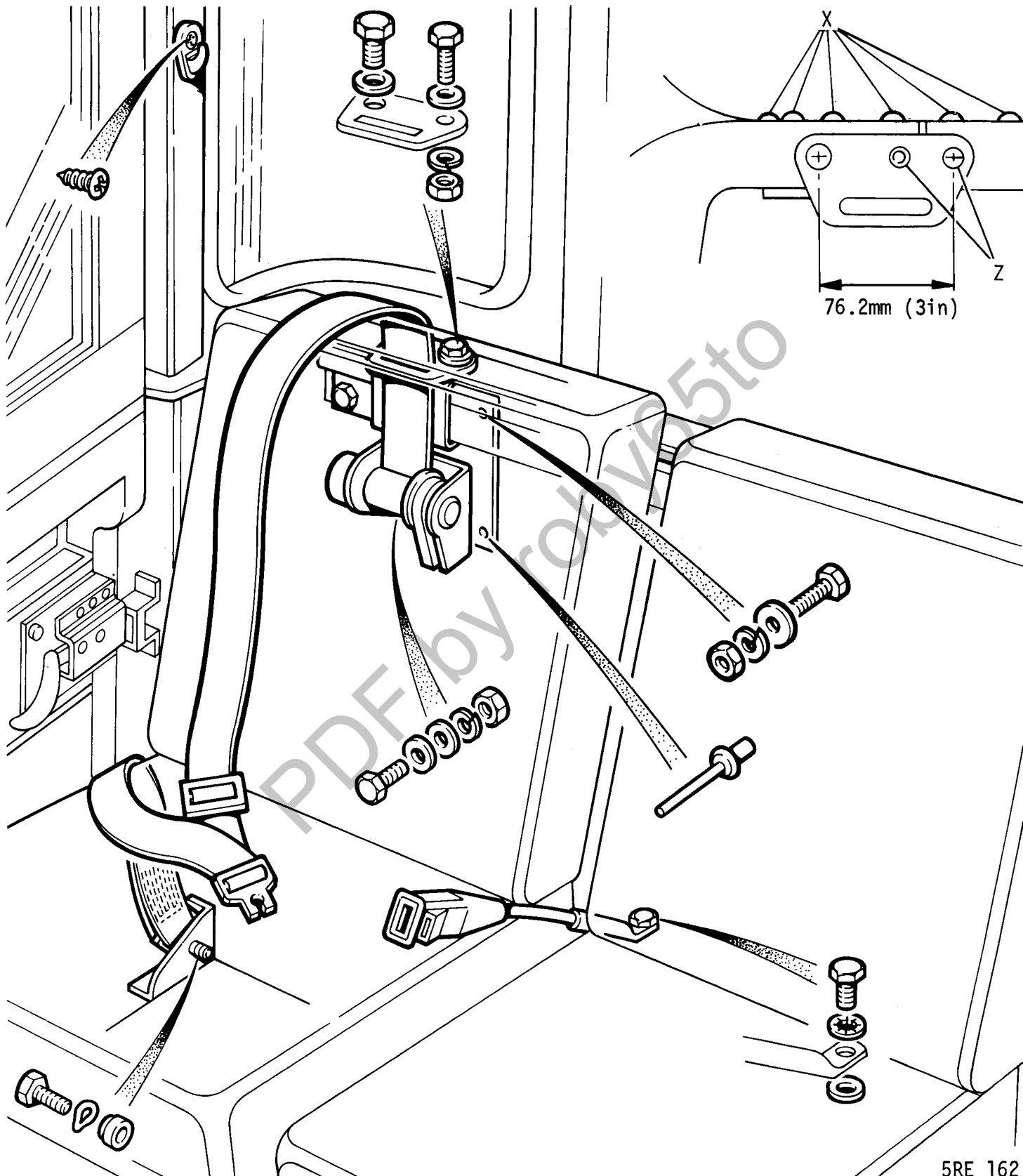


Fig. D

5RE 162