

# TECALEMIT

As approved by the Rover Co. Ltd.  
for use with the

# T.S.U

## TRANSPORTABLE SERVICE UNIT



### SERVICING ON THE SPOT

With Tecalemit Rover mounted specialised maintenance equipment.

Speedy access to Site, whether by normal road or across country.

Complete independence of power supplies on Site.

Minimum servicing time, resulting in all-round savings and contracts completed on time.



TURN WAITING TIME INTO WORKING TIME

### TECALEMIT (ENGINEERING) LIMITED · PLYMOUTH · DEVON

Phone: Plymouth 62844

Grams: Tecalemit Plymouth Telex 45561



TECALEMIT

T.S.U.

A complete lubrication and  
tyre inflation service for plant  
and equipment in the field.



**THE SELF-CONTAINED SERVICING  
UNIT OPERATED INDEPENDENTLY  
OF LAND-ROVER AND SITE POWER.**

The enormous cost of operating heavy plant in the field prohibits servicing other than on Site, frequently whilst the equipment is in action, for this reason alone plant operators are turning to the Tecalemit Rover-mounted T.S.U.

The need for regular lubrication service to all forms of earth moving and mechanical handling equipment is of vital importance if top performance is to be maintained free from breakdowns or costly downtime. The Tecalemit T.S.U. used in conjunction with the Land-Rover, provides a compact,

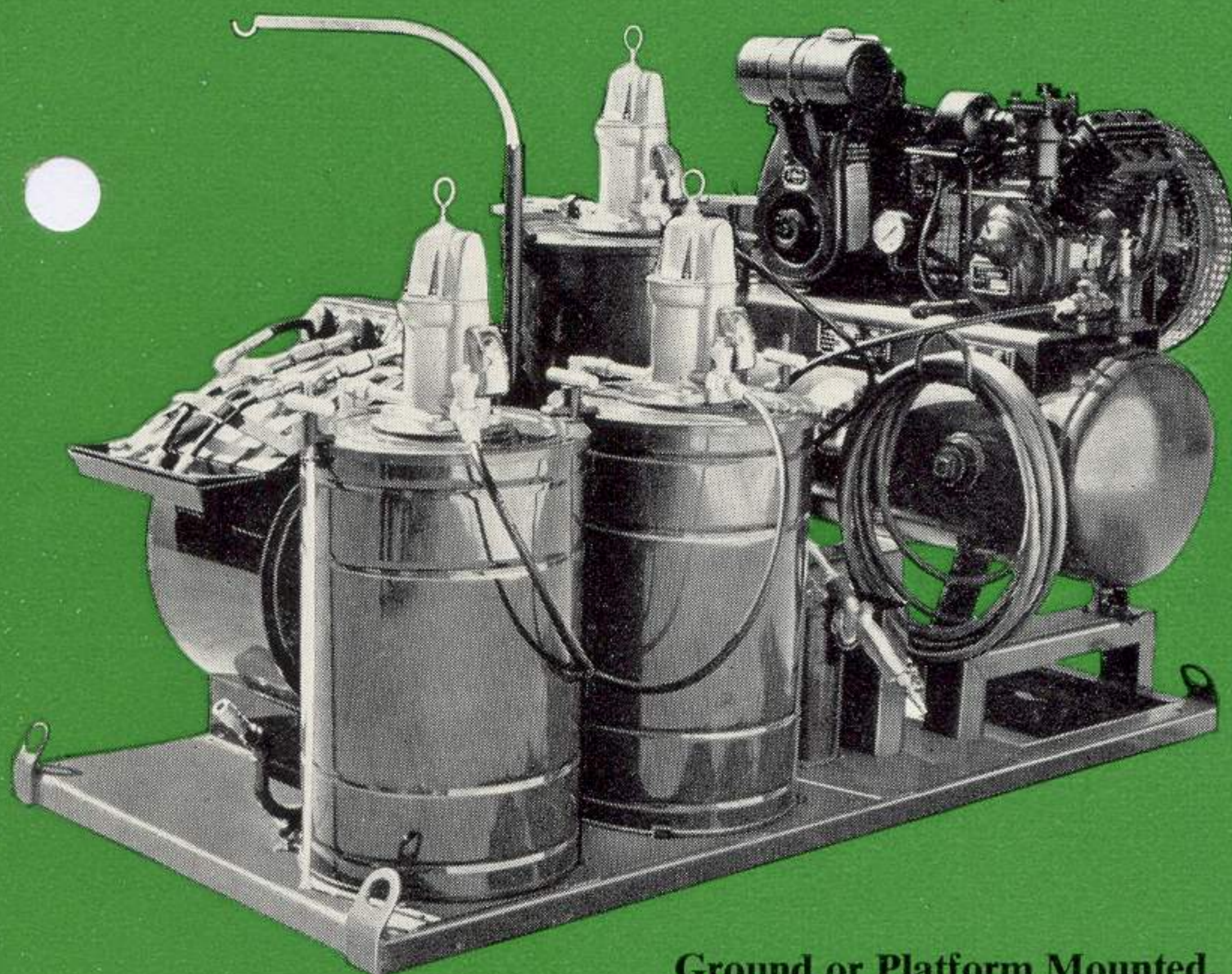
highly efficient service unit, that is able to reach the most remote sites, however difficult and hazardous the terrain.

Units at present in use by overseas contractors, civil engineers and agriculturalists in such operations as bridge and dam building, open-cast mining, mineral deposits, exploration and land reclamation projects have saved time, money and fuel and enabled contracts to be completed to schedule. The Tecalemit T.S.U. can easily be lifted from the Land-Rover, freeing it for other duties if required.

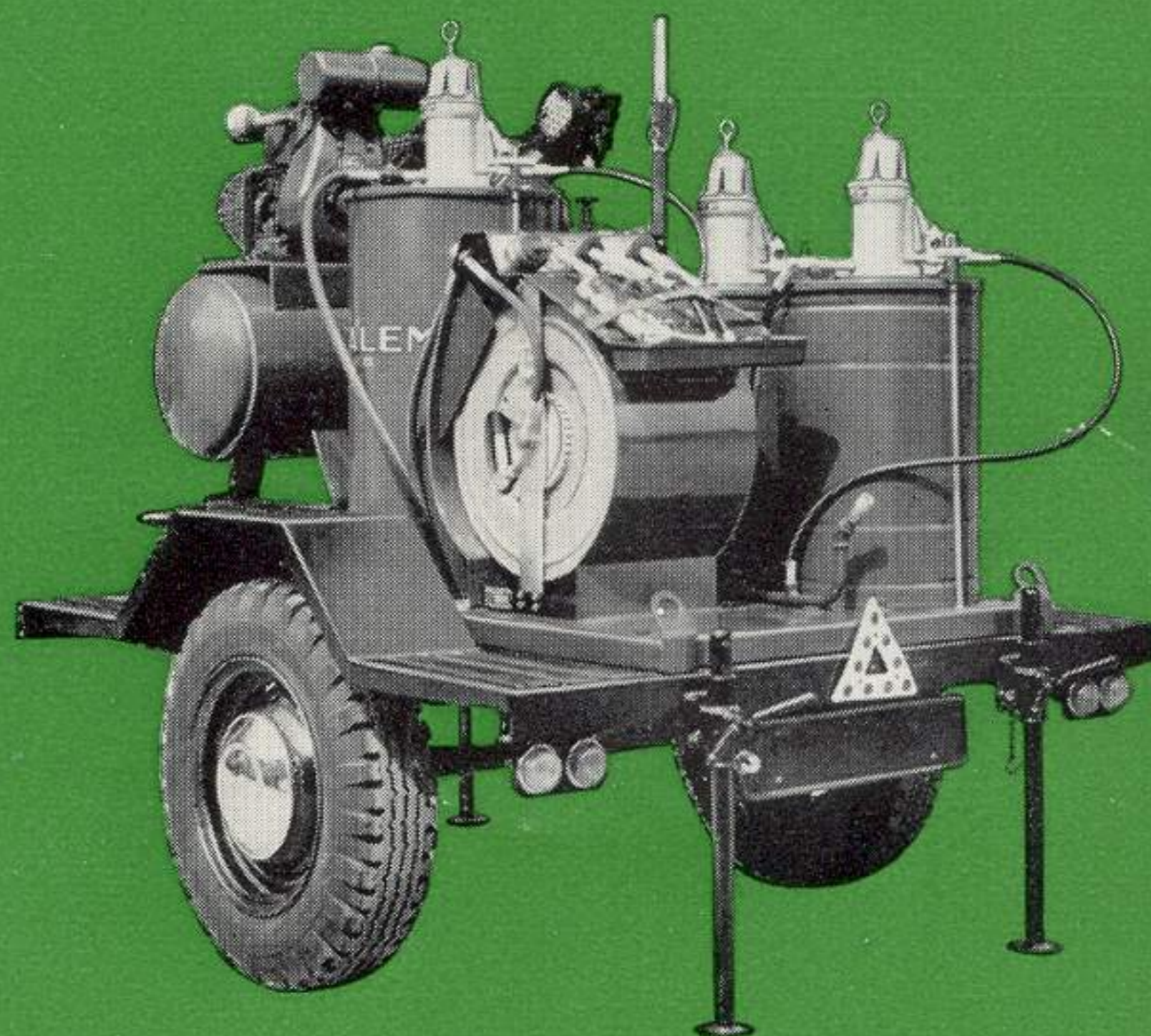
**THE TECALEMIT LAND-ROVER MOUNTED T.S.U. BRINGS**



## ALTERNATIVE ARRANGEMENTS



Ground or Platform Mounted.



Brockhouse Trailer Mounted



Ease of replacing Grease and Oil Drums is enabled by the 'Telescopic Derrick', a device that holds the Delivery Pumps clear during drum replacement.

### TRAILER AND PLATFORM MOUNTING

For Site operators using Land-Rovers for special duties or general ferrying during the work period, a trailer-mounted version of the T.S.U. is available. Built specially for use with the Land-Rover, the Brockhouse trailer can be quickly detached, allowing full use of the Land-Rover for other duties.

The Tecalemit T.S.U. can be mounted on a platform if desired.

### PRINCIPAL COMPONENTS

The Tecalemit T.S.U. is a completely self-contained lubrication plant comprising its own petrol engine driven compressor, air driven grease pumps, hose reels, tyre inflater, penetrating oil sprayer and utilises standard oil companies 112/130 lbs. and 10 gallon drums, the triple hose reel units carry 25 feet of hose and are self-reeling. A 30-ft. air hose is supplied for tyre inflation. Lubricant drums are securely fastened to the steel chassis by means of sturdy clamps preventing all movement when traversing rough ground.

The Tecalemit Land-Rover mounted T.S.U. brings Tecalemit specialised servicing to your Site.

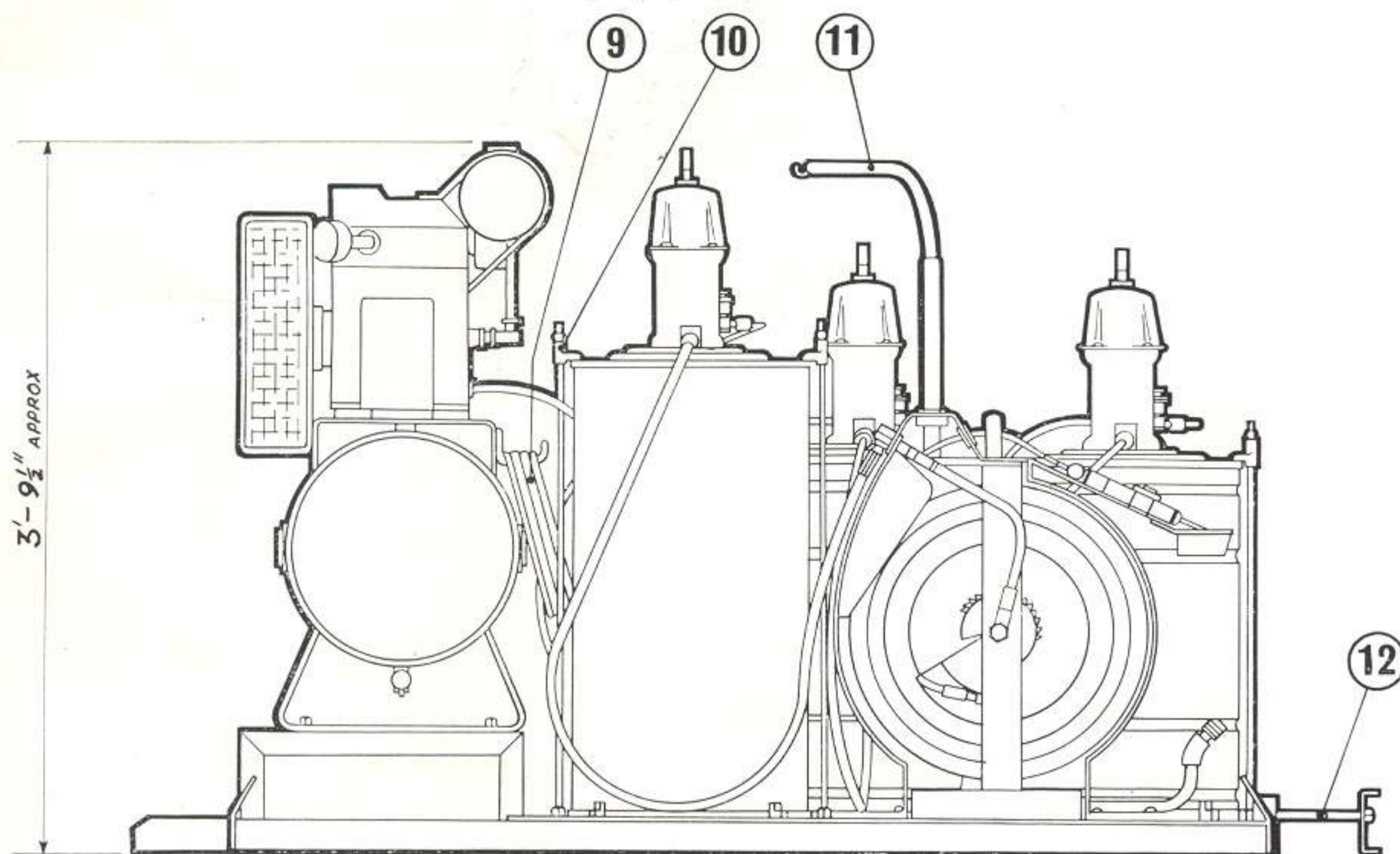
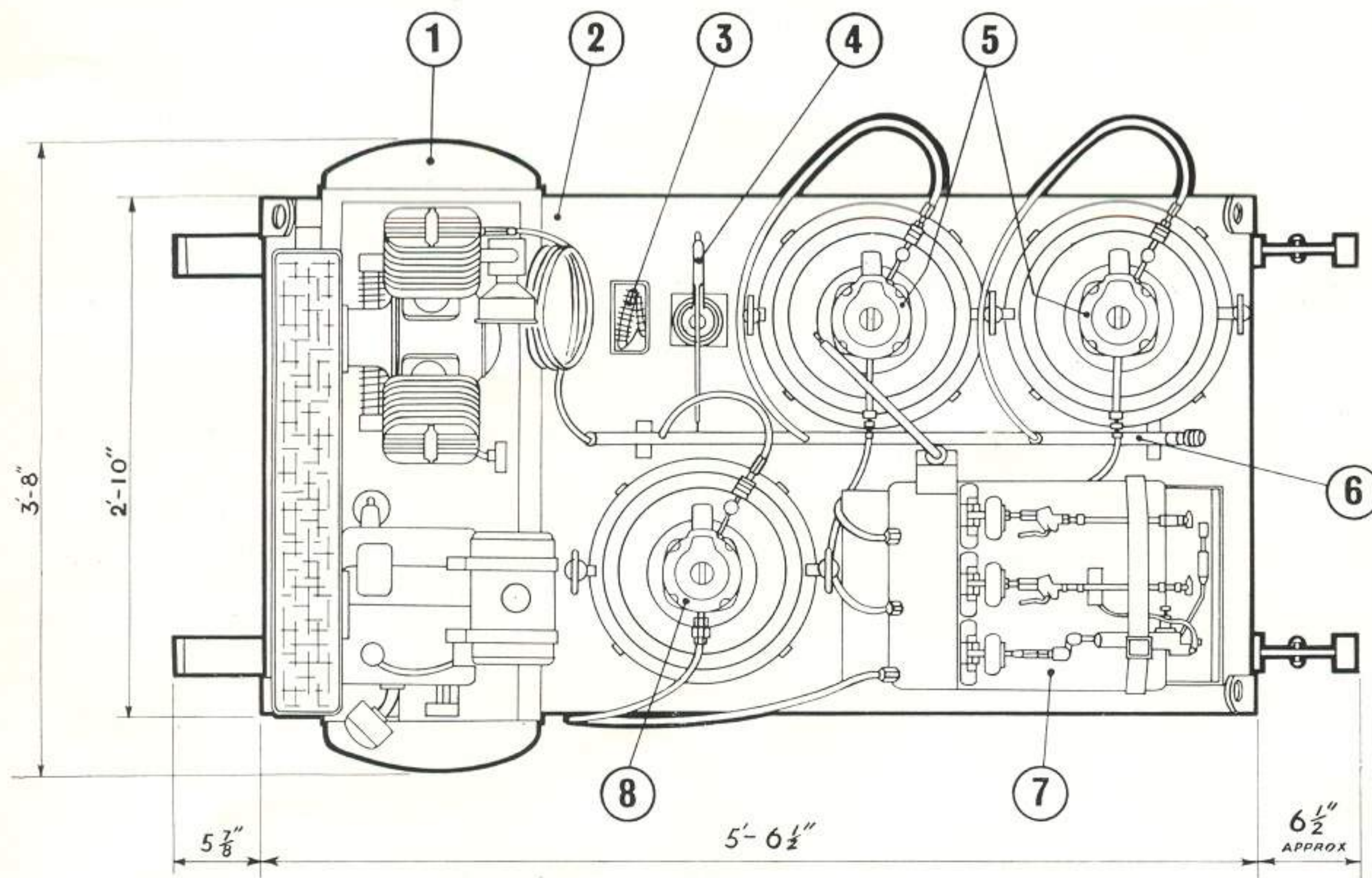
**TECALEMIT SPECIALISED SERVICING TO YOUR SITE**



# SPECIFICATION

## SHIPPING SPECIFICATION

WEIGHT	SM.8377	10 cwt. (508 kg.)	SIZE	112 cu. ft. (31 cu. m.)
	SM.8378	23 cwt. (1162 kg.)		322 cu. ft. (96 cu. m.)
DIMENSIONS	Length	5' 6½"	Width	3' 8"
		168 cm.		107 cm.
			Height	3' 9½"
				113 cm.



The Rover Company Limited is not responsible for the manufacture of approved equipment and/or bodywork, although they have closely examined specification and design. Matters concerning Sales (including Shipping, Delivery, etc.) Service or Warranty Claims are the responsibility of the manufacturer (whose name and address is given on this leaflet) or his agent. In cases of difficulty concerning approved equipment, the Special Projects Section of the Land-Rover Engineering Department is available to offer advice.

## SPECIFICATION AND KEY TO LAYOUT DRAWING

1. Twin cylinder, two-stage, air compressor driven by petrol engine. Compressor piston displacement 6.5 c.f.m., receiver capacity 28 gallons, maximum working pressure 150 p.s.i. General constructional features as described for larger unit in centre pages.

2. Steel baseplate, dimensions as on drawing.

3. Tyre inflator with Quick-fix connector at air inlet, 30-in. armoured inflation hose and snap action tyre valve connector.

4. Tecalemit Junior penetrating oil sprayer, for fixing to airline. Operating pressure 80-150 p.s.i. Capacity 1 pint.

5. Two TBL low-pressure lubricant pumps, each with drum cover and sleeve. General description as in centre pages.

6. Air supply pipe with take-off points for lubricant pumps, and Quick-fix coupler for tyre inflation, spraying and other pneumatic services.

7. Three self-reeling hose reels enclosed in single cabinet. Two with 25-ft oil hose, dispensing valve and non-drip nozzle. Hose end meters are available as optional extra. One with 25-ft grease hose, Z swivel, and control valve with nipple servicing adaptors. When not in use, the control valves are secured by canvas webbing straps.

8. One TBH high-pressure lubricant pump with drum lid and sleeve. General description as in centre pages.

9. 30-ft. air hose with Quick-fix coupler at one end and bayonet connector at other end.

10. Clamps for lubricant drums.

11. Telescopic derrick for supporting the pumps when lifted for drum replacement.

12. Clamping device.

Weight 9 cwt. nett.

T.S.U. for mounting on Land-Rover—SM 8377 Long Wheelbase Land-Rover T.S.U. complete with trailer—SM 8378 (see publication 154) Weight 15 cwt. nett.

## LAND-ROVER EXTRAS REQUIRED... NIL.