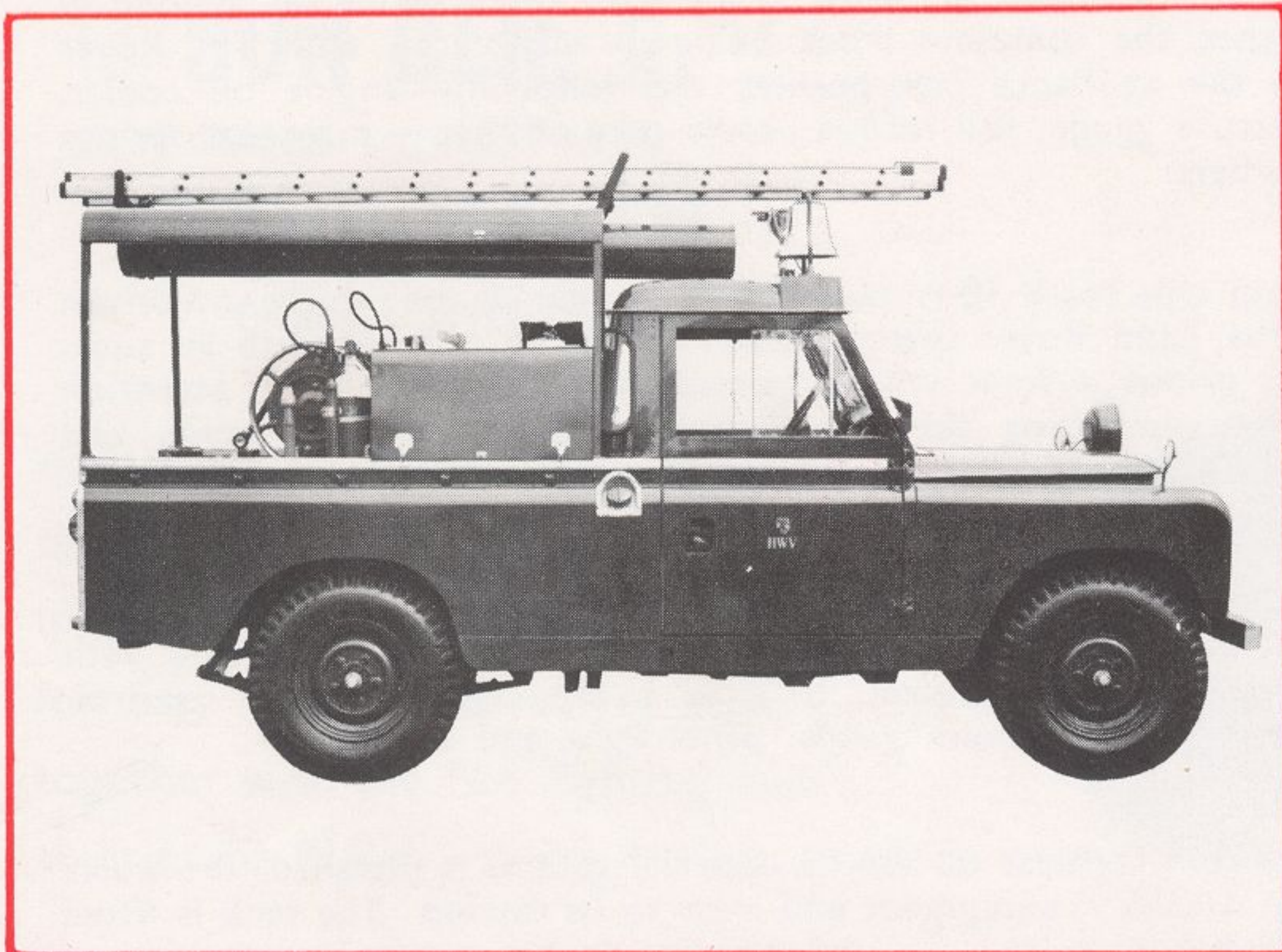


# SUN

**'PURPOSE DESIGNED'  
FIRE APPLIANCES**

As approved by  
The ROVER CO. LTD.

**LAND-  
ROVER**



## SUN BLR. 1.

based on 109" w/b

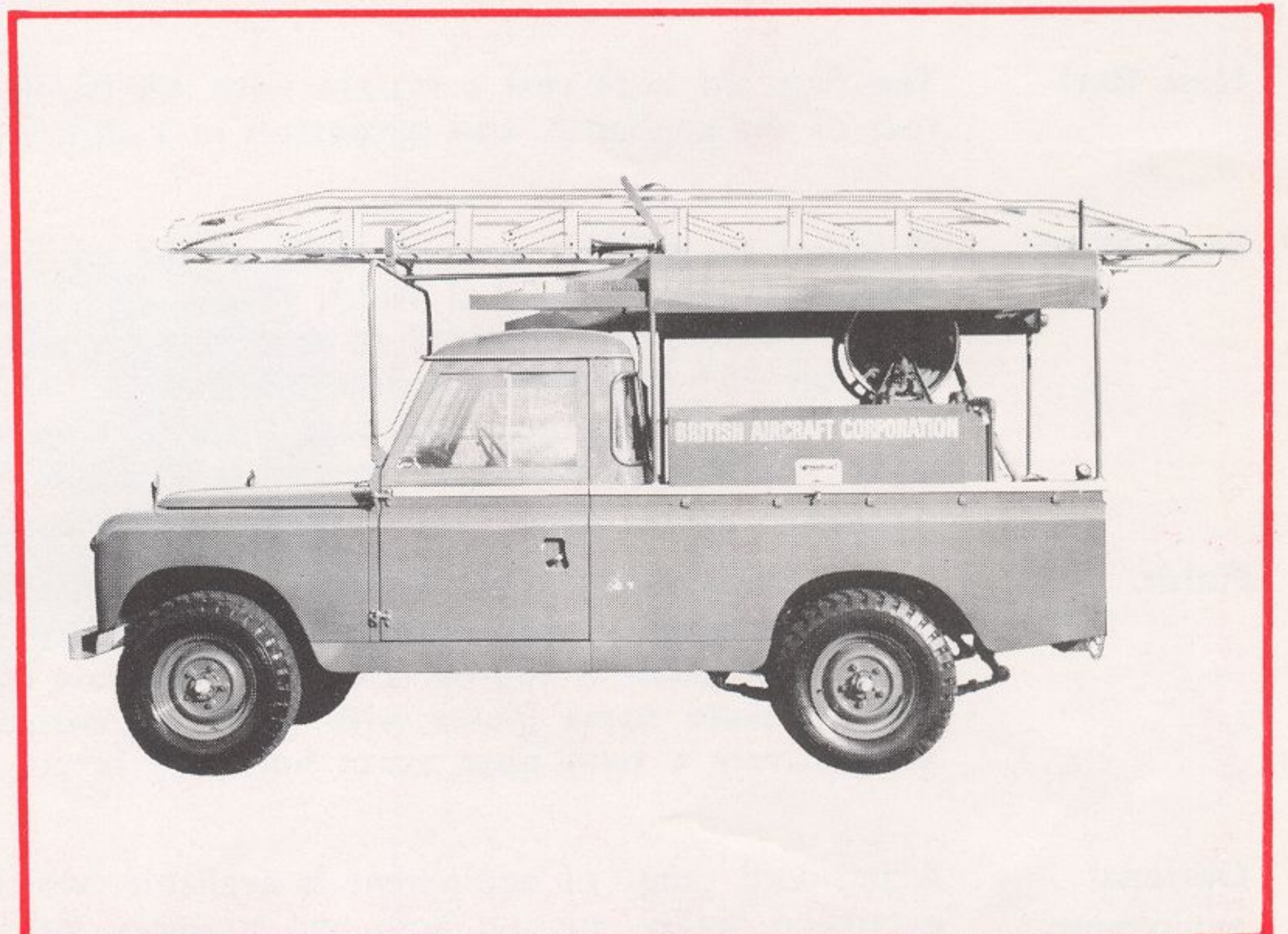
## LAND-ROVER

standard truck

Seating for crew of five. Water capacity 50/100 galls. SUN-HT Mk. IB. 500/600 g.p.m. pump or similar alternative

Extinguishing media- Water, Fog, Foam, C O<sub>2</sub>, or Vapourising liquids.

First Aid Hosereel.



SPECIFICATION OVERLEAF

**SUN ENGINEERING (RICHMOND) LTD.  
BROWELL'S LANE, FELTHAM, MIDDLESEX.**

PHONE: FELTHAM 6401

CABLES: SUNENG. HOUNSLOW

PDF by roby65to

# SUN 'PURPOSE DESIGNED' LAND-ROVER FIRE APPLIANCES type B L R I SPECIFICATION

- Chassis** 109" wheel base normal control Land Rover standard Truck with three seater cab is used in the construction of this appliance the complete truck being in accordance with The Rover Co's specification. In addition the appliance incorporates the following—engine oil cooler, water temperature and oil pressure gauge, full torque power take off, heavy duty rear springs and front and rear shock absorbers.
- Fire Pump** The Sun HT 500 g.p.m. fire pump type Mark 1B is mounted at the rear of the vehicle and driven through power take-off from the Land Rover prime mover. The pump is fitted with an automatic water ring closed circuit primer system, which operates with the minimum of attention and incorporates an interceptor preventing the interchange of water between pump and primer. Alternatively Coventry Climax or other pumps can be supplied.
- Control Panel** The control panel is fitted at the rear of the appliance incorporating a 4" R.T. suction inlet complete with blank cap and retaining chain, two screw down delivery outlets fitted with 2½" inst. female couplings, engine throttle control, tank to pump control, primer control, pressure gauge, compound pressure and vacuum gauge, panel light and switch.
- Water Tank** A galvanised steel water tank with a capacity of 50/100 imperial gallons is installed, the water capacity being dependent upon ancillary equipment and crew to be carried. The tank is fitted with a quick action filler and inspection cap. The delivery line to the pump incorporates an on/off valve to allow for pumping from static source or from hydrant.
- Hose Reel** The first aid hose reel complete with 120 ft./180 ft. of hose reel tubing is mounted at the rear of the appliance, and terminates in a chromium plated jet spray nozzle.
- Body Work** A locker accessible from both sides of the appliance allows for stowage of hose and ancillary equipment across the full width of the appliance, the locker being mounted over the water tank. Gallows are provided to carry a light alloy extension ladder with troughs for suction hose on each side of the ladder position.  
In addition to the three seat cab, seats for two crew members are provided at the rear of the body. Additional stowage capacity is available for equipment behind the crew seats.
- Finish.** Best quality materials and workmanship are used throughout. Exterior painted fire engine red or to customer's requirements. External metal fittings are chromium plated or protected against corrosion as appropriate. Sun "Purpose Design" provides accessibility for maintenance and adequate name plates with operating instructions. A chromium plated electric bell or alternatively a twin note alarm horn are fitted as standard equipment.
- Optional equipment.** A standard range of equipment is available, which includes a 10 ft. 6 in./18 ft. 9 in. light alloy extension ladder, suction hose and strainers, delivery hose, branch pipes, cab operated search-light, etc. Details and prices on request.

**Shipping details.** Approximate dimensions 14 ft. 6 in. long by 5 ft. 4 in. wide by 8 ft. 9 in. high approximate nett weight 4,150 lbs.

NOTE—As the policy of Sun Engineering (Richmond) Ltd. is one of continuous improvement, this specification is issued for guidance purposes only. We reserve the right to alter this specification without prior notice.

# SUN

## 'PURPOSE DESIGNED' FIRE APPLIANCES

As approved by  
The ROVER CO. LTD.

LAND-ROVER

### SUN BLR. 2. based on 109" w/b LAND-ROVER chassis with cab

maximum accommodation for ancillary equipment. Suitable for use in all climates. Functional design for easy access and quick action, together with the fire fighting capabilities of BLR.1.



Specific Designs  
in accordance  
with requirements.

SPECIFICATION OVERLEAF

**SUN ENGINEERING (RICHMOND) LTD.**  
**BROWELL'S LANE, FELTHAM, MIDDLESEX.**

PHONE: FELTHAM 6401

CABLES: SUNENG. HOUNSLOW

# SPECIFICATION

Employing the Land Rover chassis with cab, the complete appliance is designed to meet specific requirements.

The appliance shown in the upper photograph incorporates the fire fighting media and capabilities available with BLRI whilst offering the alternative standard production body detailed below.

The rear body is manufactured of mild steel framing, with light alloy panelling whilst constructed to be as light as possible it is fully robust to withstand the duty for which it is designed.

In addition to the three-seat cab, seats for two crew members are provided at the rear of the body. Two equipment lockers are provided on each side, the doors being fitted with sturdy chromium plated hinges and slam type locks with recessed handles. The lockers are equipped with interior lights operated automatically when the doors are opened, the doors being designed to minimise obstruction when fully open.

The rear body is fully enclosed, the top deck being panelled in heavy gauge alloy treadplate. The pump and control panel being readily accessible from the rear of the appliance. The lockers allow ample stowage for fire and rescue equipment such as breathing apparatus, pneumatic saws, delivery hose, rescue tools, etc.

Gallows are provided to carry a light alloy extension ladder with troughs for suction hose on each side of the ladder position. Two quarter bumpers are fitted to give protection to the rear of the vehicle.

NOTE—As the policy of Sun Engineering (Richmond) Ltd. is one of continuous improvement, this specification is issued for guidance purposes only. We reserve the right to alter this specification without prior notice.

“The Rover Company Limited is not responsible for the manufacture of approved equipment and/or bodywork, although they have closely examined specification and design. Matters concerning Sales (including Shipping, Delivery, etc.) Service or Warranty Claims are the responsibility of the manufacturer (whose name and address is given on this leaflet) or his agent. In cases of difficulty concerning approved equipment, the Special Projects Section of the Land-Rover Engineering Department is available to offer advice.”