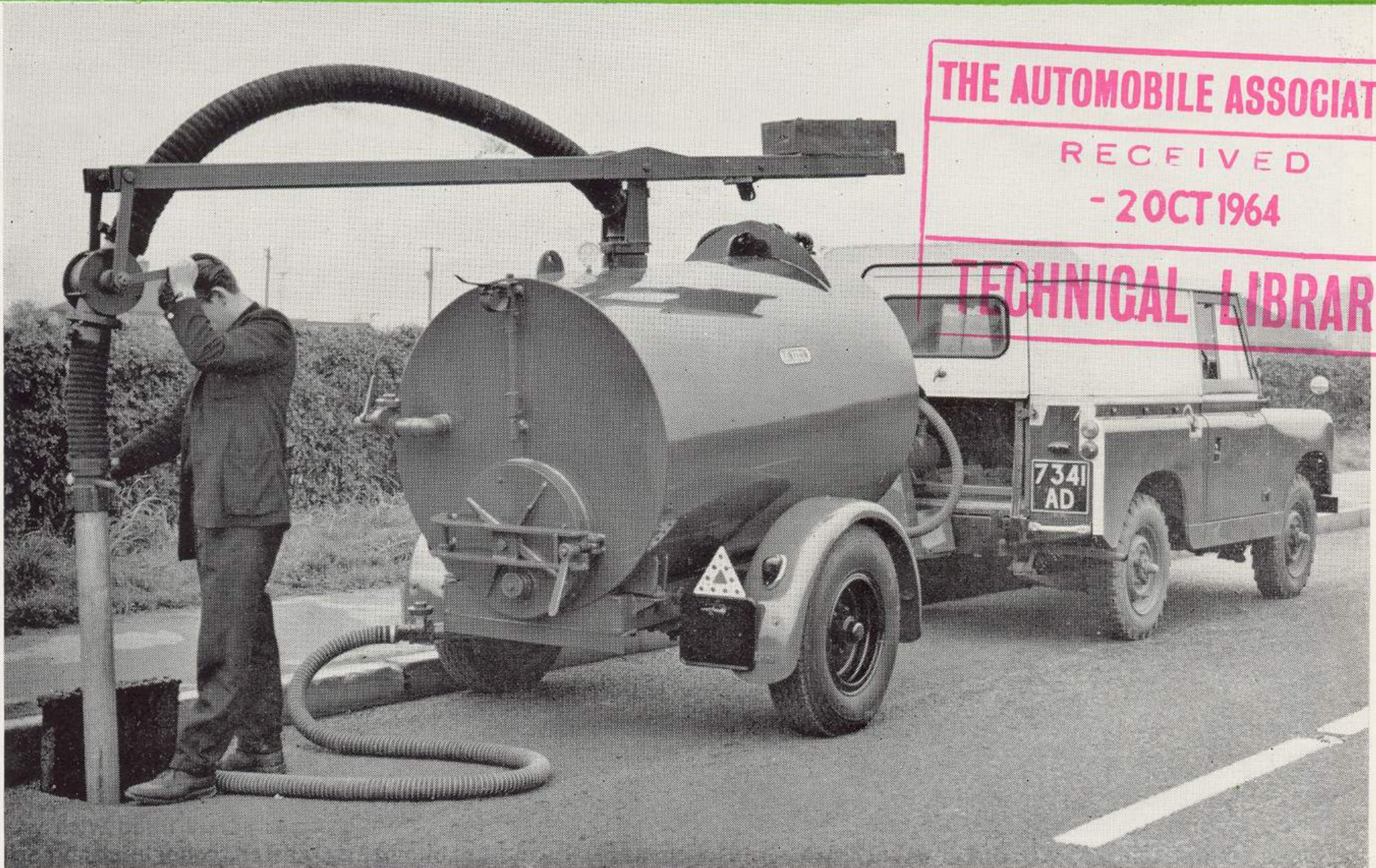


The "TINTERN"

TRAILER TYPE

Street Gully Emptier

As approved by the Rover Co
Ltd for use with the



The "Tintern" Trailer Type **Street Gully Emptier** has a total capacity of 420 gallons (1,909 litres) divided into two compartments—a water supply tank of 120 gallons (546 litres) and the main tank of 300 gallons (1,363 litres) into which the material is drawn from the gully. The division of the tank is constructed to provide even load distribution at all stages of the operation, both on road wheels and drawbar loading, provides a flat floor which slopes steeply towards the 20" (50.8 cm.) outlet door to facilitate easy emptying.

A 4" (10.16 centimetres) suction pipe enters the tank by swivel connection and is supported by a beam weighted at one end to form a balance of the suction pipe attached to the opposite end, which can be rotated to operate at either side or rear of the machine, has a vertical movement of 6' (2 metres) and can completely clear gullies of 5' (1.66 metres) depth.

Sole Concessionaires:

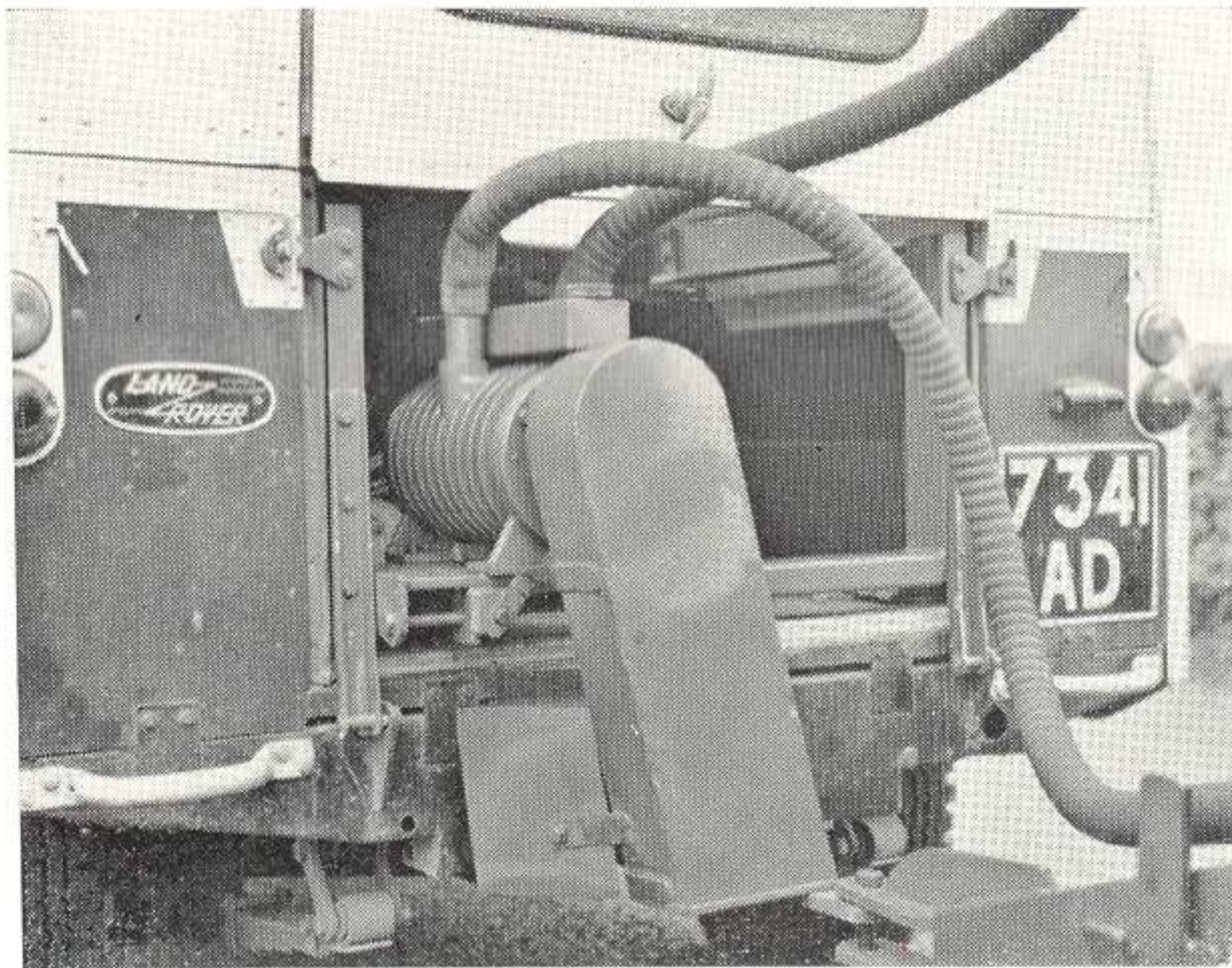
William Bunce & Son
ENGINEERS

ASHBURY : SWINDON : WILTS
TELEPHONE ASHBURY 212/3

MANUFACTURERS : ALLAN FULLER LTD., CHEPSTOW, MON.

CHEPSTOW 2145

SPECIFICATIONS AND DETAILS



EXTRAS FOR STREET GULLY EMPTIER

Side Trays. 8' lengths \times 3" dia. (2.66 metres \times 7.62 cm.) suction hose fitted with round thread coupling.

Rear Platform and hand rail.

<i>Classification</i>	<i>Street Gully Emptier</i>
Total Tank Capacity.	420 galls. (1,909 litres)
Sludge Compartment.	300 galls. (1,363 litres)
Water Compartment.	120 galls. (546 litres)
Suction Pipe.	4" dia. (10.16 centimetres)
Wheel Equipment.	750 \times 16 \times 8ply. (19 cm. \times 40.64 cm. \times 8 ply rating)
Road Springs.	"Flexitor" Rubber Suspension
Wheel Width.	66" (1.676 meters)
Unladen Weight.	21 cwt. (1,067 K.g.m.)
Maximum Laden Weight.	56 cwt. (2,845 K.g.m.)
Drawbar Loading.	6 cwt. (loaded). (305 K.g.m.)
Maximum Lift below ground level.	16' with suction hose extension (4.8768 metres)
Brakes.	10" Girling (25.4 cm.)
Capacity of Pump	108 cu.ft. min. (3.059 cu. metres per min.)
Tank Interior.	Bitumen coated.
Standard Colour.	Green and Red (or choice).

The purpose of the separate water tank is to provide water for flushing down the gully and to moisten the sediment during clearing operation. This ensures speedy and efficient emptying of the gully. By the movement of a lever, air can be extracted from either tank separately. The water tank can be filled in a few minutes under vacuum system by placing water hose into a water supply tank, brook or pond. A float-operated shut-off valve is arranged to prevent over filling and so avoid liquid passing to the air exhauster.

A draw-off valve is arranged at the rear of the main tank so that surplus water can be drawn from this compartment to replenish the supply in the water tank. This enables operations to continue over a longer period before it is found necessary to empty the equipment. The main tank can also be partly filled with water before commencing operations thus increasing the water capacity and enabling the transfer to begin at an earlier stage. A water gauge glass is positioned to provide visual water level from which the Operator decides when the transfer of water can be carried out.

The air exhauster has a free-air displacement of 108 cu. ft. (3.059 cu. metres) per minute at 1,450 r.p.m. is positioned on special tail gate mounting and driven from rear P.T.O. shaft as illustrated.

An efficient filter fitted in the main vacuum line effectively prevents solids or liquids passing from the main tank to the air exhauster.

The Equipment is fitted with 10" (25.4 cm.) overrun brakes with parking lever and provisions to couple cab operated trailer brake control, mudguards, rear lamps embodying stop, tail and reflectors, number plate with illuminating lamp and trailer plate to comply with the Road Traffic Act are also fitted.

The Rover Company are not responsible for the manufacture of approved equipment or body work, although they have closely examined specifications and designs.

All matters concerning sales (including shipping, delivery, etc.), Sales or warranty claims are the responsibility of the Manufacturers (whose name and address is given on this leaflet) or his Agents.

In cases of difficulty concerning approved equipment, a special project section of the Land Rover Engineering Department is available to offer advice.

LAND-ROVER EXTRAS REQUIRED :

Rear P.T.O. 109" (276.86 cm.) Part No. 501680

88" (223.52 cm.) " " 241706

Trailer Plug and Socket Assembly Part No. 502501

Rear Tow Plate Assembly Part No. 501683

Hand Throttle for Petrol Engine Models Part No. 503033