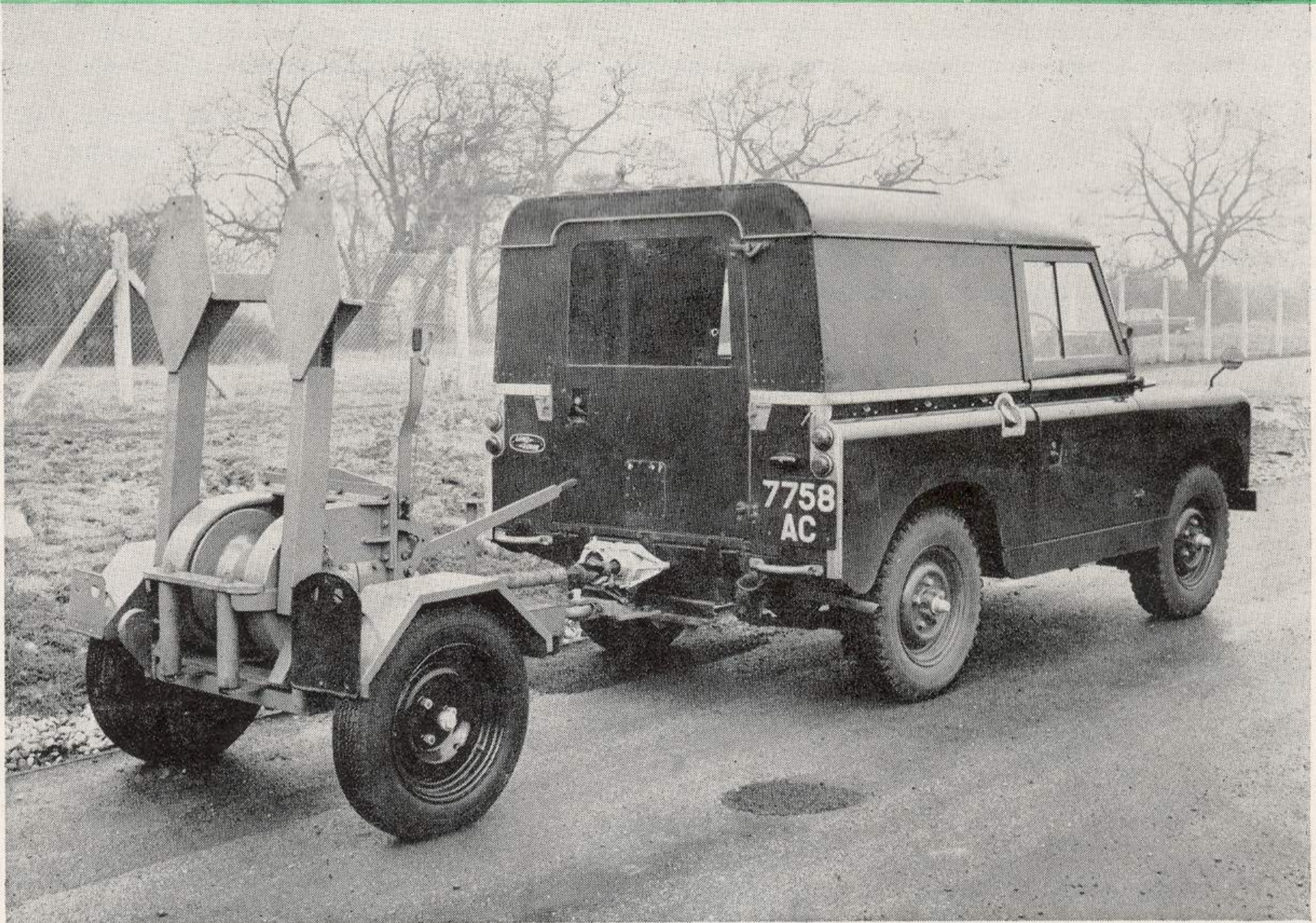


THE HESFORD TRAILER WINCH

As approved by the Rover
Co Ltd for use with the...

LAND
ROVER



*The Hesford Trailer Winch attached to the Land Rover
with the anchor in the transportation position.*

A quickly attached winch that will pull up to 10,000 lbs. and carry over 250 feet of $\frac{5}{8}$ " diameter wire rope. Enables your Land Rover to be used for operations requiring a powerful pull.

C. M. HESFORD & CO. LTD.

ORMSKIRK · LANCS · ENGLAND

Telegrams : HESFORD, ORMSKIRK

Telephone : Ormskirk 2 5 6 4

HESFORD TRAILER WINCH

SPECIFICATION AND DETAILS

The Hesford Trailer Winch can be quickly attached and transported behind the Land Rover and used for tree pulling, uprooting, hedges, demolition, vehicle recovery, truck haulage and a multitude of jobs which require a powerful pull.

A speed reducing gearbox on the Winch is driven by a universal drive shaft from the rear take off unit on the Land Rover. This gearbox incorporates a combination of worm and spur gearing. Manual operation of a lever engages a large cone clutch to put the rope drum in motion. Another lever operates a powerful internal expanding brake to control the rope drum when "paying out" the cable.

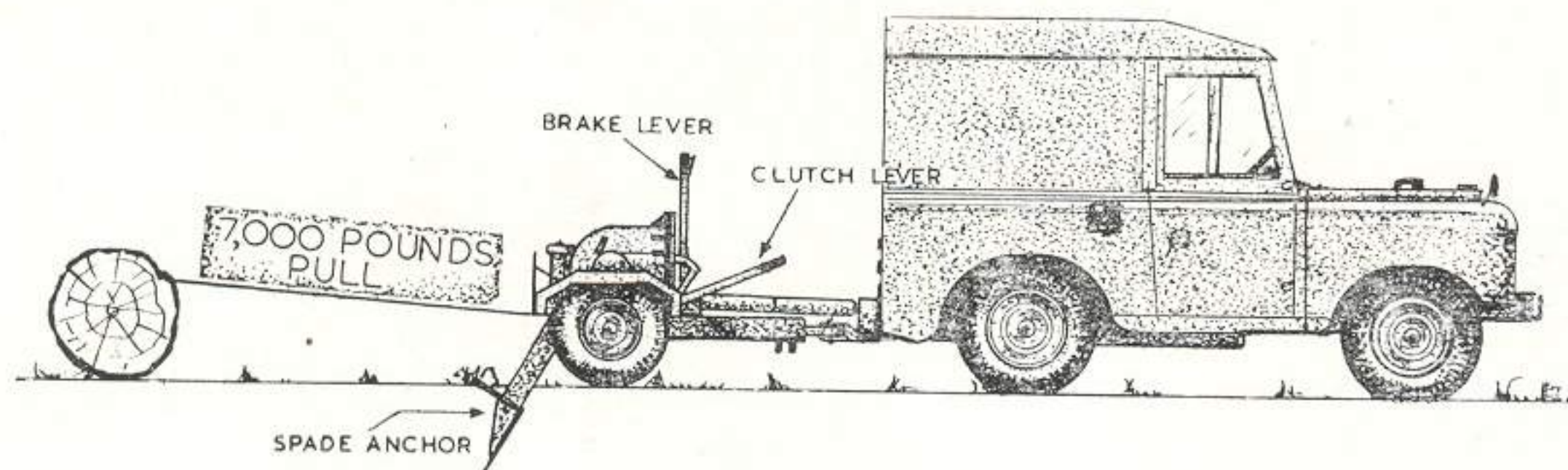
The trailer is fitted with pneumatic tyers and over-run brakes. The wheel hubs are mounted on roller bearings. Mudguards are supplied also a blank number plate. Rear lights and flasher are not supplied but provision is made for their mounting.

The Hesford Trailer Winch will pull up to 7,000 lbs. with the rope on the bare drum and using the permanently fixed rear spade anchor. With a combination of the latter and an additional screw type anchor a pull of approximately 10,000 lbs. can be obtained. Ropes can be supplied at extra cost. The recommended size for use with this Winch is 120 ft. x $\frac{5}{8}$ ins. diameter fitted with a swivel hook, but ropes up to 250 ft. long can be accommodated.

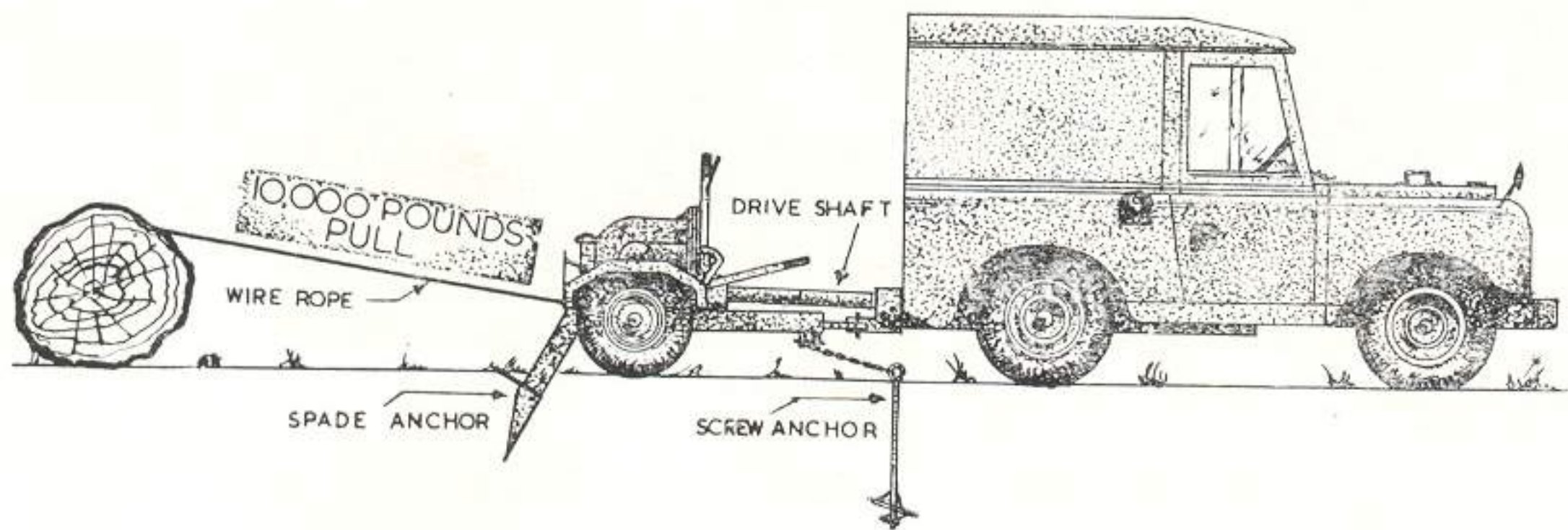
SHIPPING SPECIFICATION.

Crate containing one Winch size 72 ins. x 60 ins. x 44 ins.

Approx. Gross weight 1,700 pounds.



USING ONLY THE SPADE ANCHOR, THE HESFORD TRAILER WINCH WILL PULL 7,000 POUNDS.



WHEN THE SCREW ANCHOR IS USED IN ADDITION THE WINCH WILL PULL UP TO 10,000 POUNDS.

WARRANTY.

We undertake to replace or repair parts which prove faulty in material or workmanship within six months. Such parts must be returned to us carriage paid, for inspection and approval. We do not accept any responsibility for consequential loss or damage, charges or implied guarantee, warranty or conditions (statutory or otherwise) beyond this. This warranty does not cover for tyres, ropes or any parts not manufactured by ourselves. No dealer has authority to alter, add to or waive the above warranty.

Land Rover extras required :

**REAR POWER TAKE OFF WITH EXTENDED
TOWING PLATE AND TOWING JAW.**