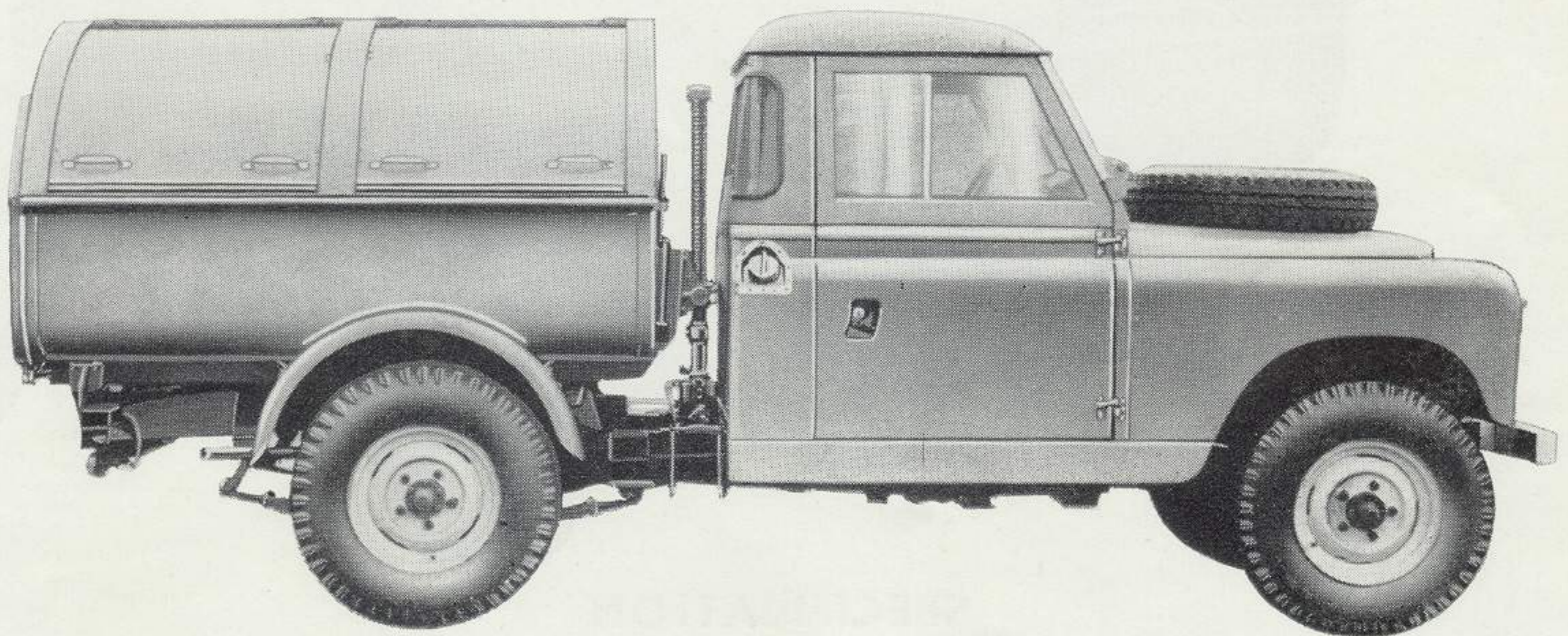


# EAGLE

## 3 CUB. YD. REFUSE BODY

As approved by the Rover Co.  
Ltd. for use with the . . . . .



AN ALL STEEL TIPPING BODY  
OF LARGE CAPACITY  
SPECIALLY DESIGNED  
FOR

THE HYGIENIC COLLECTION OF REFUSE



### THE EAGLE ENGINEERING CO. LTD.

P.O. BOX No. 43

EAGLE WORKS • WARWICK • ENGLAND

Telephone 42131

MANUFACTURERS OF ALL TYPES OF MUNICIPAL BODIES, INCLUDING REFUSE COLLECTORS, GULLEY AND CESSPIT EMPTIERS, TOWER WAGONS, ETC. ALSO MANUFACTURERS OF TRAILERS AND SEMI TRAILERS.

# SPECIFICATION & DETAILS

**3 CUB. YDS.  
REFUSE COLLECTION  
BODY**

## DETAILS

Body : 6' 0" long x 5' 0" wide x 1' 7½" deep.  
4 sliding covers, 1' 9" camber.  
Overall dimensions : 15' 3" long.  
5' 4" wide, 6' 2" high.  
45° angle of tip.  
Loading line 4' 4" U/L.  
Unladen Weight 35 Cwts.



## SPECIFICATION

Body constructed of steel sheets, all joints electrically welded, and built on a sturdy steel sub-frame. The sides have radius corners for clean discharge and the wheel arches are gently radiused.

A heavy rubber bumper bar is fitted along top of sides to prevent bin damage and is easily replaceable.

Taildoor is top hinged and secured by cam type locking bar. Covers are "Easi-Slide" clip type in two sections each side. Tipping gear is hand operated telescopic screw type and has two winding handles.

Mudwings are fitted over rear wheels.

Finish : painted in standard Land Rover Grey.

## OPTIONAL EXTRAS

Taildoor can be fitted with a rubber seal and made watertight. Vehicle can be finish painted to customer's own requirements at extra cost.

Order chassis cab specification under No. S2006 109" Diesel. or No. S2005 109" Petrol.

## LAND ROVER EXTRAS REQUIRED—

SPARE WHEEL CARRIER ON BONNET HEAVY DUTY SUSPENSION