

# The **MARTIN WALTER** **DORMOBILE CARAVAN**



As approved by the Rover Co., Ltd.



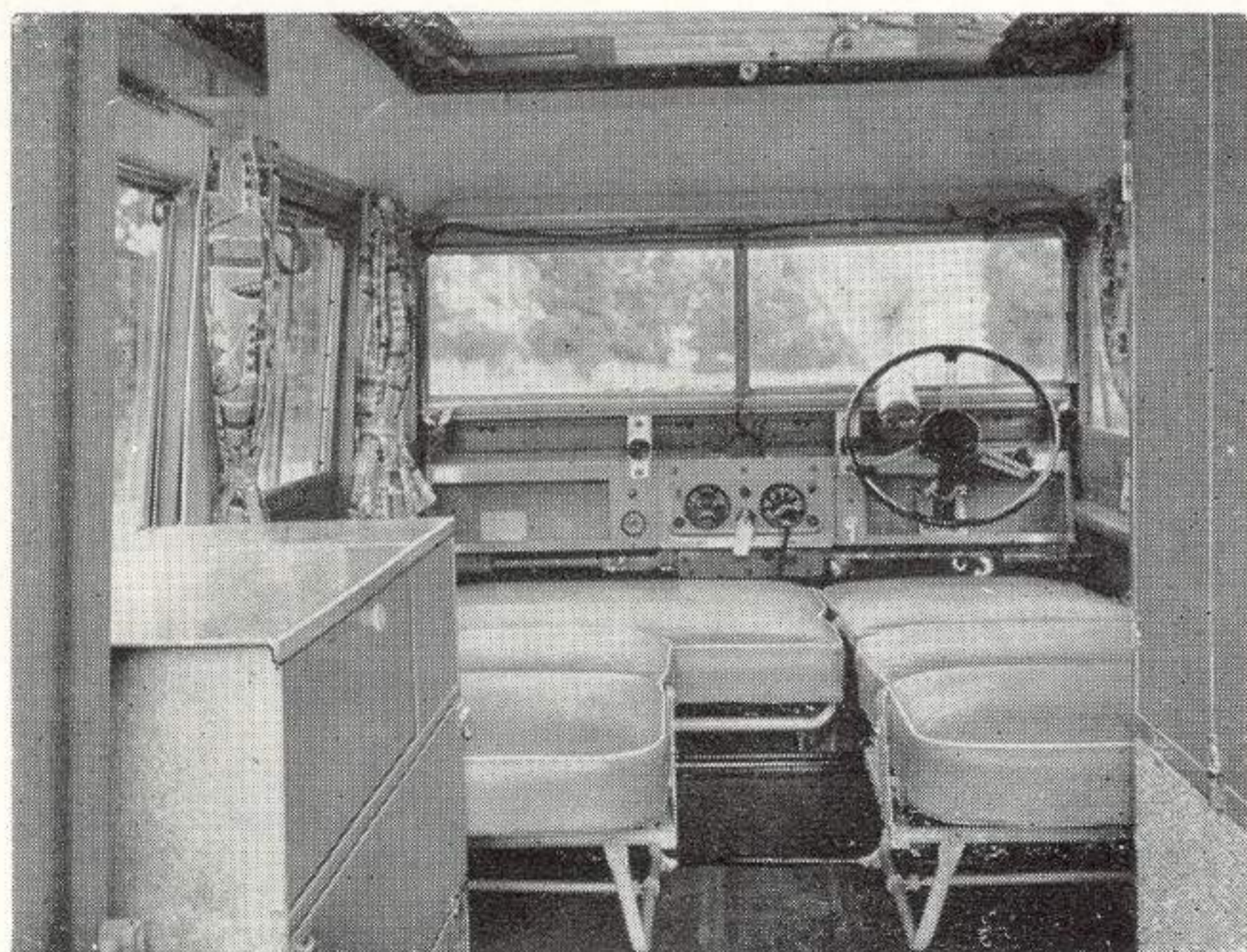
The DORMOBILE Caravan Conversion of the long Land-Rover Station Wagon is designed in complete accord with the rugged, go anywhere, character of this famous vehicle.

All interior fittings are constructed in stove enamelled steel.

The patent DORMOBILE roof panel is formed in strong but light fibreglass, resistant to corrosion of all kinds, with the canopy portion in special double coated P.V.C. material, proved storm and weatherproof, and non-rotting, in actual use under all conditions.

The cleverly designed and fully patented features of the DORMOBILE Caravan have already been fully tested and proved in the hands of many thousands of users, at home and overseas. Their application to the long Land-Rover Station Wagon result in a vehicle of unparalleled versatility and toughness, specially adapted for comfortable touring for four adults in any part of the world.

The added advantage of provision for sleeping, cooking, washing, meals, water supply, and storage accommodation for clothing and bedding, render it completely independent of fixed routes or locations.



The compact units of the Caravan fittings are located in the rear of the vehicle, rendering access to the seats or beds easy and convenient.

When two persons only are carried, the two rear seats may be folded close to the body sides, leaving additional clear, unobstructed floor space available for extra baggage or equipment.

With the roof in the raised position, full headroom is provided in the interior of the vehicle, giving maximum air space and ventilation.

The Land-Rover DORMOBILE Caravan will have special appeal to long distance travellers, expeditions, surveyors, contractors, game wardens, civil engineers, archaeologists, geologists, Government and military services, and a host of other users at home and overseas.

Conversion by

Est. 1773  
**Martin**  
**Walter Ltd**

**UTILECON WORKS** •  
**FOLKESTONE • ENGLAND**  
TELEPHONE 51844

# LAND-ROVER DORMOBILE CARAVAN

## SPECIFICATION AND DETAILS



### DIMENSIONS

Exterior		Metres	
Overall length	175"	4.45	
Overall height (roof down)	85"	2.16	
Overall width	64"	1.62	
Wheelbase	109"	2.77	
Track	51½"	1.31	
Interior			
Height—roof up	92"	2.34	
Height—roof down	53"	1.35	
Weights		Kilos	
Kerb weight	1 ton 16 cwts. 2 qrs. 21 lbs.	1864	
Shipping weight	1 ,, 15 ,, 1 ,, 11 ,,	1796	
Taxation weight	1 ,, 14 ,, 3 ,, 0 ,,	1765	

**GUARANTEE:** The same warranty and guarantee is given with the Conversions as that given by the makers of the van converted or chassis built upon and expressly excludes any other conditions or warranty implied by Common Law, by Statute or otherwise. Specification and prices are subject to change without notice.

The Land-Rover DORMOBILE Caravan is the joint product of the Rover Co. Ltd., Solihull and Martin Walter Ltd., Folkestone, England.

### BRIEF SPECIFICATION

#### SEATING (patented design)

'DORMATIC' seating for three in front, two to the rear, all facing forward. Seats are formed with special spring laced bases with foam overlay and washable P.V.C. trim, giving maximum comfort.

Seats fold instantly to form two single, or one double bed, 6' in length.

Rear seats fold close to body sides, giving clear floor space when desired.

In 4-berth model, two folding upper bunks, 6' in length are provided.

#### ELEVATING ROOF (patented design).

Translucent fibreglass roof panel with canopy of rotproof P.V.C. material. Easy spring-assisted operation, giving interior height of 7' 8" when raised, providing maximum air space and ventilation. Large panoramic roof windows and opening vent panel.

#### COOKING

Double burner Calor gas stove with grill, and provision for two gas containers under floor. Primus stove optional extra.

#### WASHING

A plastic sink, with exterior drainage, is fitted beside cooker.

#### MEALS

An easily erected table is provided.

#### WATER

Two hygienic, translucent water containers are provided, one 5-gallon with tap, and one 2-gallon with spout for easy filling.

#### STORAGE

A roomy wardrobe is fitted on the offside.

Ventilated cupboards are provided below the cooker and sink unit.

Locker under driver's seat for additional storage.

#### CABINET WORK

Construction of stove enamelled steel.

#### COLOURS

**Exterior:** Standard Land-Rover colours: Bronze Green, Light Green, Mid Grey, Marine Blue.

**Interior Upholstery:** Land-Rover Grey P.V.C.

**Roof Canopy:** Green/White or Red/White candy stripe.

#### OPTIONAL EXTRAS

A wide range of options are available, including camping items and a chemical closet. For particulars see separate price list from Martin Walter Ltd.