

PLUMETT

APPROVED BY THE ROVER CO. LTD.
for use with the



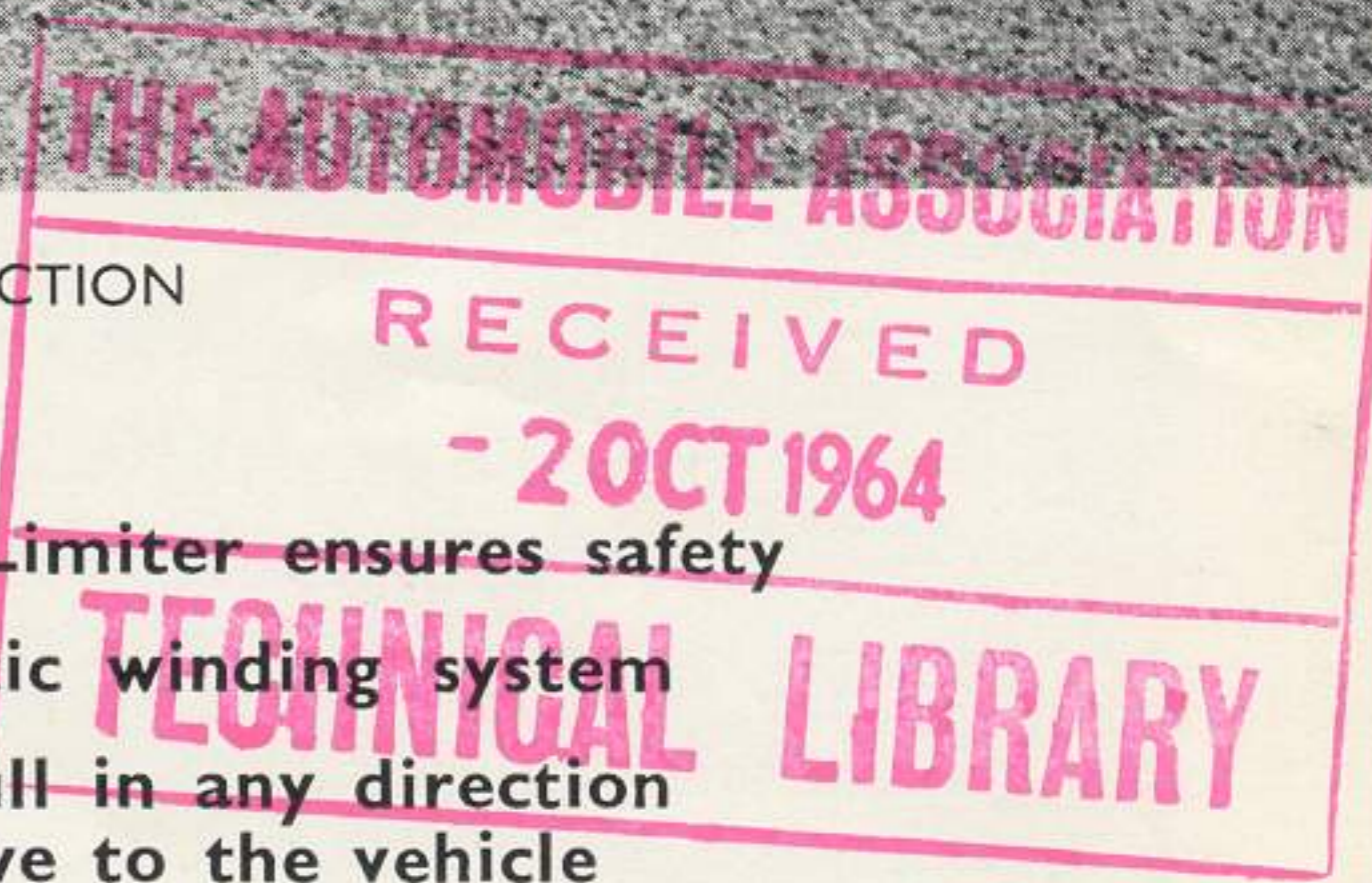
AUTO-CAPSTAN WINCH

for various winching operations and for self-recovery



VEHICLE EQUIPPED FOR ELECTRIC LINE CONSTRUCTION

- * 750' of cable stored on drum
 - * Wide range of cable speeds
 - * Capstan action — pull and speed independent of cable length
 - * Torque Limiter ensures safety
 - * Automatic winding system
 - * Cable pull in any direction relative to the vehicle
- * Land-Rover remains free for any other use



Manufactured by :

PLUMETTAZ LTD., BEX (Switzerland)

Sole Distributors :

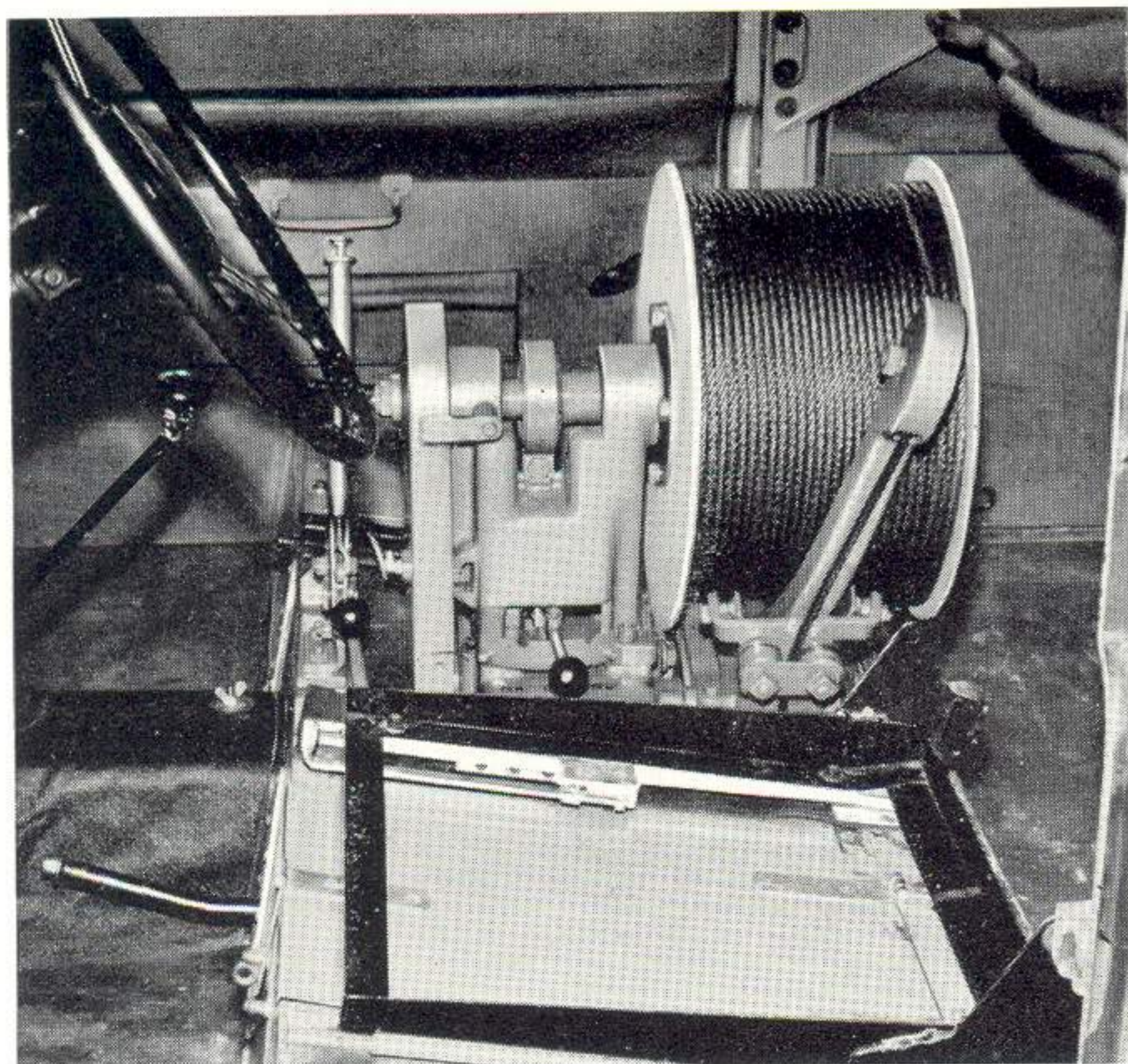
FULLER, LUCAS & CO., LTD., CROWBOROUGH, SUSSEX, ENGLAND

Phone : Crowborough 917

Cables : Lucas, Crowborough

PLUMETT

AUTO-CAPSTAN WINCH



SIDE VIEW (SEATS REMOVED)

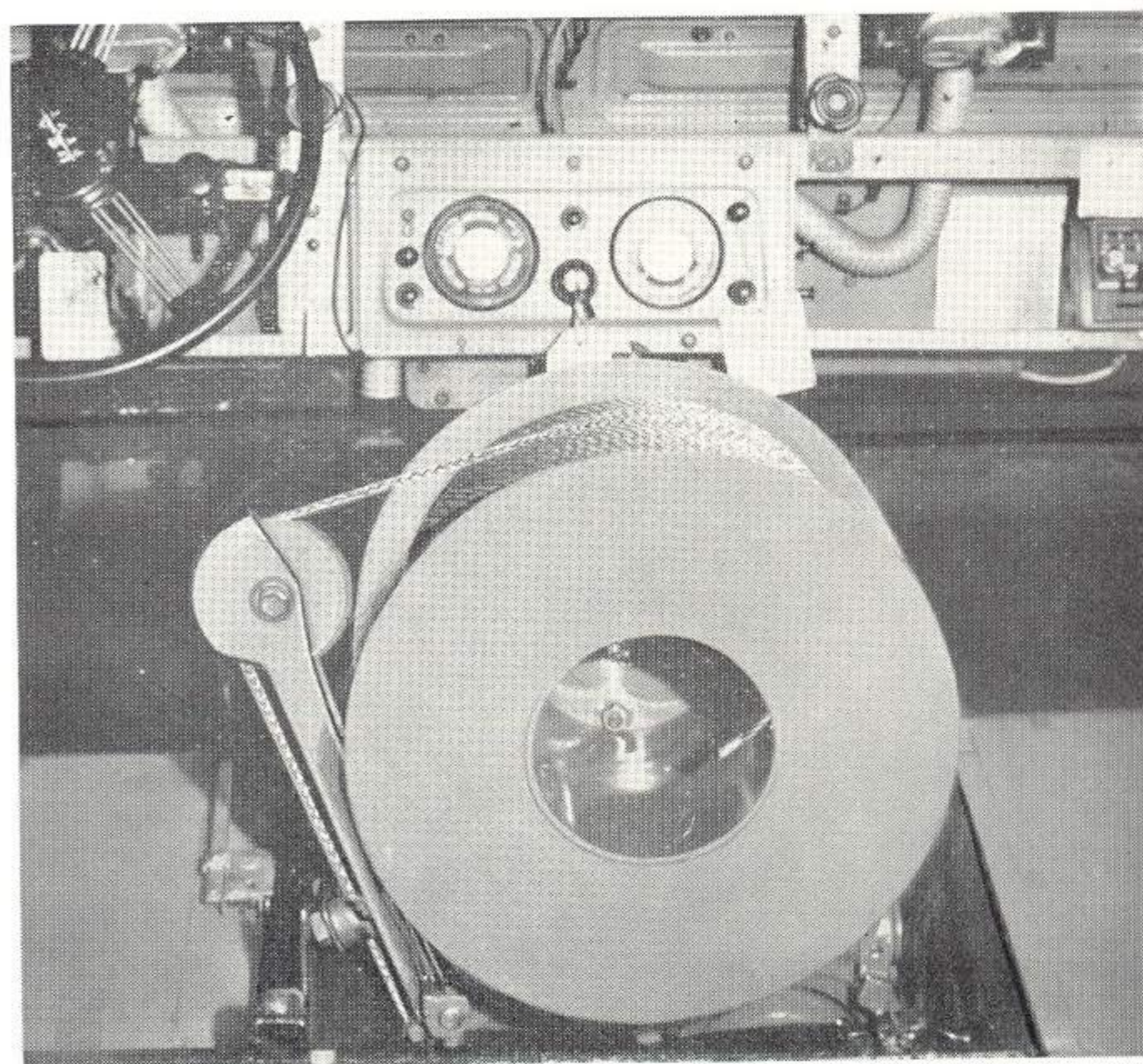
unwinding of the cable, prevents its buckling, crossing or fouling, and reduces its wear and tear.

The cable is paid out underneath the chassis through a pulley which can pivot over a full circle ; thus, **pulling is possible in any direction** relative to the position of the Land-Rover.

When lowering a load, the engine brake should be used to avoid overheating and wear of the safety hand-brake of the winch. Should the load be held up by some obstacle, the unwinding of the cable stops automatically, though the capstan may continue to turn.

To avoid undue stress on the vehicle chassis, the winch should be anchored whenever pulling heavy weights. For this purpose the pulley housing is provided with an eye for the hook of an anchor cable. On very steep slopes, which the Land-Rover cannot negotiate even in low gear ratio 4 wheel drive, it can be hauled up or lowered by means of its own PLUMETT Capstan Winch.

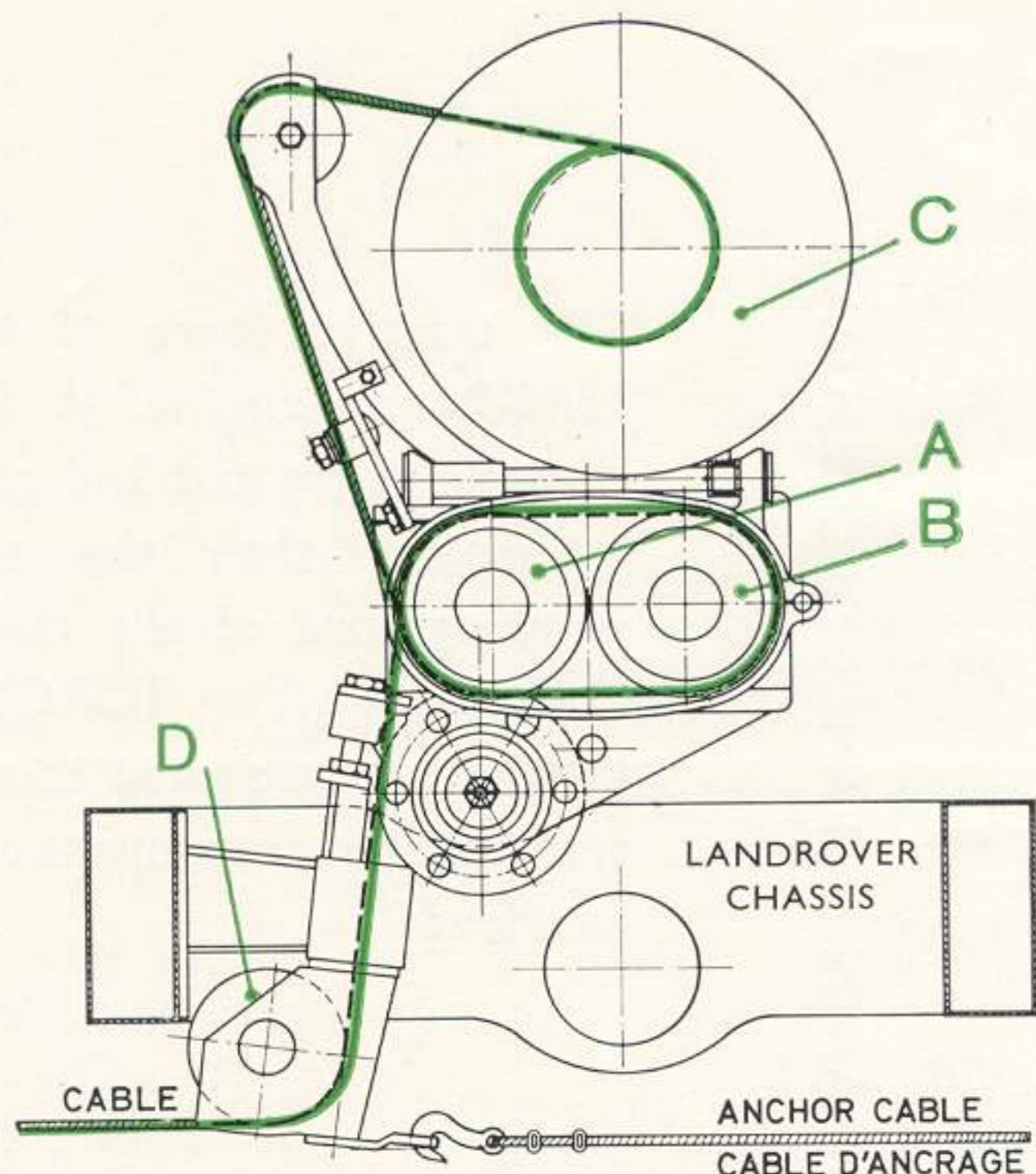
The PLUMETT Capstan Winch is mounted between the seats of the driver and the passenger, and is driven from the Land-Rover's centre power take-off. **Cable speeds** are controlled the same way as the vehicle speeds, viz. by the gear lever, and by the clutch and accelerator pedals of the Land-Rover. **Cable speed and pull** are independent of the length of cable wound on the drum. A multi-groove pulley system, acting as a capstan, transmits the engine power to the cable. **A torque limiter** is built in between the power take-off and the capstan to prevent overloading. The cable drum is driven through an adjustable friction clutch, so set as to impart just enough tension to the cable for a firm grip on the capstan. This tension between the drum and the capstan is maintained **automatically** by a free-wheel/brake system, which controls the regular winding and



BACK VIEW (SEATS REMOVED)

PLUMETT

AUTO-CAPSTAN WINCH



Working principle of the PLUMETT Auto-Capstan Winch.

The power of the motor is transmitted to the cable by the multiple-groove pulley block A and B. The drum C, driven by a friction clutch, ensures adhesion and stores the cable passed by the multiple-groove pulley block. The pulley D can turn a full 360°, allowing traction in any direction.

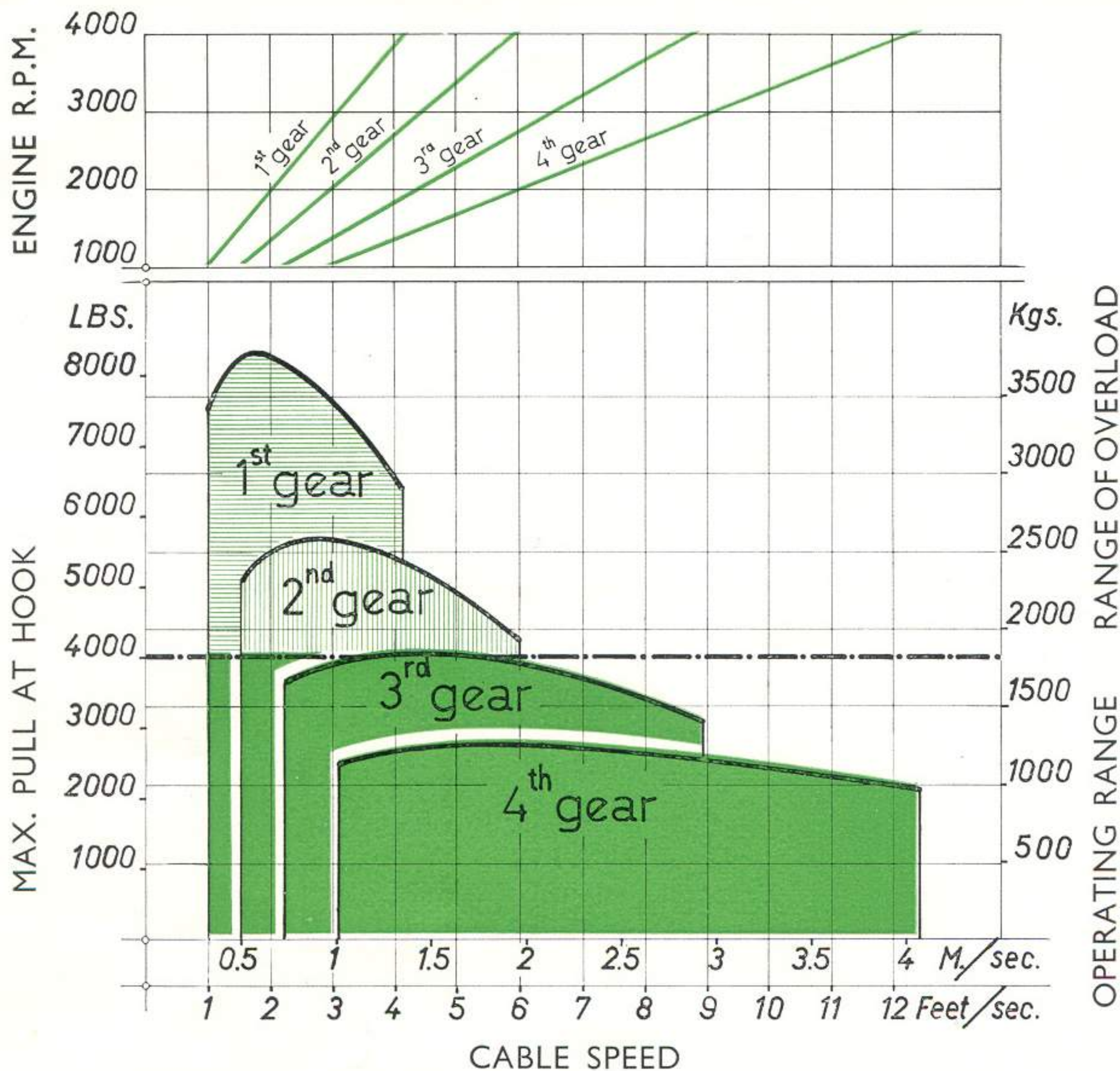


TIMBER HAULING IN THE FOREST



LAND-ROVER HOISTING ITSELF WITH THE WINCH CABLE

SPECIFICATION



The tractive force of the Land-Rover engine at full throttle in 1st and 2nd gear is greater than the safe working load of the cable. Therefore a TORQUE LIMITER is provided in the transmission to prevent any overload.

Max. pull at hook and engine r.p.m. in relation to the cable speed. (Petrol engine, normal control chassis).

TECHNICAL DATA

Maximum pull at hook	4,000 lbs.	(1,800 kgs.)
Maximum cable length	{ 7 mm. dia. { 8 mm. ($\frac{5}{16}$ ") dia.	330 yards 250 yards	(300 m.) (230 m.)
Cable breaking load	{ 7 mm. dia. { 8 mm. ($\frac{5}{16}$ ") dia.	7,800 lbs. 9,200 lbs.	(3,500 kgs.) (4,200 kgs.)
Weight of PLUMETT Auto-Capstan Winch (without the cable)	209 lbs.	(95 kg.)
Weight of 750 feet of $\frac{5}{16}$ " dia. cable	144 lbs.	(65 kg.)
Weight of 990 feet of 7 mm. dia. cable	119 lbs.	(54 kg.)

Shipping Specification : Case Dimensions 2' x 2' x 2' (60 x 60 x 60 cm.)
 Gross weight (including cable) 4 cwt. 16 lbs. (211 kg.)
 Nett weight (including cable) 3 cwt. 18 lbs. (161 kg.)

The Rover Company Limited is not responsible for the manufacture of approved equipment and/or bodywork, although they have closely examined specification and design. Matters concerning Sales (including Shipping, Delivery, etc.), Service or Warranty Claims are the responsibility of the manufacturer (whose name and address is given on this leaflet) or his agent. In cases of difficulty concerning approved equipment, the Special Projects Section of the Land-Rover Engineering Department is available to offer advice.

LAND-ROVER EXTRAS REQUIRED: NIL