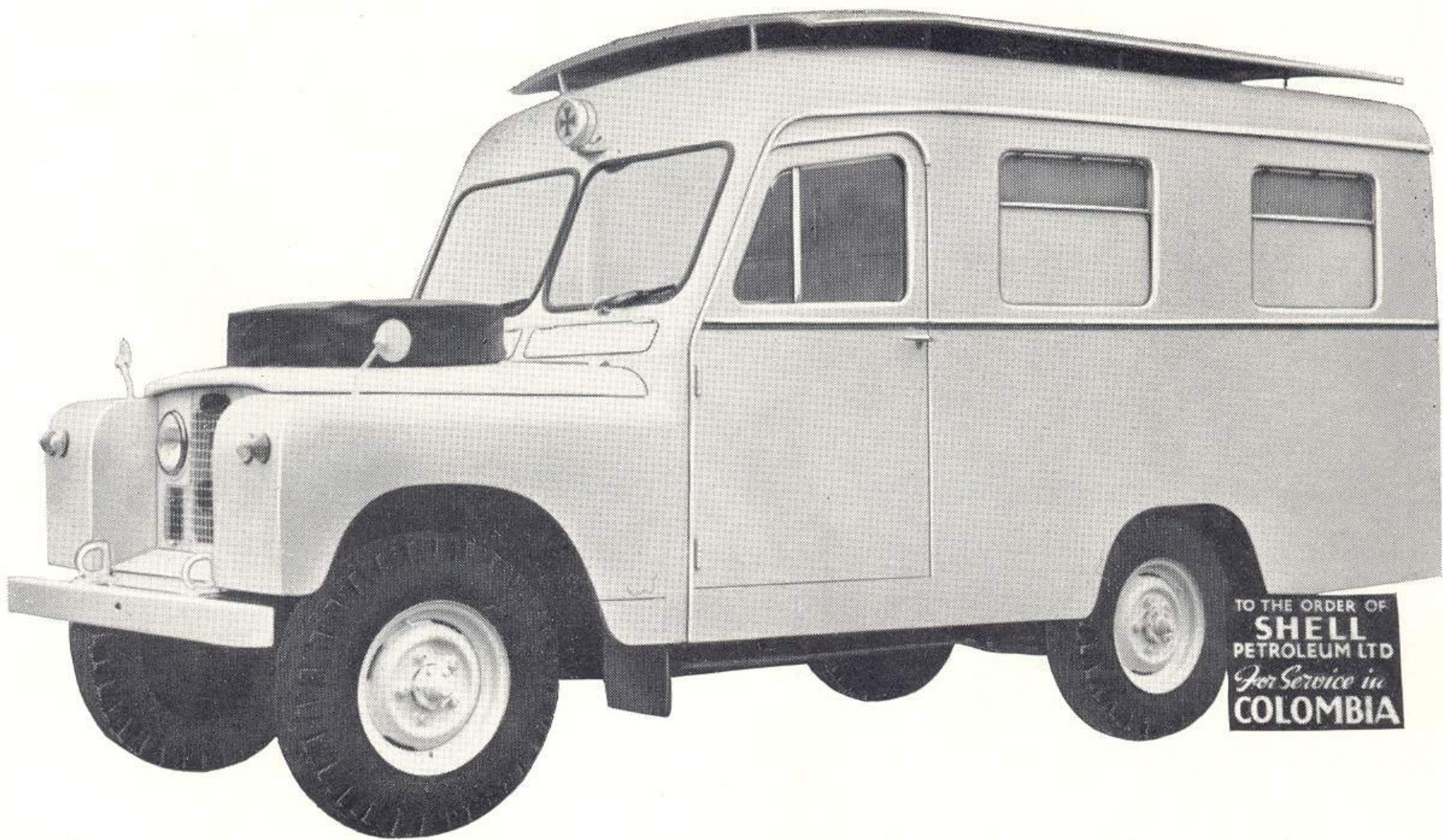


Lomas

AMBULANCES



APPROVED BY THE ROVER COMPANY LIMITED



ALL METAL CONSTRUCTION FOR OVERSEAS MARKET
TROPICAL ROOF IS AN OPTIONAL EXTRA.

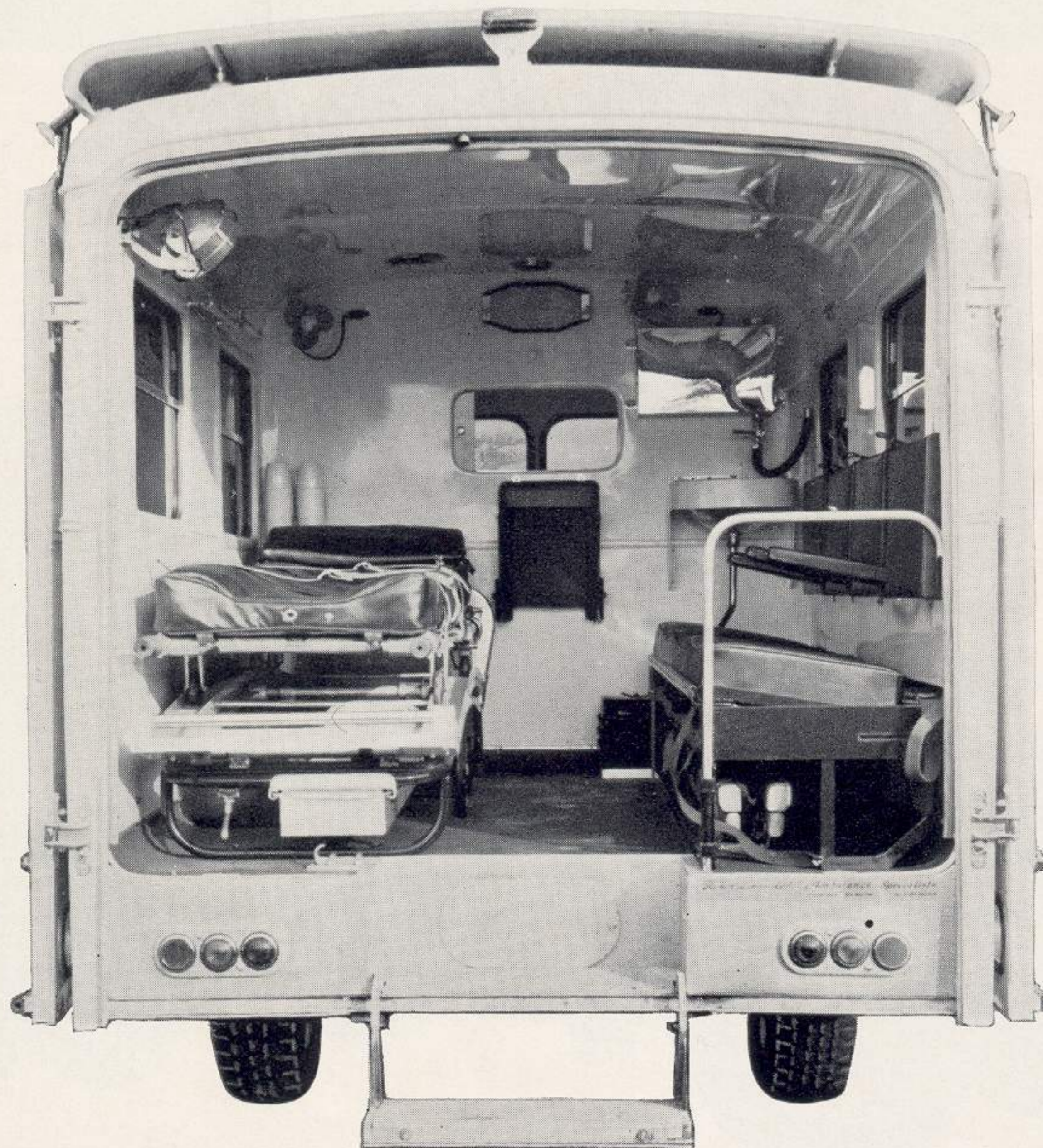
MODEL J/M

HERBERT LOMAS LIMITED, HANDFORTH, WILMSLOW, CHESHIRE

Telephone: WILMSLOW 5258 (5 Lines)

Telegrams: *AMBULANCE, HANDFORTH*

ALSO AT CHELTENHAM



INTERIOR No. 10

SEVERAL LOMAS INTERIORS ARE AVAILABLE ON THIS MODEL, A FEW OF WHICH ARE ILLUSTRATED, INCLUDING OUR VERY POPULAR No. 10. ALL WILL TAKE B.S.S. 896/60 AND I.S.O./60 STRETCHER

LOMAS EXTRAS SHOWN IN ILLUSTRATION ABOVE ARE :—

LOMAS PATENT LOADING TRAY

LOMAS BED AND PILLOW

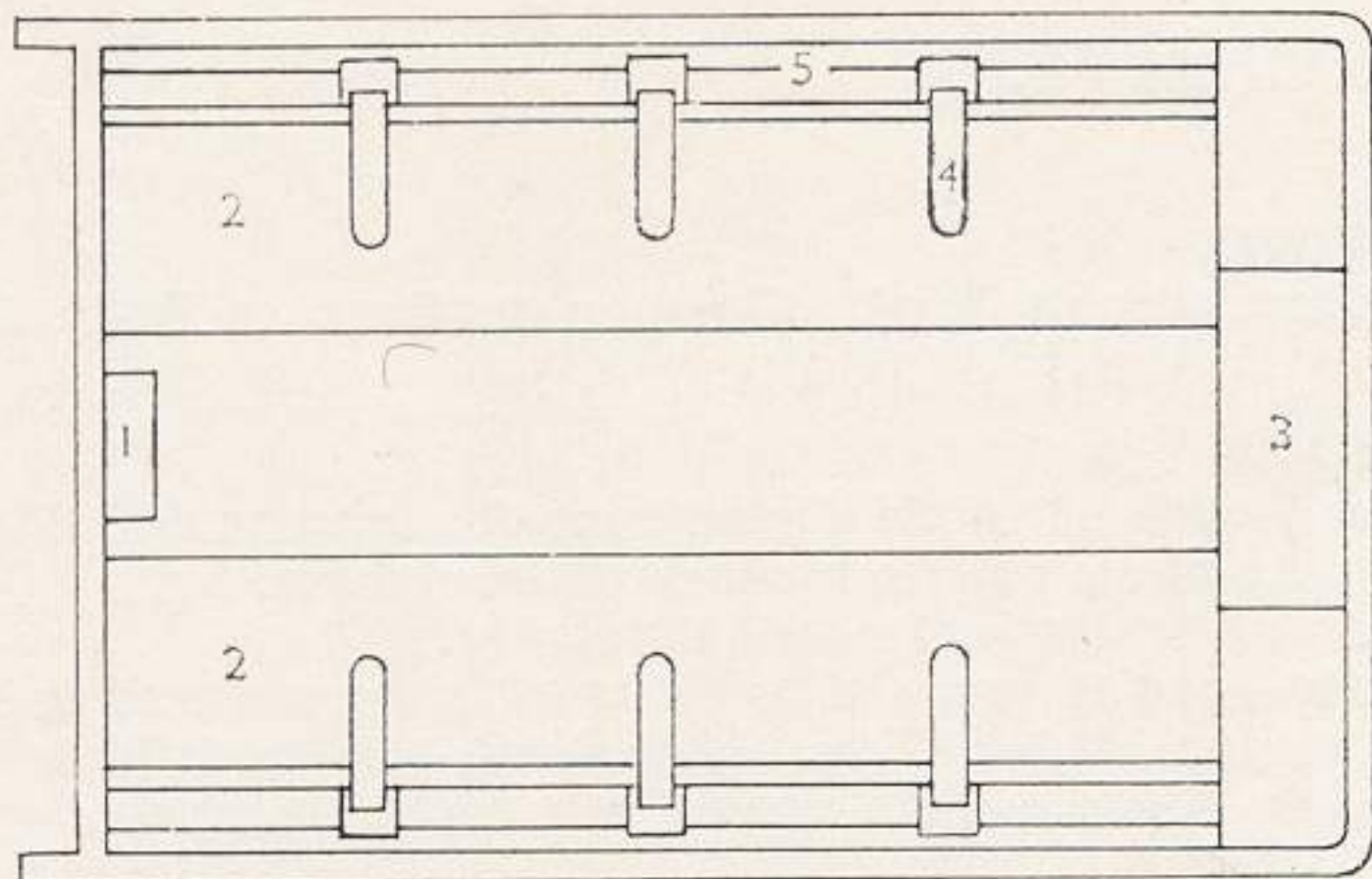
2 SPECIAL WIDE BODY STRAPS

STEPHENSON MINUTEMAN RESUSCITATOR

2 ELECTRIC FANS

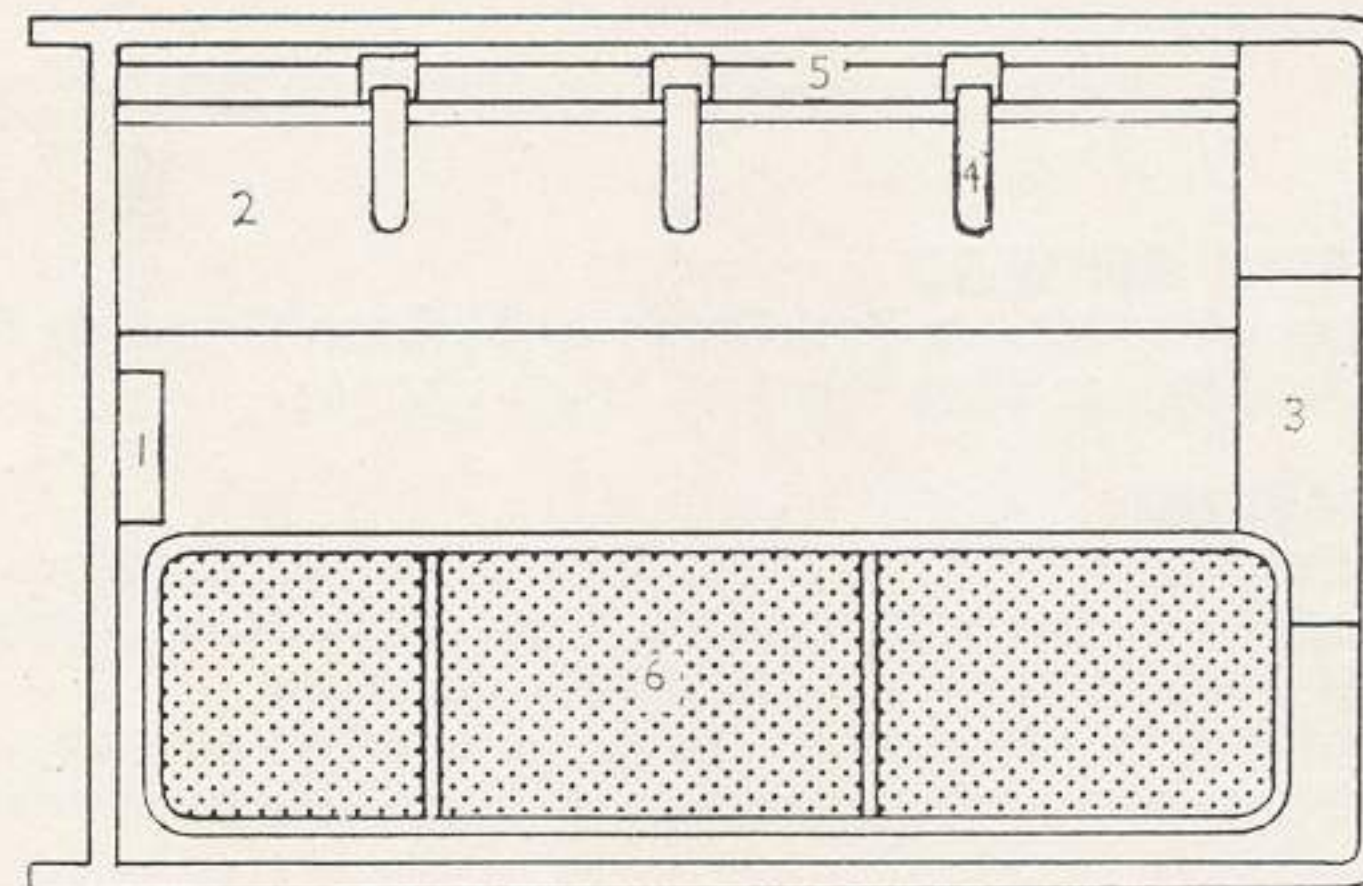
WASH BASIN AND TANK

FRANCIS REAR FLOODLIGHT



INTERIOR No. 6

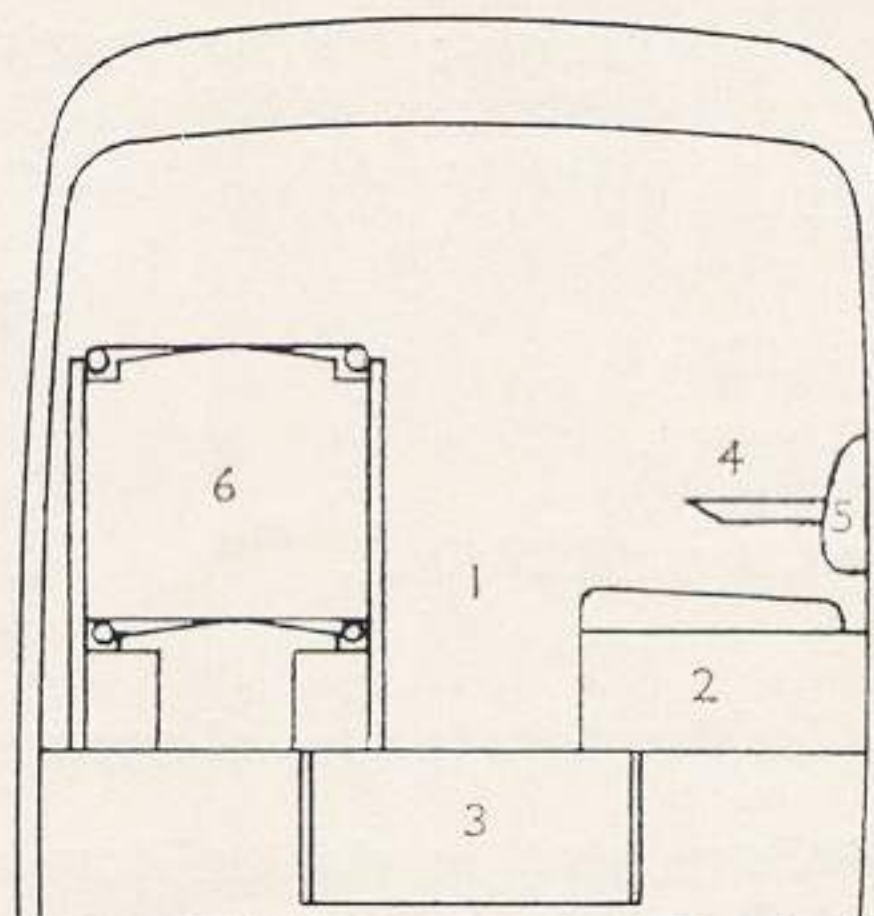
1. TIP-UP SEAT
2. LOMAS PATENT INSTANTANEOUS SEAT
3. FOLDING STEP WELL
4. FOLDING ARMRESTS
5. FIXED BACKREST



INTERIOR No. 5c

1. TIP-UP SEAT
2. LOMAS PATENT INSTANTANEOUS SEAT
3. FOLDING STEP WELL
4. FOLDING ARMRESTS
5. FIXED BACKREST
6. AMERICAN TYPE COT STRETCHER

1. TIP-UP SEAT
2. LOMAS PATENT INSTANTANEOUS SEAT
3. FOLDING STEP WELL
4. FOLDING ARMRESTS
5. FIXED BACKREST
6. DOUBLE ELEVATING GEAR



INTERIOR No. 11

ALTERNATIVE LAYOUTS
CAN BE ARRANGED
TO CUSTOMER'S OWN
SPECIFICATION

SPECIFICATION

Lomas Light Ambulance Body in all Metal Construction for mounting to the
Land-Rover 109" Wheel Base Chassis.

RIGHT OF WAY

Lamp with Geneva Red Cross or Maltese Cross or Red Crescent or Ambulance Sign fitted on Front Canopy.

FRAMING

In Sections of Light Alloy in form of Angle, Channel and Top Hat Sections bolted together with Aero Tight Nuts. Sections treated with Anti-Corrosion paint before Panelling.
Panelling in Aluminium, all joints overlapped and panels riveted to frame-work, Interior Panels of Light Gauge Aluminium.

PANELLING EXTERIOR AND INTERIOR

In Aluminium all joints overlapped and treated with Special Sealer.

ANTI-GALVANIC TREATMENT

All joints between dissimilar metals treated with dielectric Paint.

LIGHTING

Two Windows in each side of Body, frosted, Deeplite or Plain, Safety Glass.

Sliding Windows in portion of the built-up glasses.

Fixed Windows of Safety Glass in Rear Door.

WINDSCREEN

Two Piece Triplex Laminated Safety Glass Windscreen of Lomas Design. Twin Windscreen Wipers fitted at bottom of screen.

DRIVER'S COMPARTMENT

Full length doors at each side, hung on special hinges and fitted with locks, rubber bumpers, dovetails, etc.

Bucket Seat provided on Passenger Side, made to take two in Emergency, spring cushions with overlay of Latex covered in Vynide.

All Windows in Safety Glass.

SPARE WHEEL

Housed on Bonnet, provided with P.V.C. Cover.

VENTILATION

Two Air Extractors on Roof. Opening portions of Body Side Windows.

REAR DOORS

Double Rear Doors of ample dimensions for entrance of Sitting Patients and Loading and Unloading of Stretchers.

Doors fitted with inside and outside Handles.

Doors are designed to fold flat to sides of Body, secured in that position by spring loaded clips. Doors can also be held in line with Body when Ambulance is operating in restricted space.

FLOORING

Of Alloy Sheets, all treated to prevent corrosion. Floor covered with best quality lino with necessary aperture for mechanical inspection.

STEPS

A Recess is built in to centre of floor at the Rear, and a Folding Step drops out at this point, when the Step is folded up it fills the recess in the floor. This type of Step ensures the maximum head-room on entry.

Step Treads of Special Ribbed Alloy to prevent slipping.

PARTITION

At the Rear of Cab is a Sliding Window to allow Medical Attendant's Communication with the Driver. Means to open this window from either side is provided.

WAIST MOULDING

Polished Aluminium Moulding of screwed on type is fitted after final finish.

FINISH (Exterior)

In I.C.I. 300 Line to customer's choice of Colour.

LETTERING

A reasonable amount of lettering and affixing of Customer's Transfers.

INTERIOR DIMENSIONS :—

Length : 7' 7½" (2.324 m.m.).
Width : 5' 3½" (1.516 m.m.).
Height : 4' 11" (1.5 m.m.).

SHIPPING DIMENSIONS :—

Interiors 10 5c and 6

Length : 15' 11" (4.85 m.m.).
Width : 5' 10" (1.78 m.m.).
Height : 7' 5" (2.336 m.m.).
Weight : 2 tons 1 cwt. 0 qr. (2087 Kgs).

Interior 11

15' 11" (4.85 m.m.).
5' 10" (1.78 m.m.).
7' 8" (2.337 m.m.).
2 tons 3 cwt. 0 qr. (2189 Kgs).

The Rover Company Limited is not responsible for the manufacture of approved equipment and/or bodywork, although they have closely examined specification and design.

Matters concerning Sales (including shipping, delivery, etc.), service or Warranty claims are the responsibility of the manufacturer (whose name and address is given on this leaflet) or his agent.

In cases of difficulty concerning approved equipment, the Special Projects Section of the Land-Rover Engineering Department is available to offer advice.

Land-Rover Extras Required - NIL

THIS CONVERSION IS SUPPLIED COMPLETE AND DETAILED INFORMATION ON THE SPECIFICATION SHOULD BE OBTAINED FROM THE MANUFACTURER.