

THE

CINEROMA

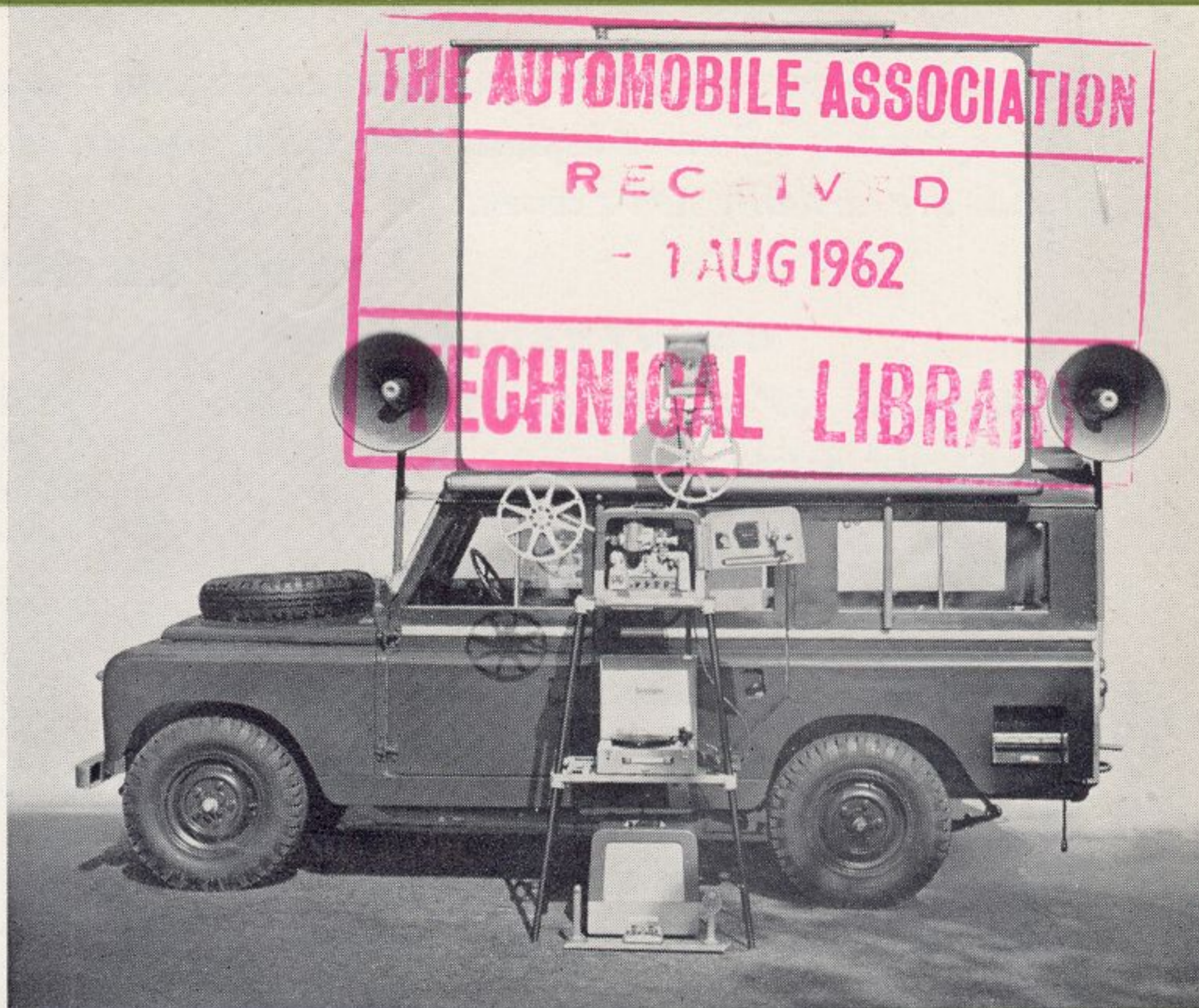
MOBILE CINEMA

As approved by the Rover Co. Ltd.
for use with the

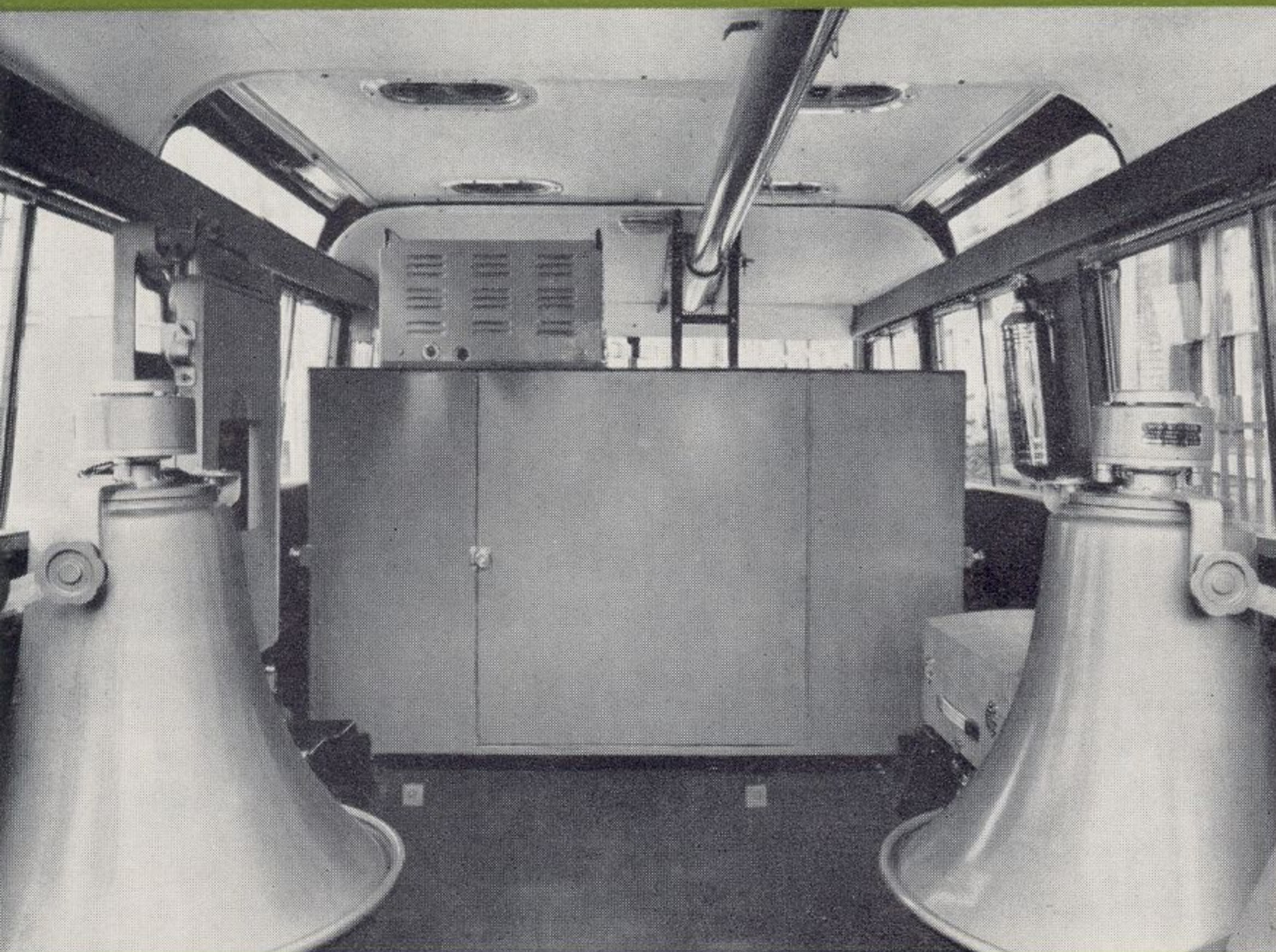
Designed to function under the most arduous conditions of terrain and climate the Cineroma is equipped as a self-contained 16 mm. mobile cinema for operation in the open air after dark and capable of accommodating audiences of many hundreds at each performance.

Commentaries can be added to any films in the local language when using the B & H Model 640 optical/magnetic 16 mm. projector.

Built to a tropical specification and supplied to Government Departments, UNICEF, and business organisations for use throughout the world.



INFORMATION—EDUCATION—PROPAGANDA—ADVERTISING—ENTERTAINMENT



Electrical power for operation of the equipment is provided by an alternator driven by the vehicle engine.

A closely regulated supply of 3kVA. at 230 volts, 50 cycles, is maintained by an engine speed governor. Overheating while generating is prevented by oil cooling equipment fitted to the engine which is complementary to the normal water cooling system.

Alternative mounting positions for the re-entrant speakers are fitted to the roof for making public announcements while travelling.

Although the unit may be operated by one man, seating is provided for three, while sufficient space is available for personal luggage, display material, etc.

Consult your nearest Rover agent
or write to

CINTEC LTD.

BROOKSIDE ROAD, LONDON N.19 ENGLAND

Telephone: Archway 6911 PBX. Cables & Telegrams: Cineroma London N.19

CINEROMA

The
Ideal Medium
for Mass
Communication

The equipment is selected to ensure reliability and length of service. Well designed stowage arrangements afford adequate protection against dust and transit shocks when travelling where roads are virtually non-existent.

TYPE LR 109/631SP

CONVERSION

LAND-ROVER 109" STATION WAGON fitted with:
Land-rover extras as detailed below—

Alloy platform on roof with access treadplate on forward section; screen and loudspeaker mounting assembly; 3 kVA. alternator and control panel; power wiring in flexible metallic conduit; automatic accelerator stop (while generating); floatation mounted, dustproof cabinet for stowage of delicate items of equipment; stowage facilities for all ancillary equipment and spares; built-in cable drum.

EQUIPMENT

Bell & Howell Model 631 SP opt/mag playback projector, complete with cabinet loudspeaker, 2" and 3" lenses.
Bellmont high level projector stand.
1.25 kVA. transformer with meter and tapping switch.
Two re-entrant weatherproof speakers.
8' x 6' matt surface tubular screen.
Floodlight and mounting assembly.
Microphone, floorstand and matching unit.
Rewinder and splicer.
Set of ancillary cables.
Power supply distribution box.
Complete set of spares and accessories, tools, service manuals, diagrams and operating instructions.

Shipping Specification

Dimensions : Length 180"
Width 66"
Height 82"

Weight : 4472 lbs.*

*weight varies according to scale of equipment

EFFICIENT DESIGN ENSURES MAXIMUM LIFE AND MINIMUM RUNNING COSTS
WORLD-WIDE SERVICE FACILITIES FOR BOTH VEHICLE AND EQUIPMENT

CINEROMA OPTIONAL EXTRAS

Model 640 Opt/Mag Projector ...	With facility for recording on magnetic sound track and available as alternative to model 631 SP with opt/mag playback
Tape Recorder	For recording and playing back speeches, public announcements, commentaries, musical interludes, etc.
Record Player	For intermission music
Public Address Amplifier	Operates from either the 12v. vehicle battery or 230v. a.c. for broadcasting music or speech while mobile or static. Supplied complete with hand microphone
4 Channel Mixer	Programme material from microphones, gram and tape recorder can be mixed for recording or broadcast by public address amplifier
Filmstrip and Slide Projector ...	Projects 2" x 2" slides or filmstrips complete with 4" and 6" lenses
Tripod Screen	Available for indoor film presentations.

Any combination of equipment can be supplied and modified as necessary to suit particular requirements

LAND-ROVER EXTRAS REQUIRED

Centre power take-off
Radio interference suppressors
Engine Speed Governor
Oil Cooler
Water thermo and oil pressure gauge
Dry battery in charged condition

De luxe bonnet with carrier
Lock for spare wheel on bonnet
Fuel filler lock
Additional Fuel tank beneath driver's seat
Equal setting for N.S. and O.S. springs
Heavy duty rear suspension

Less inward facing rear seats & bench seats