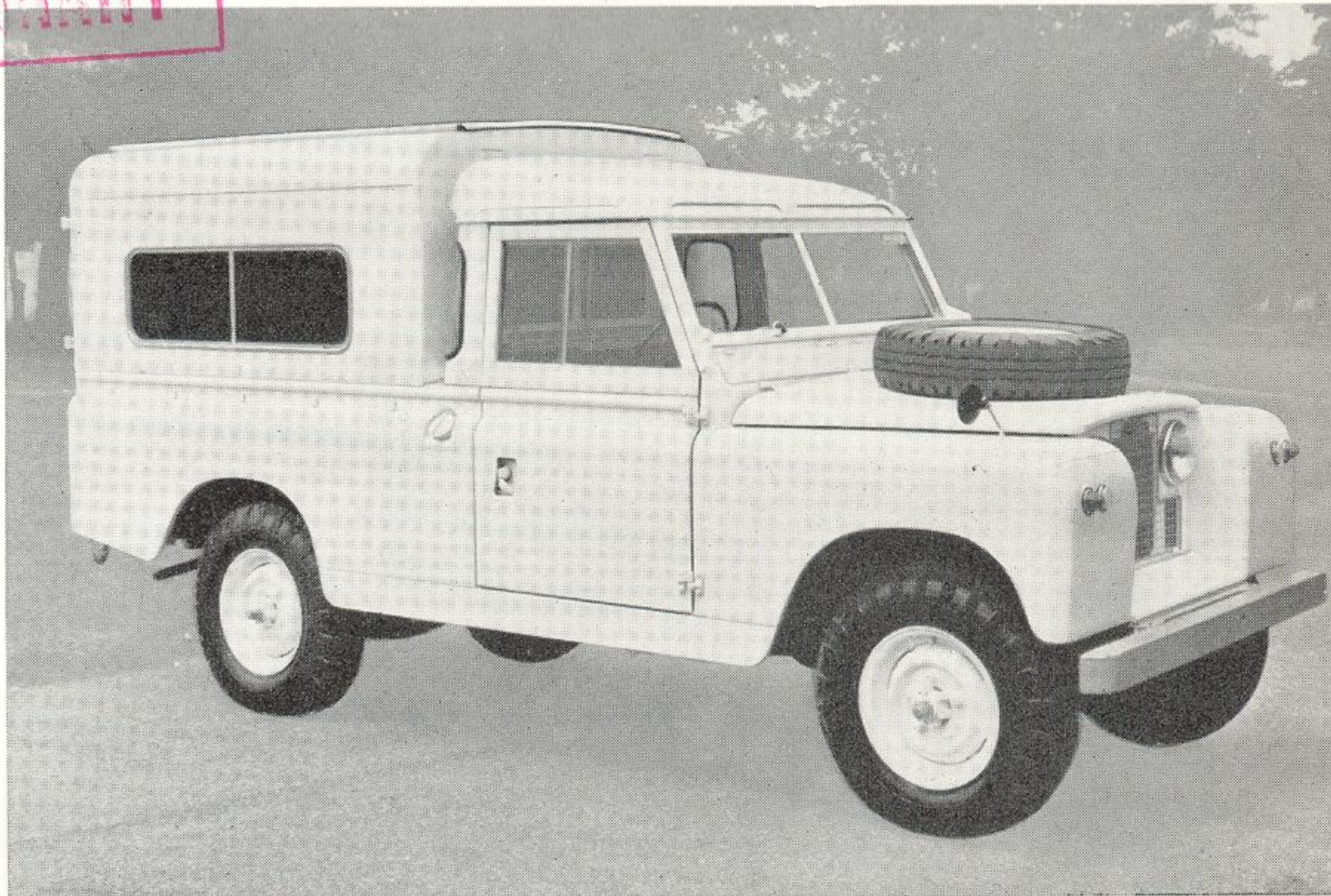
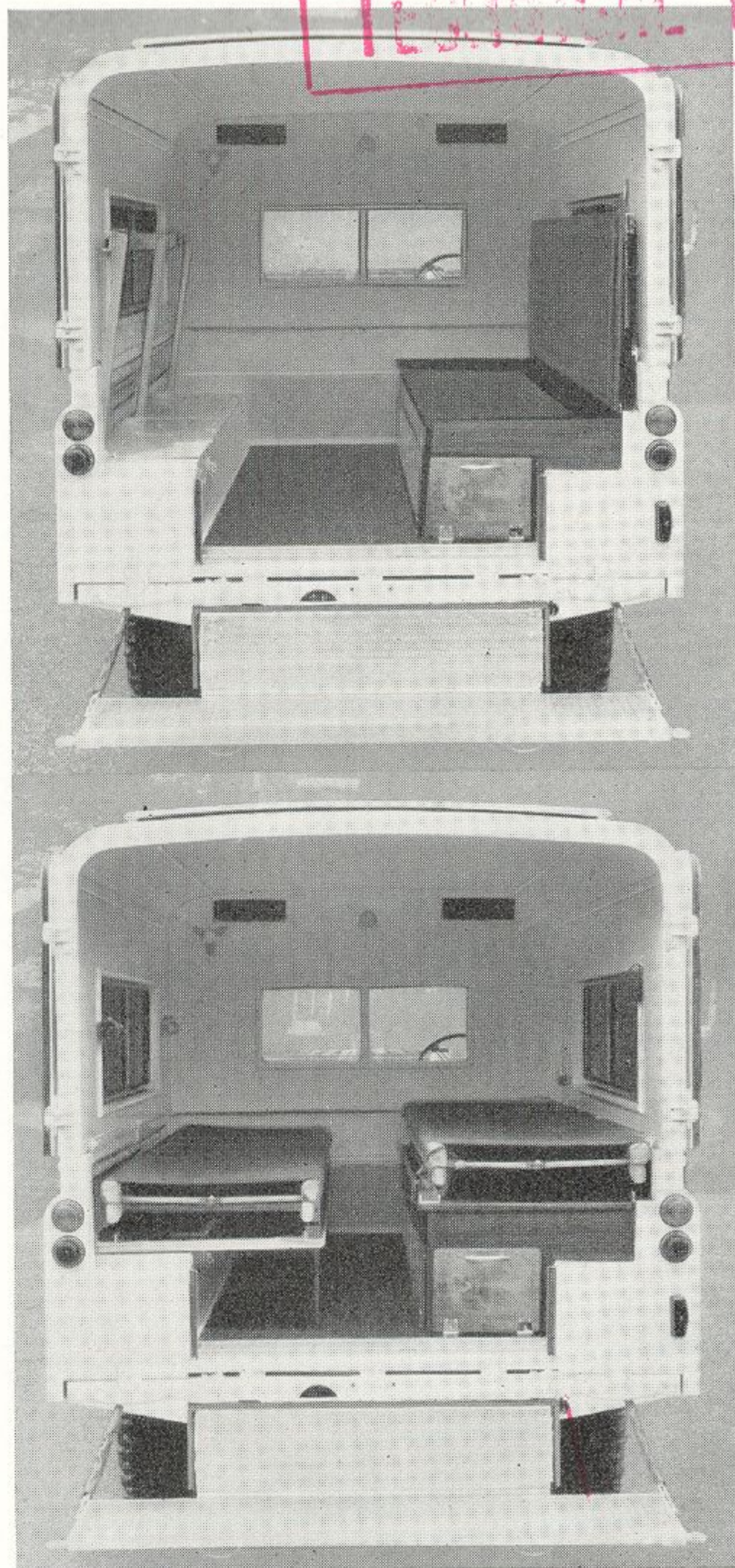


As approved by the Rover Co.
Ltd. for use with the . . .

AMBULANCE



THE AUTOMOBILE ASSOCIATION
RECORDED
- 5 DEC 1958
TECHNICAL LIBRARY



THIS much called for conversion has been developed as a result of repeated requests for a vehicle in the cheaper class, whilst still retaining the first-class finish and go-anywhere qualities of our standard Land Rover Ambulance.

The design provides for two stretchers, or one stretcher and three sitting cases in the rear compartment and a driver and two attendants in the cab.

Features include light alloy insulated top, adequate ventilation, easy stretcher loading, large sliding windows and full width rear step.

by **PILCHERS**

AMBULANCE BUILDERS

314, KINGSTON ROAD, WIMBLEDON, S.W.20

Telephone: LIBerty 2350 & 7058

SPECIFICATION AND DETAILS

GENERAL. The design is similar to Drawing No. 7428.

BODY. The top half of the body is framed in extruded aluminium sections, mainly top hat and zed; the interior and exterior panelled in 18 s.w.g. aluminium sheet.

ROOF. The roof is of the airstream type allowing air to pass between the main insulated roof and the top airstream section.

INSULATION. The space between the inner and outer panels of the Hard Top is insulated with Isoflex insulation.

REAR DOORS. These are of the full width type hung on substantial outrigger hinges and fitted with a locking-type handle. Each door is provided with a fixed window of toughened safety glass glazed in Claytonrite. The doors are arranged to open flat against the sides of the body and to be secured in this position by spring retaining catches. Draught welt is fitted round the doors for the exclusion of dust and sand.

LIGHTING. Two sliding windows are fitted each side of the body: purdah or frosted glass can be fitted, if desired. A double sliding window is fitted in the front bulkhead, of the same dimensions and coincides with the driver's rear cab window.

REAR STEP. The rear of body is cut away and a full width rear step fitted.

INTERIOR. The interior nearside is fitted with a folding stretcher platform which is capable of taking a telescopic stretcher, and of being raised or lowered when required, and can be strapped to the side of the vehicle when not in use.

On the offside of the body, a stretcher locker is provided, the lid of which is fitted with metal runners and the necessary straps and stretcher stops. This lid, when not in use as a stretcher carrier, lifts up and is strapped to the side of the body, forming a seat and squab for sitting cases. The seats are upholstered in Dunlopillo and covered with washable rexine. Beneath the seat, provision is made to accommodate stretchers when not in use.

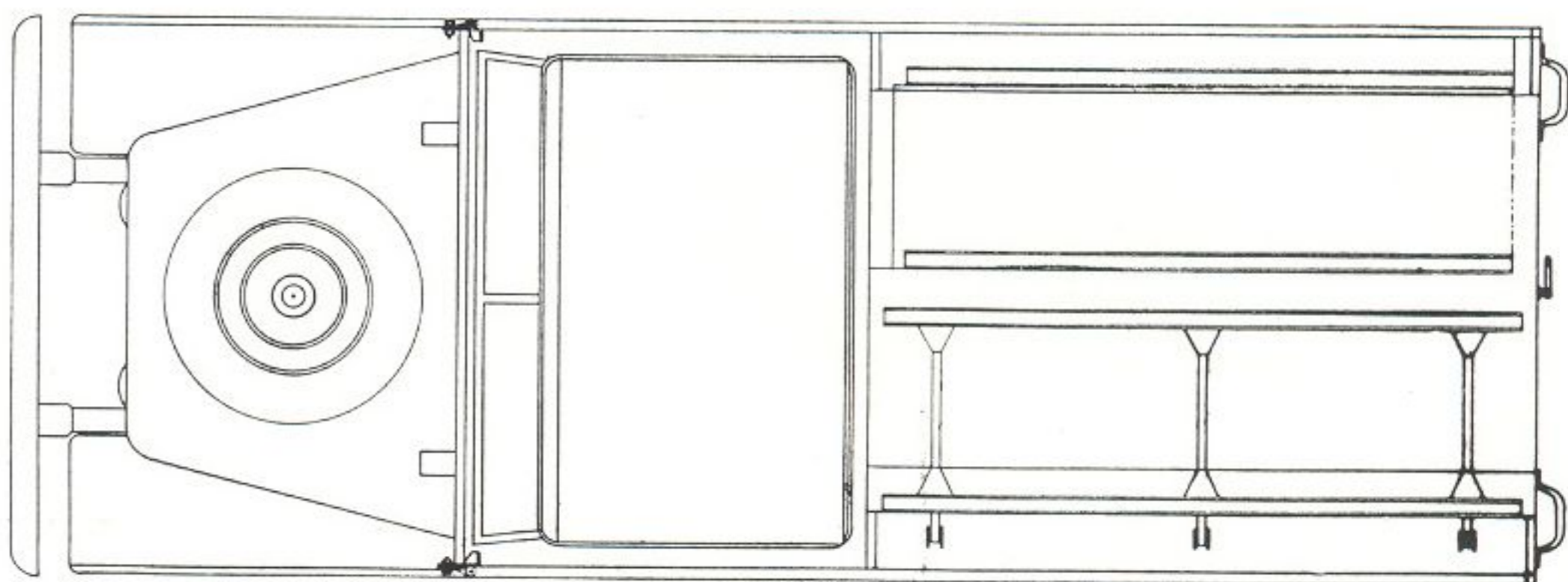
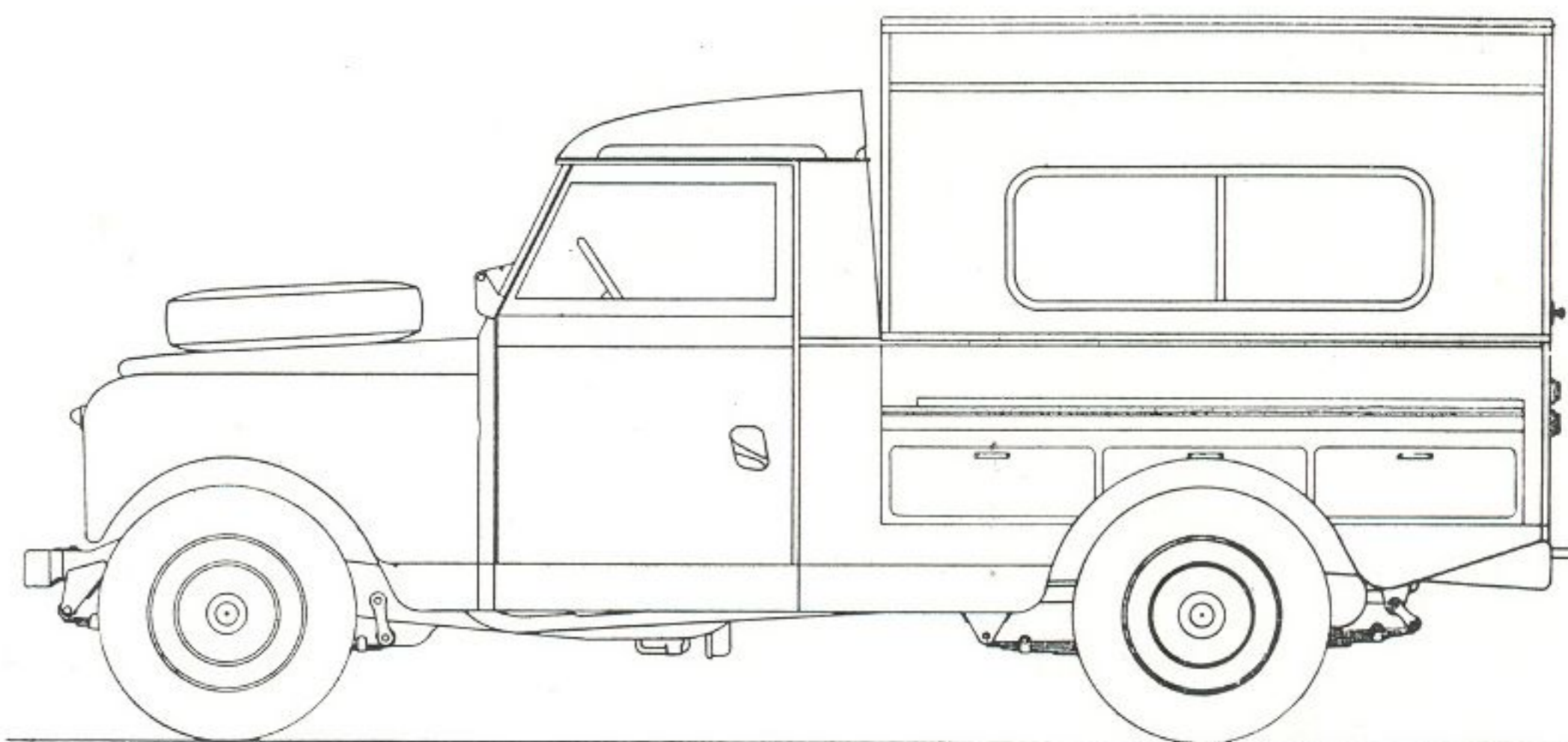
A 12 volt lamp giving ample light to the interior is also provided.

A 12 volt fan is mounted to the front bulkhead.

Two "Hit and Miss" ventilators with exterior metal louvres are fitted to the bulkhead.

FINISH. The interior is painted in Motor Ivory and the exterior in colour selected. Display matter extra.

DIMENSIONS.	Overall length	...	175"
	Overall width	...	55"
	Overall height	...	85"
	Shipping weight	...	3,808 lbs.



LAND ROVER EXTRAS REQUIRED :—

Bonnet with Spare Wheel Dish