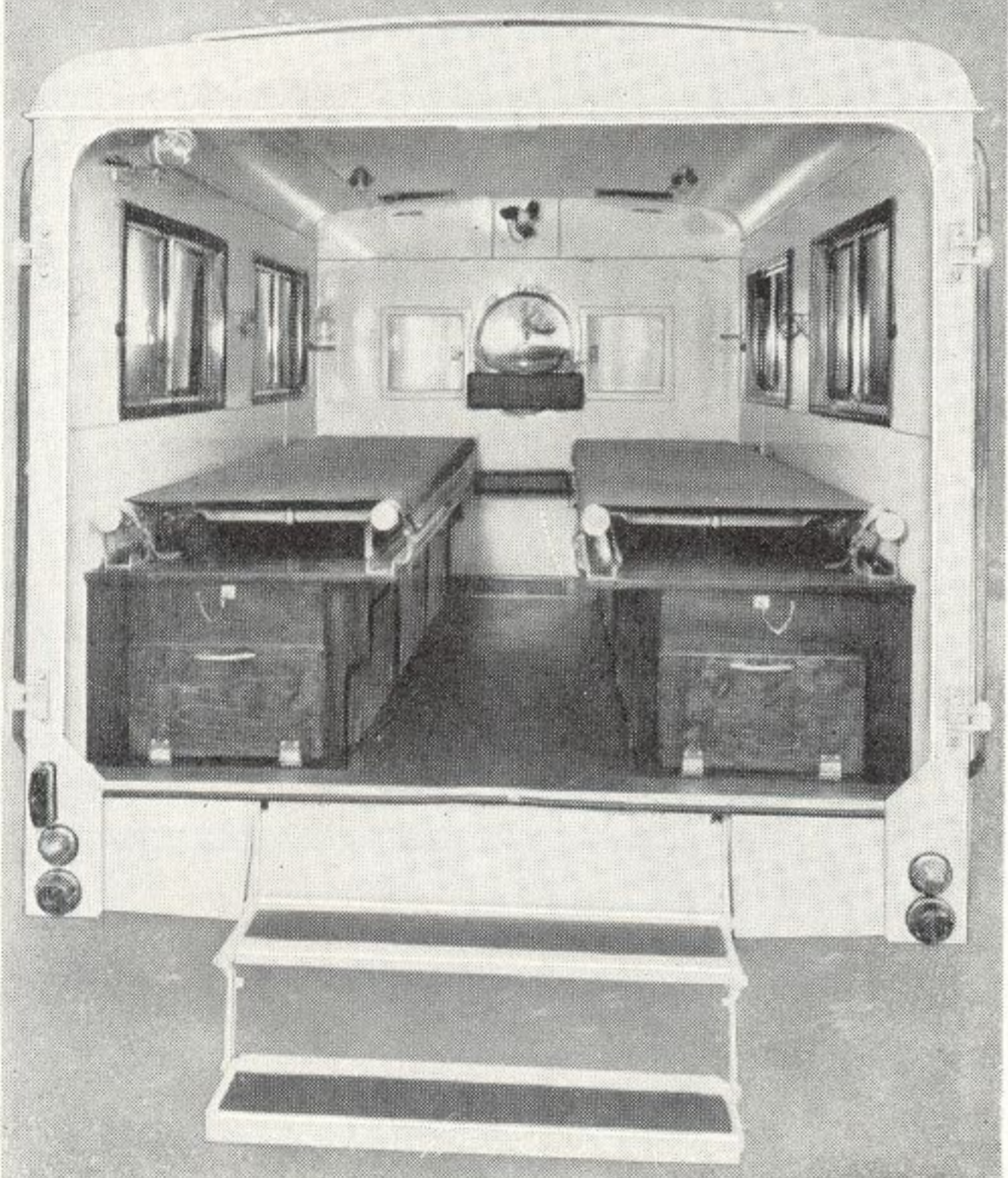
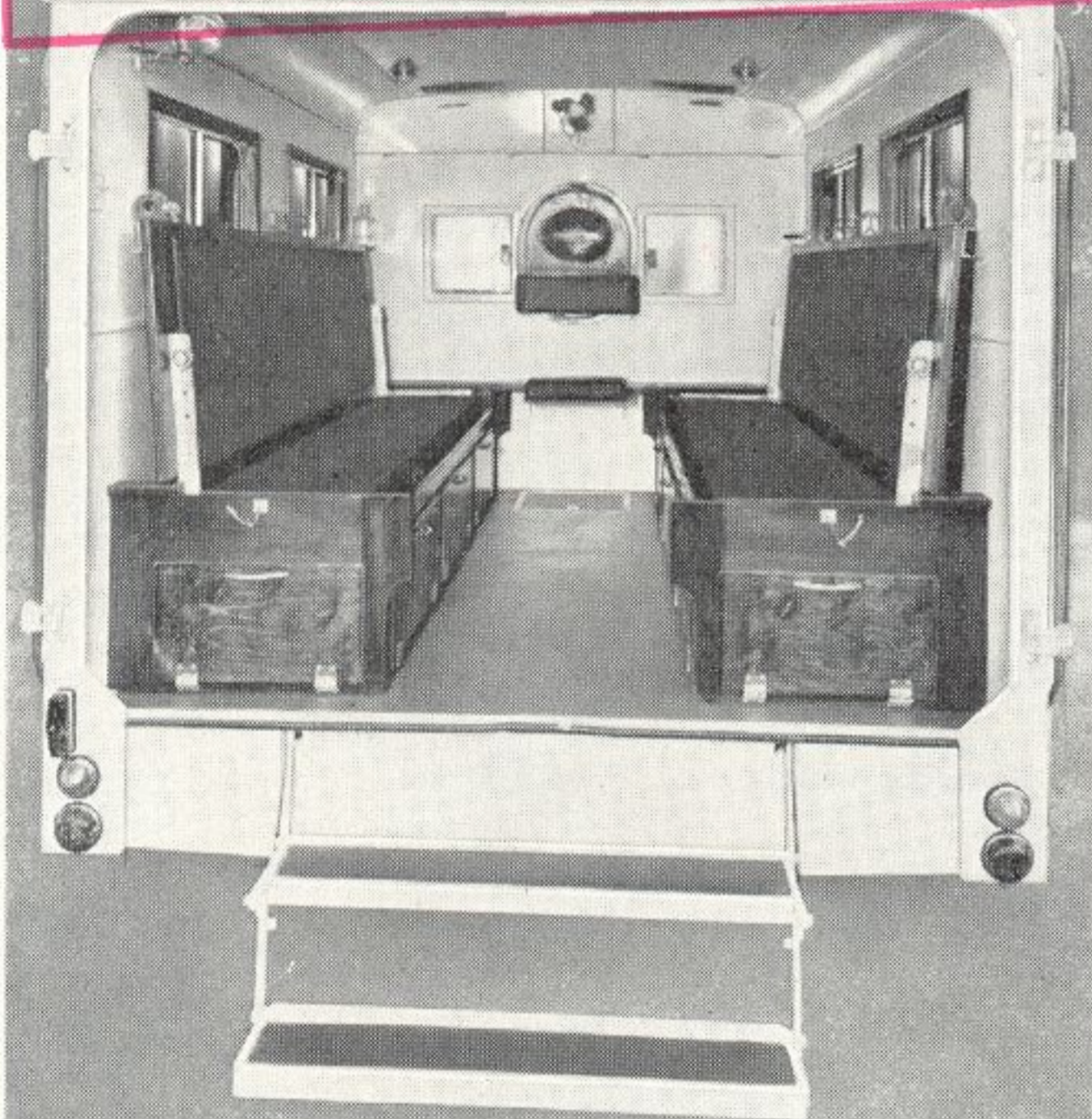


As approved by the Rover Co.  
Ltd. for use with the . . .

# TWO STRETCHER AMBULANCE



THE AUTOMOBILE ASSOCIATION  
RECEIVED  
- 2 MAR 1959  
TECHNICAL LIBRARY



**T**HIS up-to-date ambulance incorporates the latest aluminium alloy construction techniques to combine toughness with comfort, and has all the mobility and tenacity afforded by a four-wheel drive.

The design provides for two stretchers and an attendant, one stretcher and three sitting cases, or six sitting cases.

Features include built-in wash basin with water supply, fully insulated body for tropical use, and adequate locker accommodation.

by

# PILCHERS

AMBULANCE  
BUILDERS

314, KINGSTON ROAD, WIMBLEDON, S.W.20

Telephone: LIBerty 2350 & 7058

# SPECIFICATION AND DETAILS

**BODY.** All metal construction with substantial channel cross members. Top hat and zed extruded aluminium alloy sections of a size that all joints interlocking throughout and firmly riveted together. Gusset plates of ample dimensions, used to strengthen all corners and doorway openings. Outer skin of 16 gauge half hard aluminium sheet flush riveted to each main framing member, thus forming a very stiff semi-stressed skin structure.

**INTERIOR LINING.** Interior lining, sides, roof and bulkhead 18 gauge half hard aluminium. Interspace between the interior and exterior panels insulated with Isoflex plastic insulation, and all joints covered with aluminium beading.

**FLOOR.** Aluminium alloy throughout, firmly riveted to substantial cross members and covered with best quality cork lino. Provision in the centre gangway for the storage of bed pan and urine bottle in a specially ventilated container with a lift-up flap fitted with the necessary fasteners and lifting ring. The edges of the flap protected by aluminium half round beading.

**REAR STEP.** A double folding rear step of robust design firmly fixed to the chassis, the treads covered with lino and non-slip aluminium tread plate.

**ROOF.** Of the air stream type allowing air to pass between the main insulated roof and the top airstream section. The whole terminates in an illuminated ambulance sign above the driver's windscreen. This ambulance sign also incorporates two air intake louvres fitted with sand traps. Two hit and miss ventilators are fitted in the roof of the stretcher compartment exhausting air into the airstream roof.

**REAR DOORS.** Two full width rear doors hung on substantial outrigger hinges fitted with robust dovetails and door locks, each door fitted with fixed safety glass window glazed in Claytonrite. The doors are arranged to open flat against the sides of the body and are secured in this position by instantaneous spring loaded door retaining catches. A sunken type exterior door handle is fitted.

**STRETCHER COMPARTMENT.** The stretcher compartment is divided from the driver's cabin by a double lined insulated bulkhead, into which is constructed two lockers for the storage of blankets, sputum bowl etc., the doors of which are fitted with chromium plated locker catches. Two sliding communication windows are fitted below these lockers and a bracket carrying a glass stoppered drinking water bottle is provided with throw-away drinking cartons. A Beresford folding wash basin complete with 1½ gallon water tank is provided in the centre of the bulkhead, all plumbing being concealed by the bulkhead panels. The wash basin forms an integral part of the bulkhead when not in use. A tip-up attendant's seat, well upholstered with Dunlopillo and covered in best quality washable rexine is also provided, firmly fixed to the bulkhead below the wash basin. On each side of the body a stretcher locker is provided, the lid of which is fitted with metal runners and the necessary straps and stretcher stops. This lid, when not in use as a stretcher carrier, slides on roller bearings towards the centre of the vehicle, being automatically stopped by a lightly loaded catch. The lid then lifts up and is strapped to the side of the body, forming a seat and squab for sitting cases. The seats are upholstered in Dunlopillo and covered with washable rexine. Beneath the seats provision is made to accommodate stretchers when not in use. Alternative types of stretcher gear can be fitted, if desired, prices of which can be given on application.

**LIGHTING.** Two interior lamps of the flush type fitted in the roof of the vehicle and controlled by individual switches. A Universal loading lamp is fitted to the extreme rear of the compartment. Two half sliding windows are fitted in each side of the body, glazed in toughened safety glass. Purdah or frosted glass can be fitted, if desired.

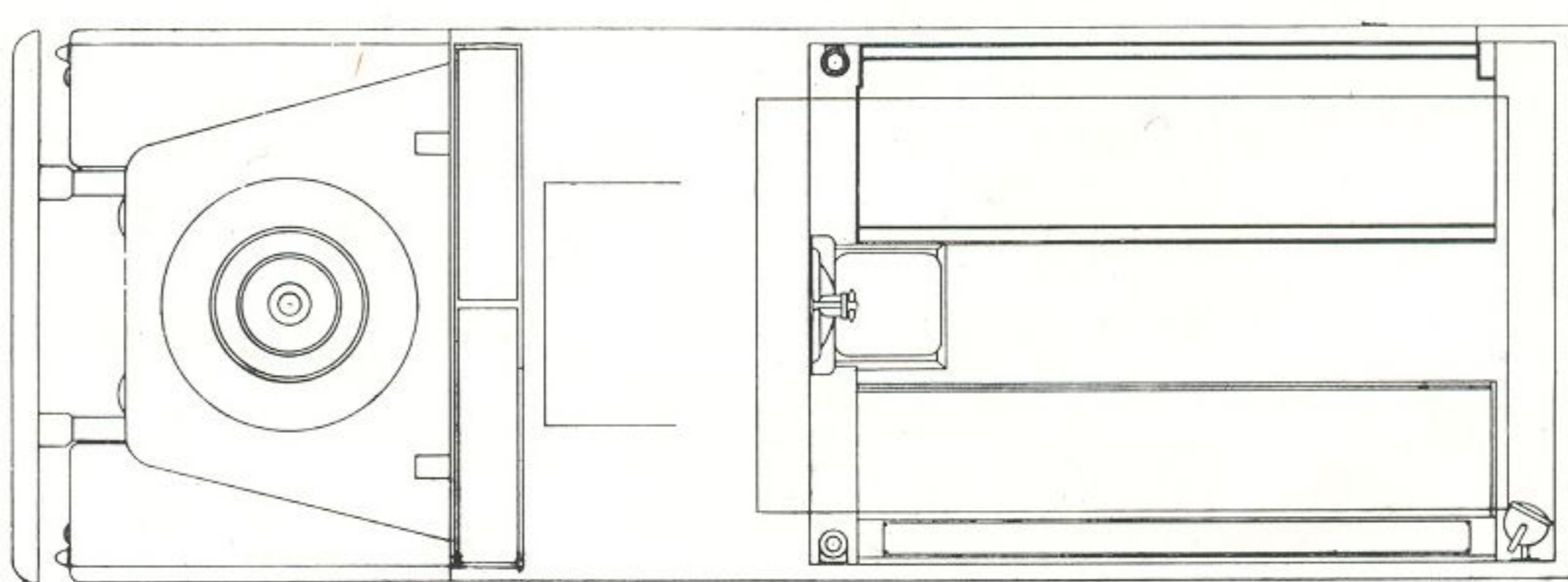
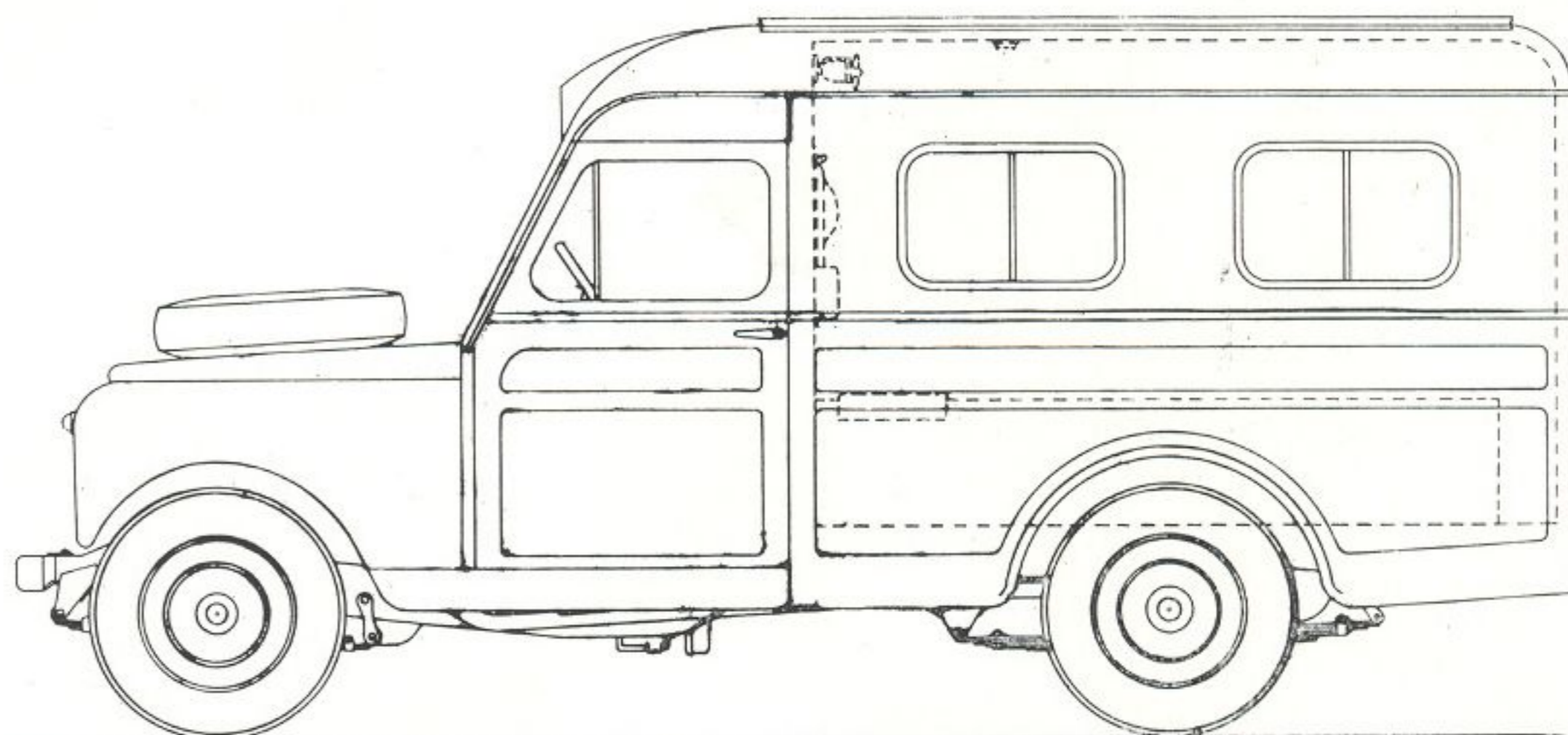
**DRIVER'S COMPARTMENT.** Totally enclosed with full length front doors fitted with robust locks and hinges and safety glass windows. An opening type windscreen is provided to give maximum view of the road, complete with two windscreen wipers. A bench type seat, capable of seating three persons, with tool box and storage space beneath, is provided.

**AMBULANCE SIGN.** An ambulance sign is provided at the front of the roof. Hinged panels for bulb replacement are fitted.

**FINISH.** The interior and exterior to be finished in colour selected. Display matter extra.

**ACCESSORIES.** Siren or Alarm bell and wing mirrors are provided.

<b>DIMENSIONS.</b>	Overall length	... ..	Approx. 14' 9"
	„ height	... ..	„ 7' 1"
	„ width	... ..	„ 5' 5"
	Shipping weight	... ..	3,920 lbs.



**LAND ROVER EXTRAS REQUIRED:—**

Bonnet with Spare Wheel Dish