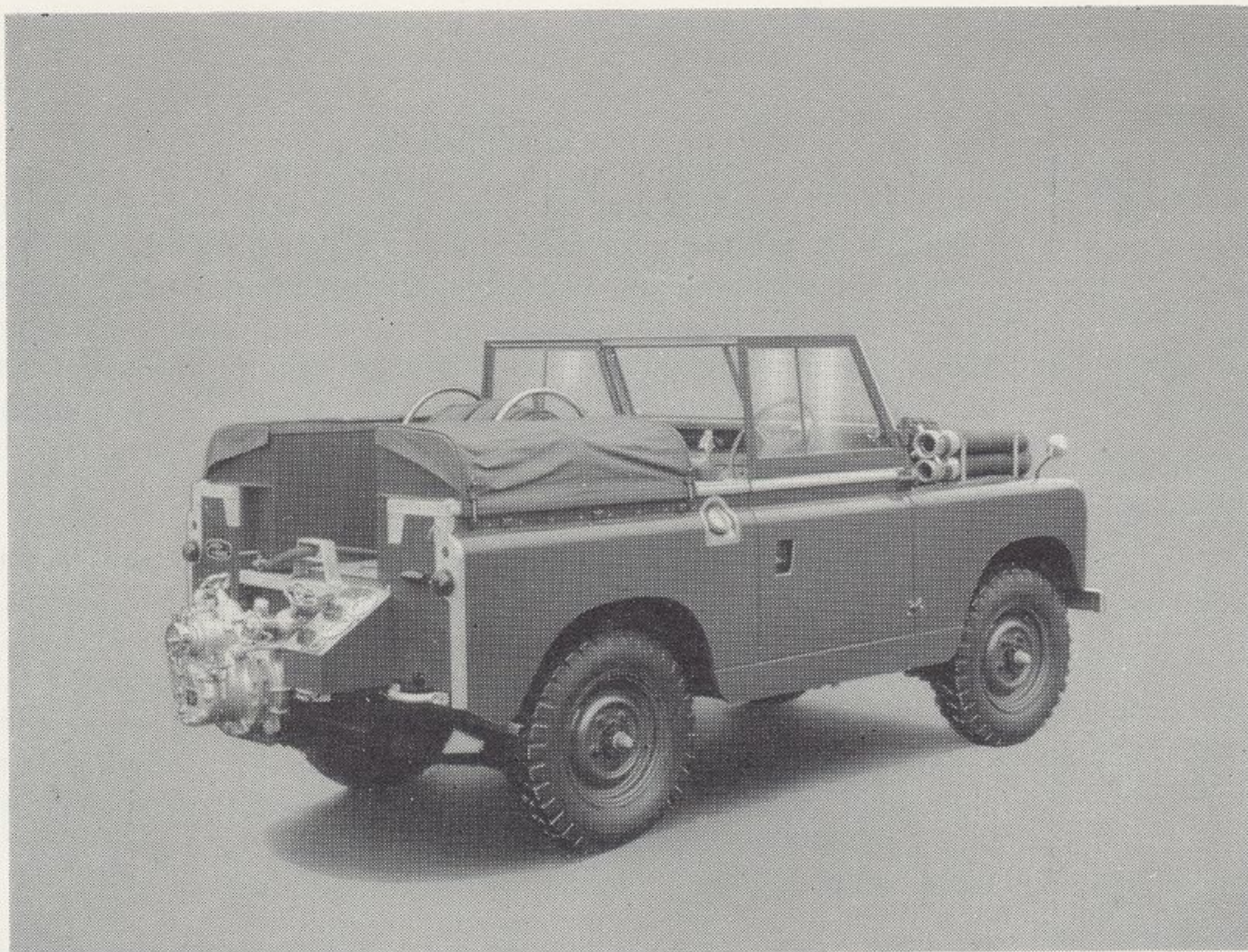


THE REDWING LAND-ROVER FIRE APPLIANCE TYPE FT/1 AND FT/2

As approved by
The ROVER CO. LTD.



$\frac{3}{4}$ Rear View (without cab)

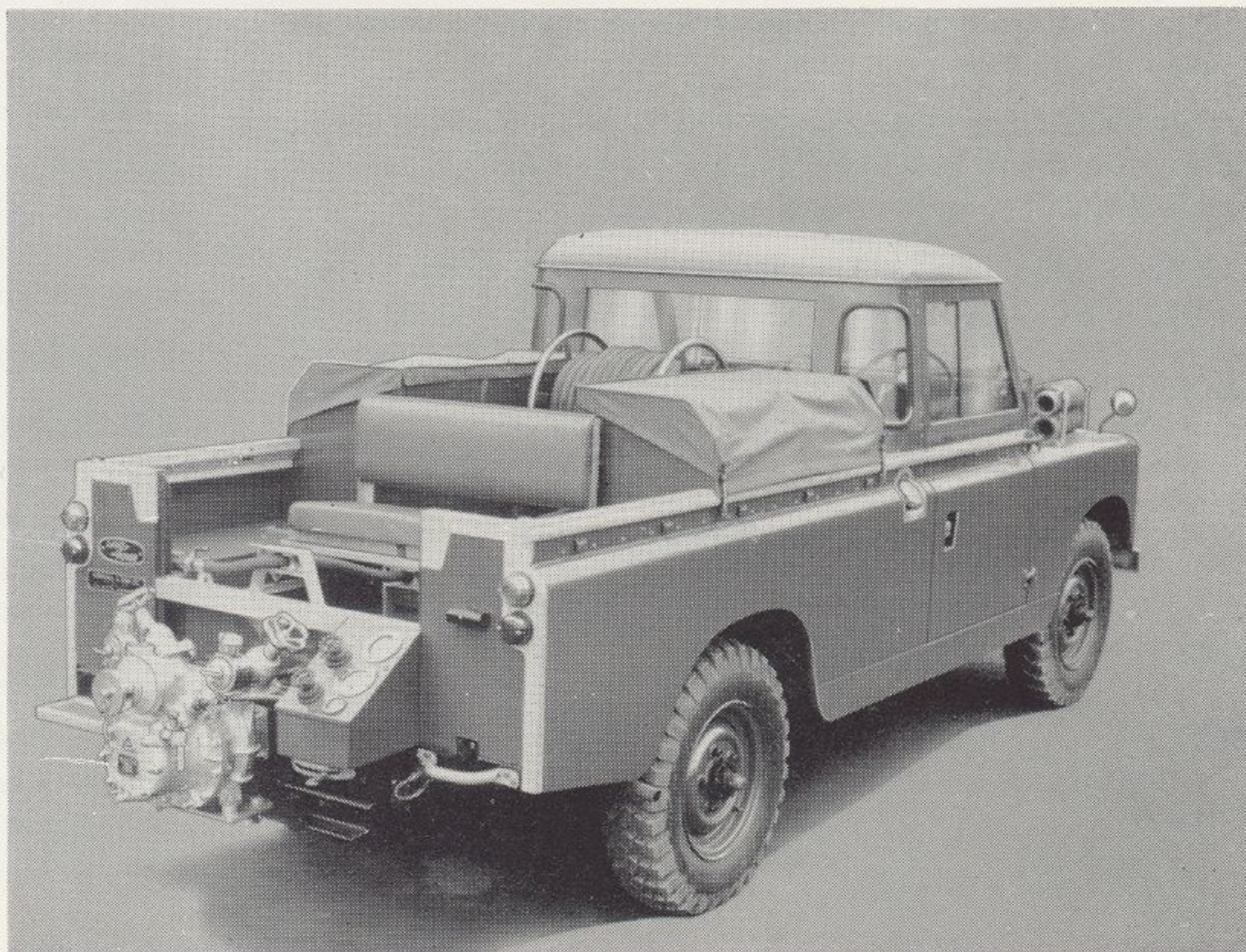
REDWING FT/1
based on
88" REGULAR LAND-ROVER

Accommodation for crew
of three in driving
compartment

REDWING FT/2

based on
109" LONG LAND-ROVER

Accommodation for crew of five;
three in the driving compartment,
two in rear of appliance



$\frac{3}{4}$ Rear View (with cab)



THE REDWING . . .

LAND-ROVER FIRE APPLIANCE

S P E C I F I C A T I O N

APPLIANCE

GENERAL. The basic equipment carried by the FT/1 and FT/2 is identical with the exception of the seating accommodation.

PUMP. KSB 210 g.p.m. self-priming centrifugal pump bolted to rear cross member and driven by shaft from main gearbox. Twin delivery valves are mounted directly on the pump body. Delivery and suction hose couplings are NOT supplied as standard.

CONTROL PANEL. Mounted alongside pump, contains throttle, compound gauge, pressure gauge, 2 valves, water and oil temperature gauge.

TANK. Galvanised steel, 40 galls. (182L) baffled. Fitted between wheelarches and filled via pump suction or bucket filler.

HOSE REEL. Mounted amidships, contains 120' of $\frac{3}{4}$ " bore hose with shut-off nozzle of approved design. Hose is threaded through a roller guide at the rear enabling it to be run out at 90° to the longitudinal axis of the appliance.

STOWAGE. Lockers for hoses, etc., are built over wheelarches, each locker approximately 38½" long x 13" wide x 20" deep. These have canvas covers for weather protection, secured by spring-loaded clips to the sides of the appliance. Provision is made to carry two 10' lengths of 3" suction hose in brackets round the bonnet of the appliance.

BODYWORK. Is of high tensile non-corrodible sheet metal. Wings, bonnet, doors and bodysides are painted fire engine red. All external steel fittings are heavily galvanised.

OPTIONAL EQUIPMENT. Various items, e.g. siren, flashing lights, searchlights, British Standard instantaneous couplings carrying 2½" delivery hose, blanking caps for delivery hose couplings, standard suction round thread to B.S.S. No. 336 for 3" suction, metal truck cab for FT/1, etc. Full details available on application.

SHIPPING DETAILS

	FT/1	FT/2
LENGTH	12' 10"	15' 6"
WIDTH	5' 6"	5' 6"
HEIGHT	5' 6"	6' 4"
WEIGHT		
with cab	6' 2"	
with cab	3,556 lbs.	3,962 lbs.
with cab	3,612 lbs.	

CHASSIS

CHASSIS. Welded fabricated box section with box section cross members, providing great torsional and diagonal rigidity. The body is mounted on outriggers welded to side members. The springs are the semi-elliptic type, underslung, on rubber bushes all round. Shock absorbers, double-acting telescopic type. Four wheel drive is provided, automatically selected when transfer box low ratio is engaged. Drive to front axle optional with high ratio engaged; this is selected by an independent lever.

POWER UNIT. Four cylinders. Overhead inlet and exhaust valves. Bore 90.47 mm. (3.562 in.), stroke 88.9 mm. (3.5 in.), capacity 2,286 c.c. (139.5 cu. in.). Maximum B.H.P. 77 at 4,250 r.p.m. Maximum torque 124 lb. ft. (17 mKg.) at 2,500 r.p.m. Compression ratio 7 to 1. Cylinders cast integral with crankcase. Detachable cast iron cylinder head carrying all valve gear. Forged steel 3-bearing crankshaft fully balanced and counterweighted. Copper-lead main and big-end bearings. A distributor cut-out limits the engine speed to 4,200 r.p.m.

GEARS. Four forward speeds and reverse. Two-speed transfer box in conjunction with main gearbox gives eight forward speeds and two reverse.

CLUTCH. Single dry plate, 9 in. diameter, hydraulically operated by pendant pedal.

BRAKES. Hydraulically operated foot brakes requiring light pressure on the pendant pedal. Two leading shoe brakes on front wheels. Mechanically actuated handbrake operates on transmission shaft to rear axle.

TYRE SIZE. FT/1 700 x 16. FT/2 750 x 16.

COOLING SYSTEM. By pump and fan, thermostatically controlled. Capacity 17½ pints (9.95 litres). Pressurised.

ADDITIONAL COOLING is provided by an oil cooler working in conjunction with the fire pump enabling long periods of pumping to be maintained.

ELECTRICAL SYSTEM. Lucas 12 volt. Coil ignition.

FUEL SYSTEM. 10-gallon (45 litres) tank with external filler at side of body. Solex down-draught carburettor with oil bath type air cleaner and silencer and integral centrifugal pre-cleaner. Mechanical pump and sediment bowl with gauze filter.

The information contained in this leaflet is correct at date of publication but is subject to alteration without notice