

As approved by the Rover Co. Ltd.
for use with the



EVBALL

spraying equipment



Sprayers

88in or 109in Wheel Base Normal Control Vehicles

Evral 'LRD 1000/100'

For Agricultural and Local Authority use

Covered in Section 6 of the official price list

100-gallon tank for the short wheelbase LR.



Choice of front or rear mounted 24ft or 30ft booms. Hardi plastic fan jets placed at 18" centres on $\frac{3}{4}$ " bore UPVC boom pipes. The whole carried on mild steel boom frames. Rear mounted D3 triple diaphragm pump giving 1000 gph at no head and pressures up to 120 psi. driven from the rear PTO. Combined diaphragm type pressure control/relief valve for corrosion-free service. "Ejector Agitator" fitted as standard. Self-filling incorporated in the design. Two large drain plugs and sump.

109in Wheel Base Normal Control Vehicle only.

Evral 'LRD 1000/160'

160-gallon tank for the long wheelbase LR.



Design Features

- 1 Mono construction tank/ frame assembly of mild steel, hot dipped galvanized for trouble free life, proven over many years of experience, and ensuring an excellent strength to weight ratio.
- 2 Diaphragm pumps giving long life and low cost maintenance. Able to cope with the widest range of chemicals, and especially *wettable powders and suspensions*.
- 3 All control valves are either of the lubricated cast iron, nylon coated ball, or quick action diaphragm type.
- 4 Boom section isolating cocks operate the 3 spray sections independently from the Cab.
- 5 Combined pressure control/relief valve of the diaphragm type, ensuring trouble free operation with the chemical isolated from the working parts.
- 6 Triple filtration includes large tank lid filter.
- 7 Two graduated contents sight glasses on tank.
- 8 Self-filling standard with 15ft of hose. Suction strainer and basket optional extra.
- 9 Patent plumbing ensures all jet supply pipes are kept full of liquid to give instant spray pattern when switching on and clean "cut-off" on turning off.
- 10 Low pressure plastic fan jets, with extreme abrasion resistance, fitted in plastic eyelets on plastic boom pipes. Two sets of jets are supplied as standard, please state outputs required when ordering.
- 11 Full flow of pump carefully ducted to ensure swirl agitation when spray is turned off at the headland. All excess output, when spraying, is used for agitation. Ejector Agitator fitted as standard, for additional agitation when applying wettable powders or formulations in suspension.
- 12 Ability to fill the tank and operate with a minimum of agitation when frothing chemicals are used.
- 13 Ability to give both high and low outputs at high and low pressures without use of a spanner.
- 14 Tank emptied completely without air entering the system and impairing spray pattern.
- 15 Easily adapted for hand lance work. See section 9 of price list.
- 16 Easily and inexpensively converted for use with liquid fertilizers.

Performance Data

Sprayer Model	Pump Model	G.P.H.	*Max PSI	Boom Width	G.P.A.	Speed MPH
Evrall 1000/100	D3/1300	1000	120	30ft	Up to 50	6
				24ft	Up to 60	6
Evrall 1000/160	D3/1300	1000	120	30ft	Up to 50	6
				24ft	Up to 60	6

*Alternative relief valve springs can be fitted to give pressures up to 200 psi.

Note: All the above booms have jets at 18in centres.

Liquid Fertilizers

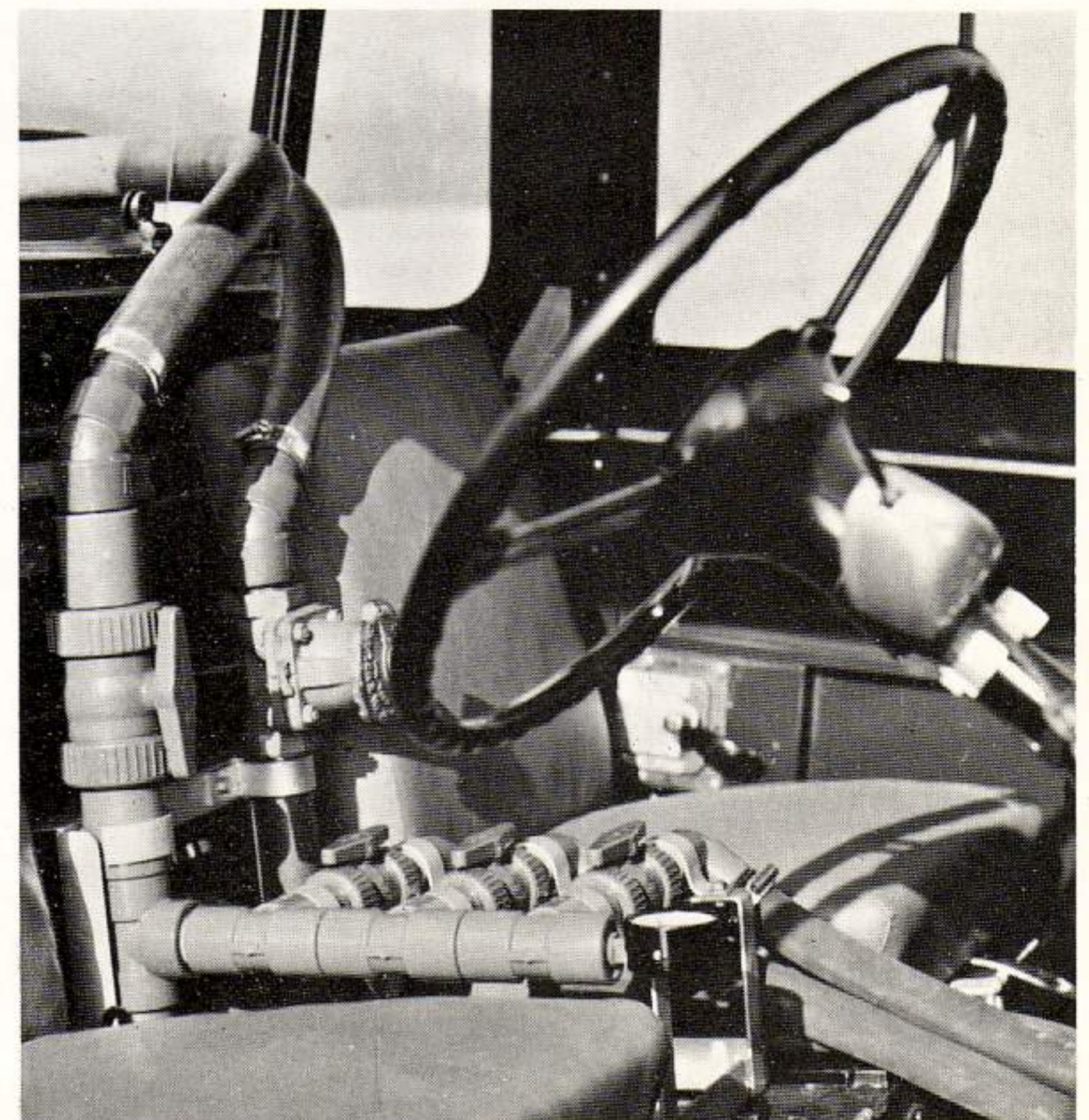
Liquid Fertilizer conversion sets available as original equipment.

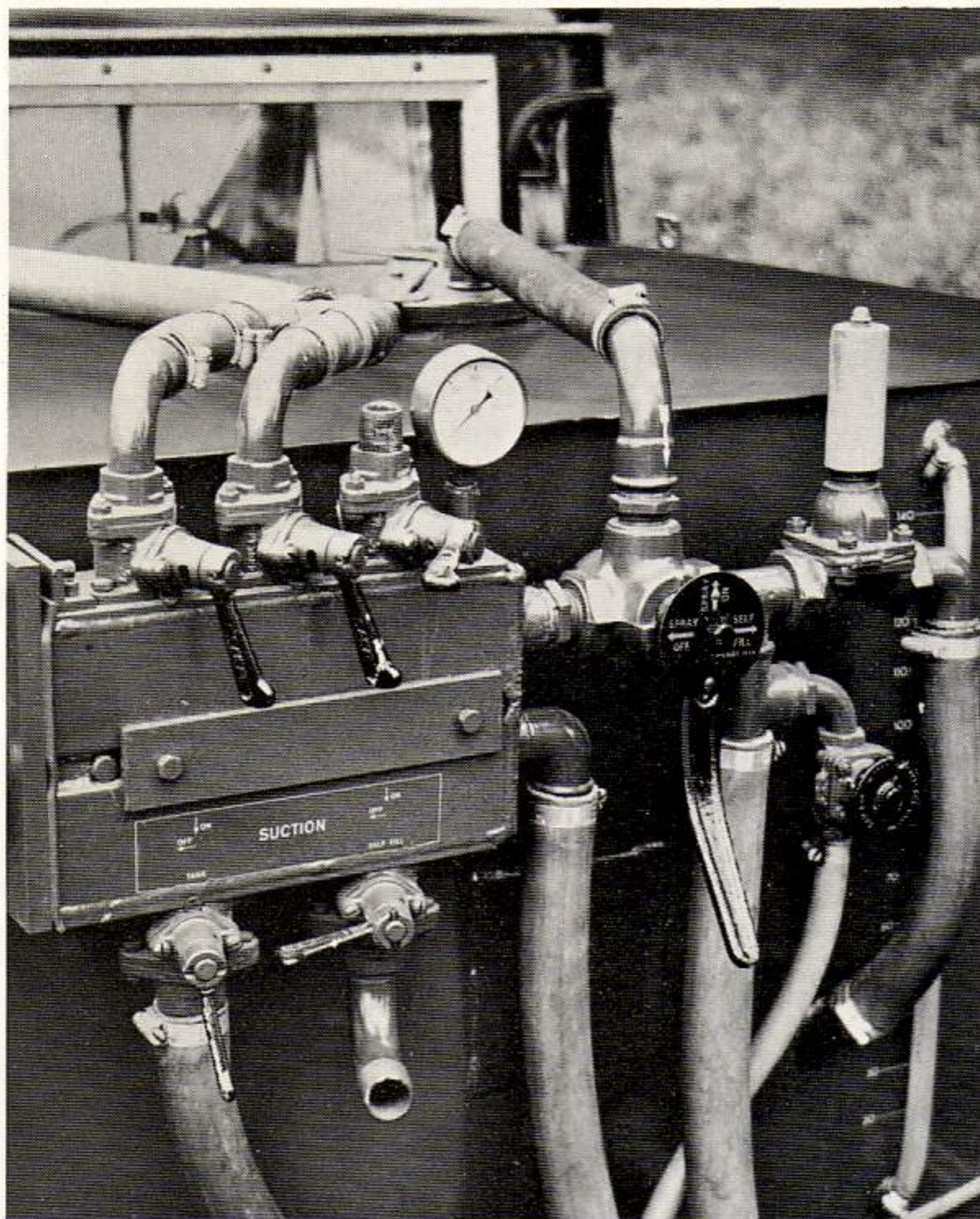
Note: See official price list.

For liquid fertilizer all controls in the cab are in rigid P.V.C.

The pressure control valve, pressure gauge and all control cocks are easily reached by the driver.

NOTE:—Nominal fitting charge for installing and testing each sprayer at the Evers & Wall works.





The double filter unit fitted to the rear face of the tank provides two elements of exceptionally large filtration area and has the main on/off control, pressure gauge, pressure control/relief valve, Tank Suction and Self-Filling control valves grouped round it for ease of operation. On occasions when using ancillary equipment at the rear of the vehicle, the ground crop boom and cab control unit can be isolated.

Land Rover parts, which must be installed by the customer or his dealer before the vehicle will be accepted at the Evers & Wall works.

Place spare wheel on bracket on bonnet over engine. Remove centre seat cushion, back squab and tailboard. Fit the following Land Rover rear P.T.O. components.

Description	For 109" Land Rovers	Old Part No.	New Part No.	
Centre Power Take off		261835	261835	1 off
Propeller Shaft, rear half		277139	533727	1 off
Propeller Shaft, front half		236941	533728	1 off
Shim for propeller shaft centre bearing		232684	232684	As required
Intermediate support for propeller shaft		277140	552997	1 off
Bolt ($\frac{1}{4}$ " U.N.F. x $\frac{3}{4}$ " long)	} Fixing intermediate support to chassis frame	255007	255207	4 off
Plain washer		2213	2213	2 off
Spring washer		3074	3074	4 off
Locking plate		277491	277491	2 off
Special nut		277490	277490	2 off
Nut ($\frac{1}{4}$ " U.N.F.)		254800	2548100	2 off
Special bolt ($\frac{3}{8}$ " U.N.F. x $1\frac{1}{8}$ " long)		509045	509045	4 off
Self Locking nut ($\frac{3}{8}$ " U.N.F.)		509751	252212	8 off

Description	For 88" Land Rover	Old Part No.	New Part No.	
Centre Power Take off		261835	261835	1 off
Propeller shaft, P.T.O. drive		236941	533728	1 off
Special bolt ($\frac{3}{8}$ " U.N.F. x $1\frac{1}{8}$ " long)		509045	509045	4 off
Self Locking nut ($\frac{3}{8}$ " U.N.F.)		509751	252212	8 off

Be sure P.T.O. fitting has latest type of engagement lever, coming out horizontally from the heel board.

**LAND-
ROVER**

Sprayers and Ancillary Equipment

88in or 109in Wheel Base Normal Control Vehicles

For Local Authorities only

Covered in Section 7 of the official price list.

Booms

18ft 9in Spray Width, 9in jet centres



Kerb Unit, mounted o/s bumper





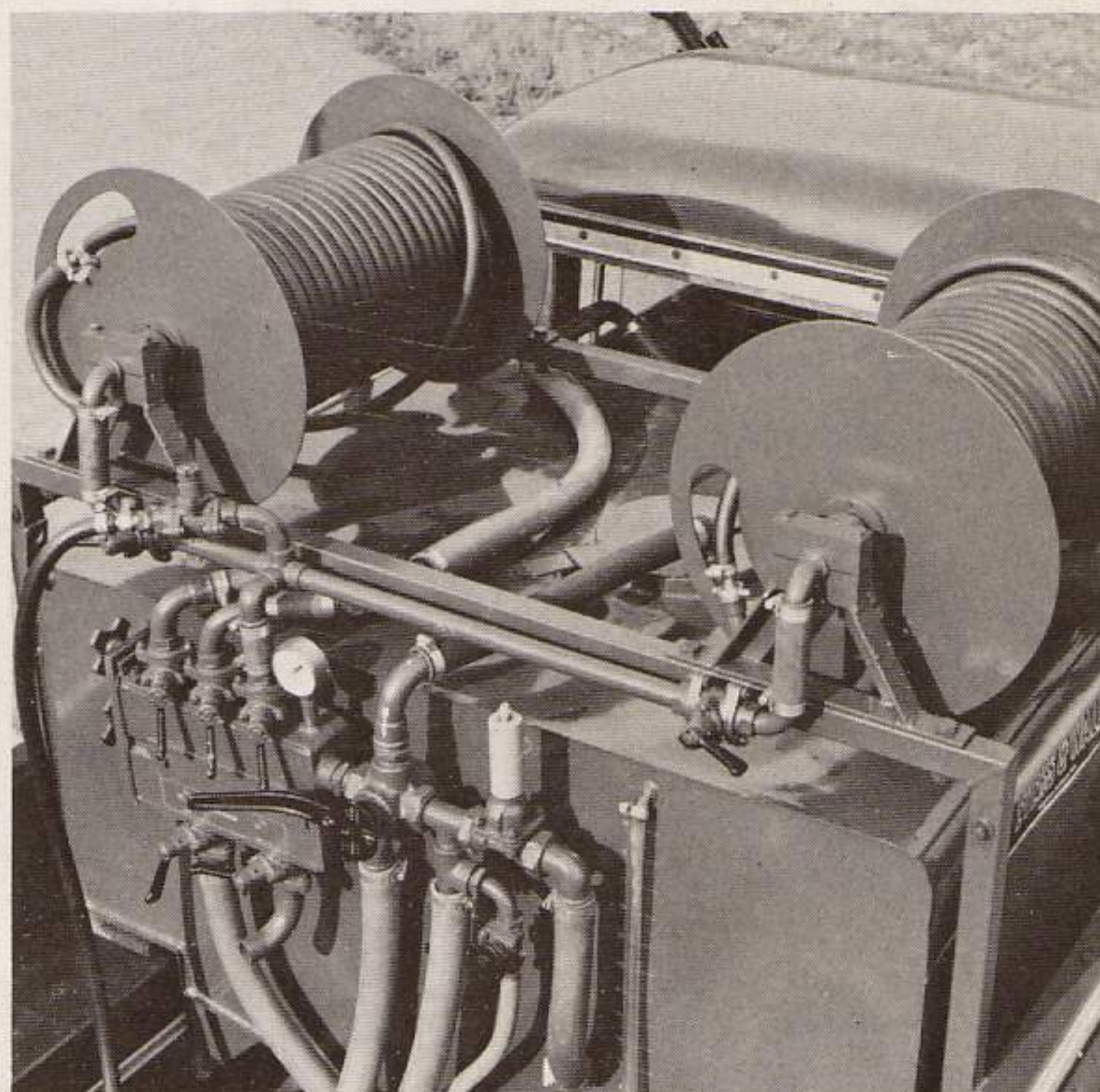
8ft cantilever Boom c/w Bracket, with 9in jet centres

Hose reels for mid mounting.

These centre feed reels have reliable rotary seals and robust manual rewind mechanism.

Alternative Pump Unit.

If desired, the rear mounted P.T.O. driven pump and bracket can be replaced on the Long Wheel Base Land Rover by one of our range of petrol engined pumping units.



For full technical details of any item of equipment on this leaflet, please write to:—

Evers & Wall Limited

Lambourn Woodlands Nr Newbury Berkshire Lambourn 444

