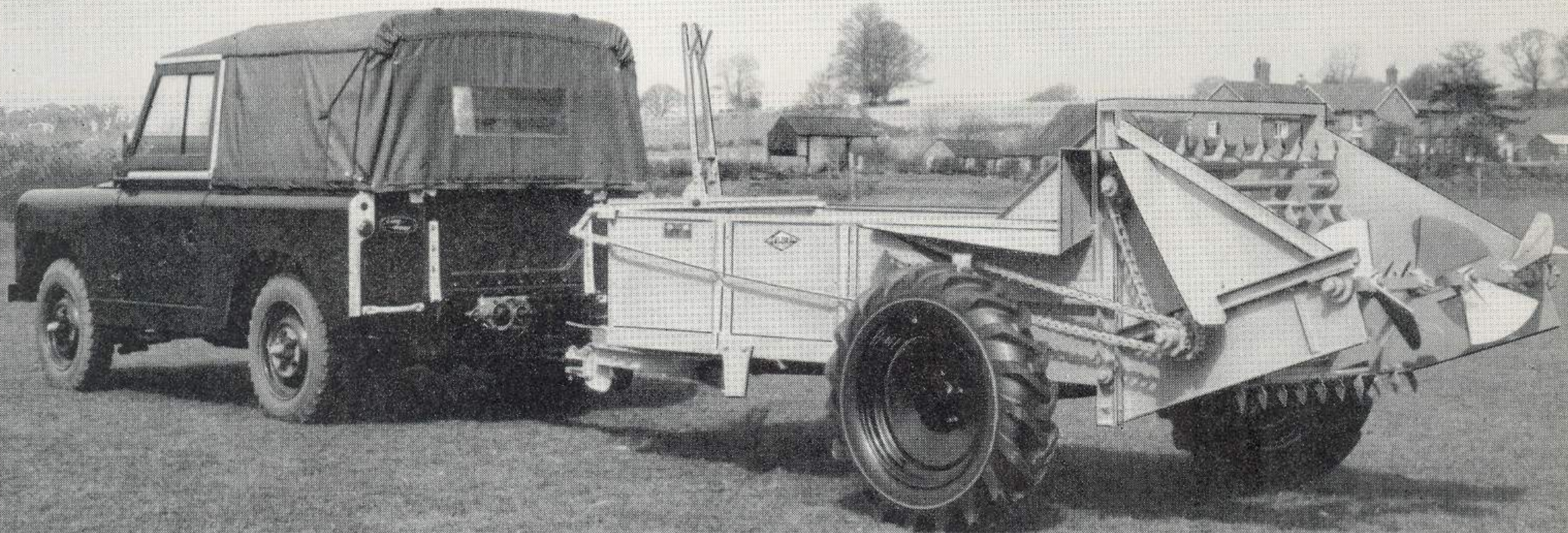


SALOPIAN MANURE SPREADERS

AS APPROVED BY THE ROVER CO. LTD.
FOR USE WITH THE

**LAND-
ROVER**



FOR THE FARMER WHO IS WITHOUT
P.T.O. AND FOR THE SMALLER FARM

THE
LAND DRIVEN
"Quickspreader"

OPERATES WITH CONSISTENT EFFICIENCY

Designed for the Farmer who is without a power take-off, this Salopian Land Driven Manure Spreader is unsurpassed in its class for the quick and even spreading of all types of farmyard manure. Strongly constructed and easily manoeuvrable it weighs 15 cwt. unloaded with a carrying capacity of 25/30 cwt. The whole unit is supported on a steel axle fitted with heavy duty self-aligning hubs. Heavy tread pneumatic tyres give an even drive to the distributing mechanism.

A Manure Spreader that will operate at long periods with consistent efficiency.

S.K.H.

PREES
Telephone : Prees 331-5

Export enquiries to:
KENT HOUSE . MARKET PLACE . OXFORD CIRCUS . LONDON W.I.
Telephone : MUSEum 8901-6.

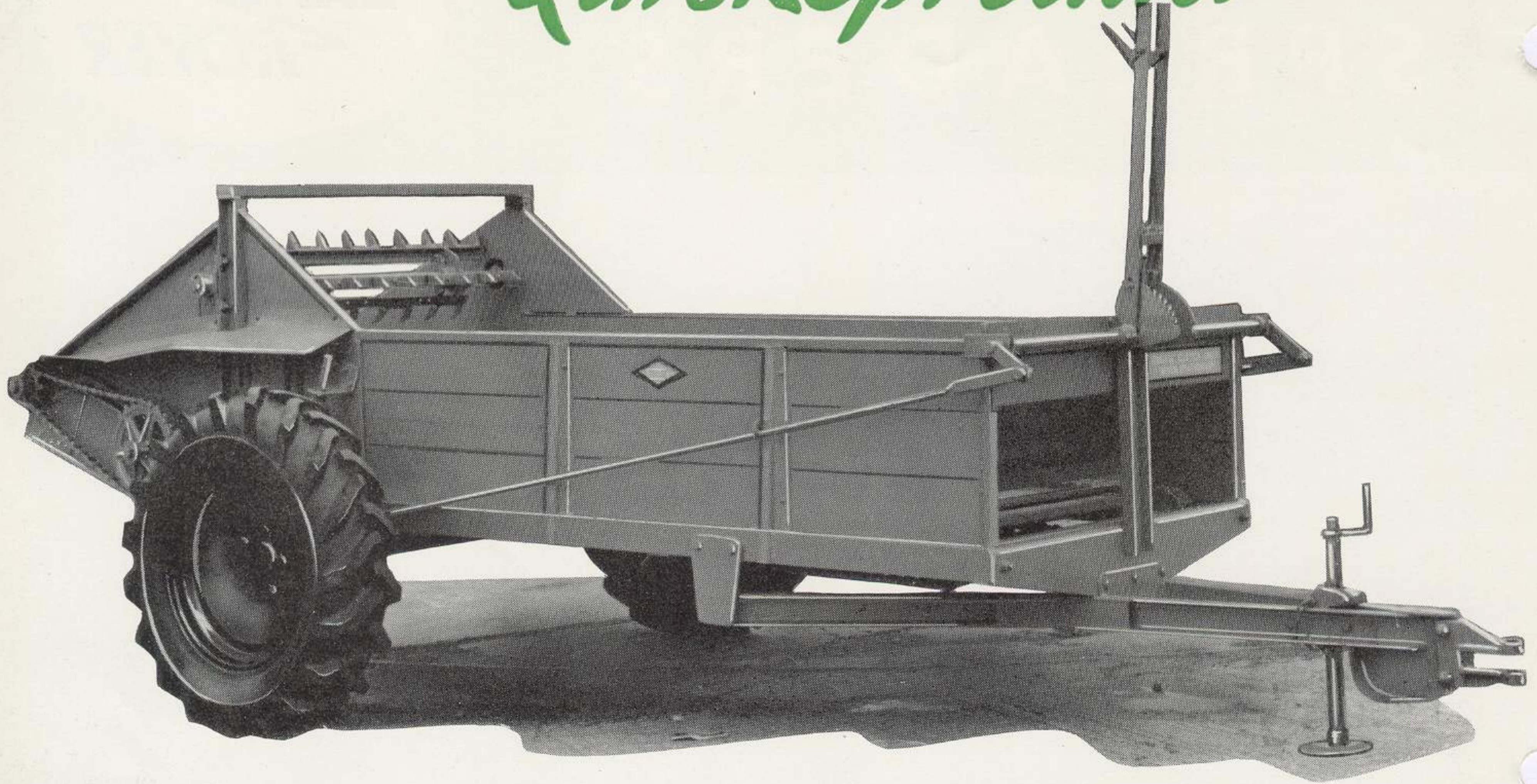
S. K. H. & SON
(Salopian-Kenneth Hudson & Son)
WHITCHURCH

SHROPSHIRE
Telegrams : Implements-Prees

Telegrams : Owenorgex, London



SALOPIAN "Quickspreader"



SPECIFICATIONS

CHASSIS

Rolled steel angle and channel of large dimensions, braced diagonally welded into a firm unit. Reinforced tow bar welded integral with chassis. Main axle detachable and fitted with self-aligning bearings.

BODY

Well seasoned timber. Painted.

CONVEYOR

Close pitched conveyor bars ensure adequate diffusion of load and are operated by Ewart type chain.

DRIVE

Roller chain drive to all shafting via 750 x 20 pneumatic wheels.

CUTTING AND DISTRIBUTION

Very even spread is obtained by the design and layout of Cutter Bar Assemblies. Two cutting barrels of steel construction throughout revolve at high speed, the main barrel being pitched close in relation to the conveyor shaft, thus eliminating dropping wastage. Distributor blades are so arranged that a wide and equal spread is secured. Blades are detachable and can be refitted in the event of damage by stones, etc., without removing the rear-end mechanism.

GUARDS

All moving parts are adequately protected against damage either to the mechanism or to the operator.

LUBRICATION

All bearings that require lubrication are fitted with grease nipples easily accessible for maintenance purposes. Axle bearings are provided with conduits for easy lubrication.

JACK

Quickly retractable Jack or ring-type hitch fitted at the forward end. *STATE TYPE REQUIRED.*

SIZE :

Overall width	6 ft. 5 ins.
Overall length	14 ft. 8 ins.
Overall height	5 ft. 10 ins.
Loading height	3 ft. 4 ins.
Capacity	25/30 cwt.

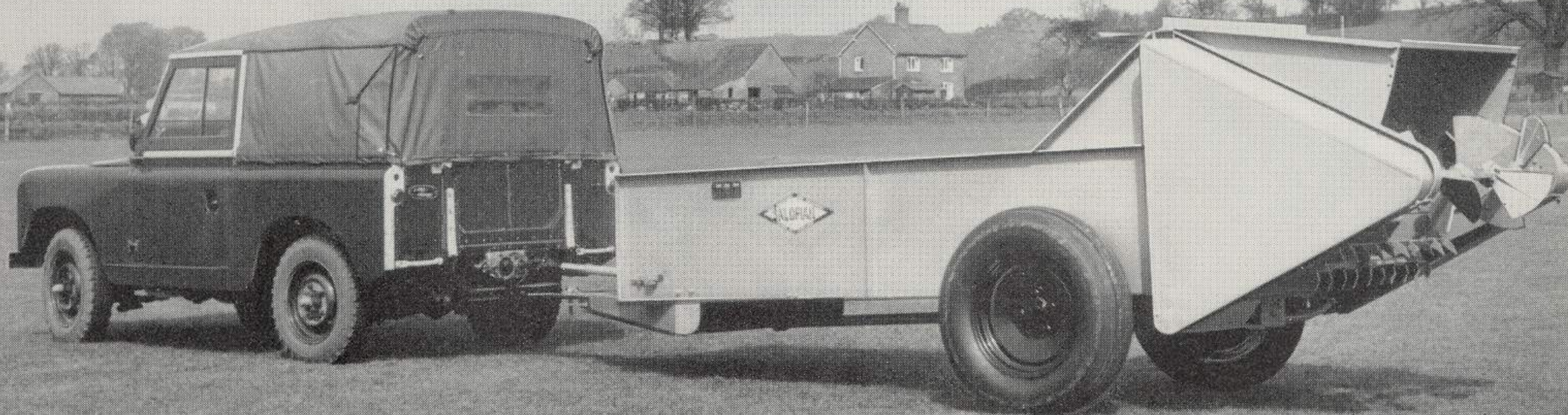
SHIPPING SPECIFICATIONS

Length	Width	Height	Nett & Gross Weight	
15 ft. 3 ins.	6 ft. 4 ins.	5 ft. 0 ins.	482.01 cubic ft.	1680 lbs.
4M.648	1M.930	1M.524	13.65 cubic meters.	762 kgs.

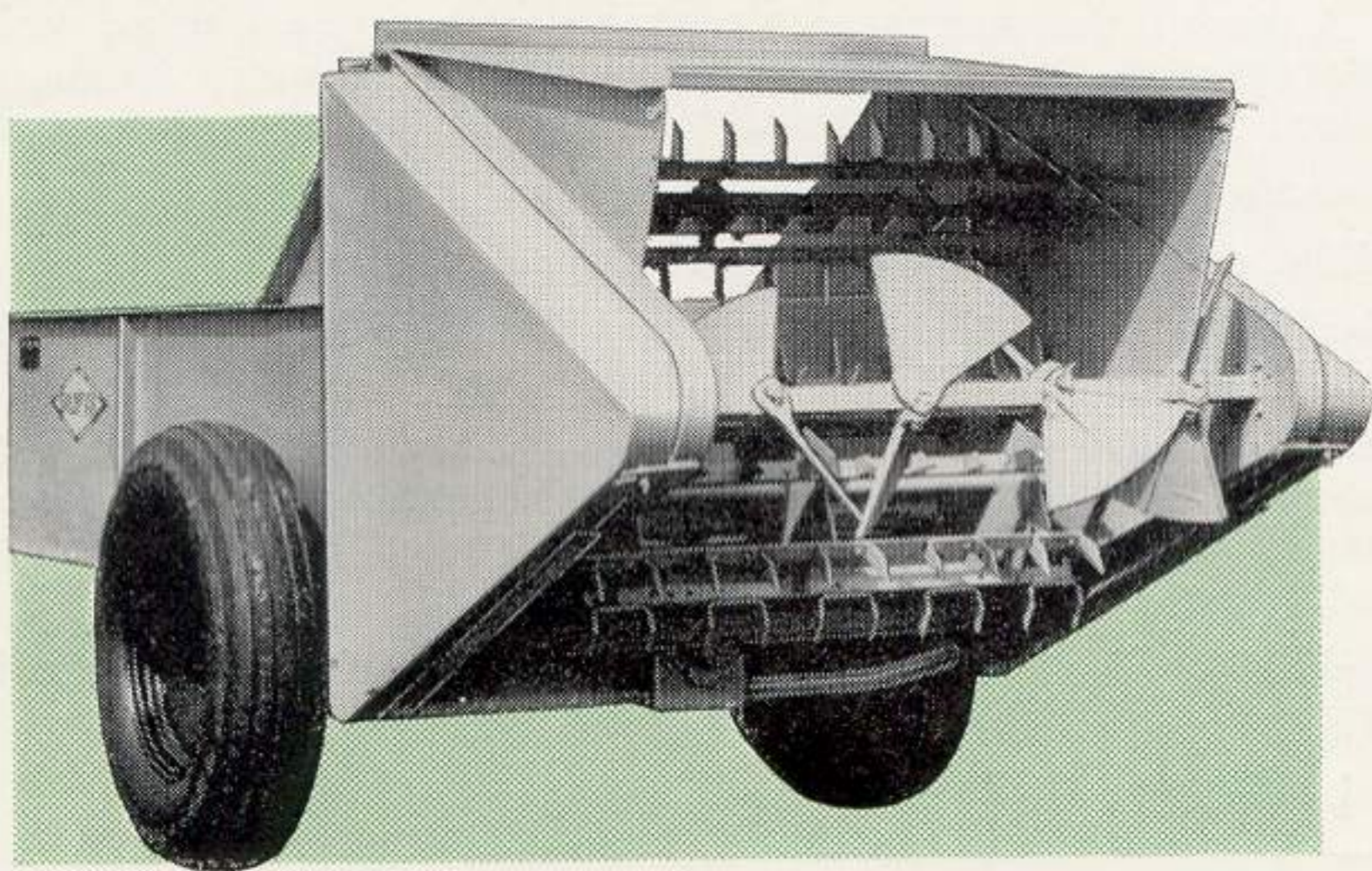
SALOPIAN

"EVENSREADER"

(Power Driven)



THE ALL WEATHER MACHINE THAT SHREDS
AND DISTRIBUTES FARM YARD MANURE WITH
AMAZING SPEED AND EVENNESS.



Carefully designed Distributing and Cutting mechanism results in evenness of distribution.

The name "Evensreader" aptly describes this machine's performance for all types of farmyard manure can be disintegrated and spread with amazing evenness. Long straw manure is successfully cut and distributed and large lumps are broken by the improved cutting barrels, the lower one of which is designed to prevent the loss of wet manure or lumps from the base of the machine. An adjustable hood prevents the escape of large pieces from the top of the beaters and also protects the operator. The whole unit is mounted on a steel axle with heavy duty roller bearing hubs set well to the rear. Chassis sides and drawbar are of heavy gauge pressed steel welded and braced. An adjustable Jack is provided at the forward end.

The implement will deal with manure under the most difficult conditions. With its efficient power drive, wheel slip is eliminated and damage to the land is reduced to a minimum.

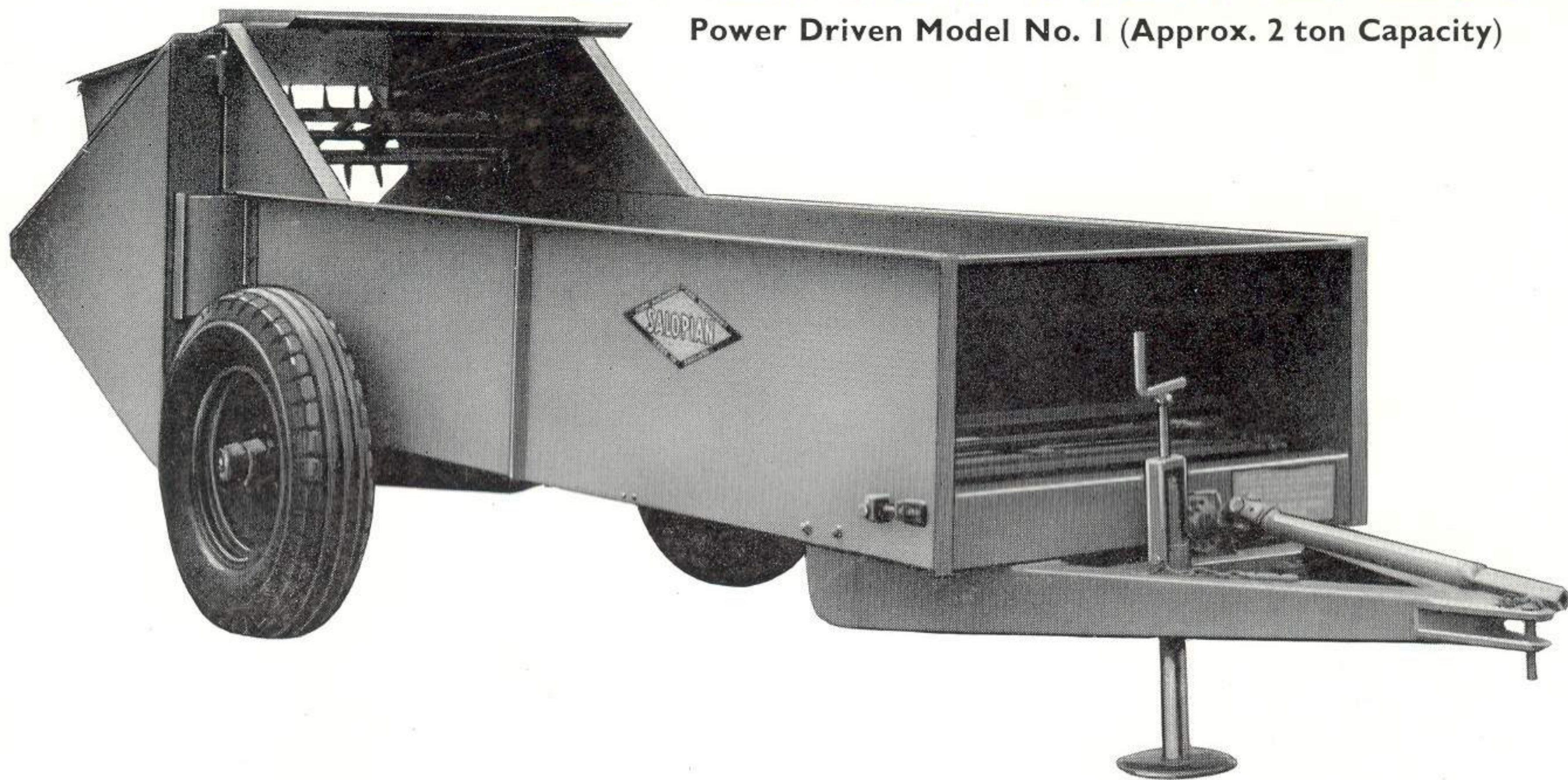
AS APPROVED BY THE ROVER CO. LTD. FOR USE WITH THE

LAND
-ROVER

SALOPIAN

"EVENSREADER"

Power Driven Model No. 1 (Approx. 2 ton Capacity)



S P E C I F I C A T I O N S

EFFICIENT POWER DRIVE

A new and improved transmission has been designed and fitted. The power take-off drive of the tractor is taken through a telescopic arrangement fitted at either end with universal joints to a SAFETY DEVICE set to shear in cases of overload or obstruction. The main drive shaft is floating and has flexible coupling at each end.

A pair of bevel gears of special hardened steel, transmit the power from this shaft to the distributing and conveyor mechanism. These gears are enclosed in a precision built oil bath gear box. Smooth and trouble-free running is ensured by the specially designed shaft bearings and the use of ball thrust bearings behind each gear. The whole assembly runs in OIL.

DISTRIBUTING AND CUTTING MECHANISM

This mechanism includes two cutting barrels specially set in relation to the conveyor and to each other and these throw disintegrated manure on to pressed steel distributor blades. The size, speed and disposition of this mechanism, together with the adjustable hood, has been carefully designed as a result of exhaustive tests and evenness of distribution is the result. The mechanism is driven through sprockets and chains of the best quality.

THE CONVEYOR

The power driven conveyor consists of two lengths of malleable link chain with pressed steel channel section bars fitted at 12 in. intervals. Three spreading rates are provided as standard, but if specially ordered a component can be supplied to give three extra feeds.

THE GUARDS

Easily operated sheet metal guards covering all chain drives are provided.

LUBRICATION

Great care has been taken to provide adequate and efficient lubrication. A most important feature is that all bearings are fitted with oil impregnated bronze bushes which do not require frequent attention. Nipples are fitted to all bearings that require lubrication.

*One standard coupling supplied with each machine.

When ordering please specify the type required.

01-503-035 Universal Coupling and Shaft with spline to suit Land-Rover, P.T.O. Shaft, $1\frac{3}{8}$ in. diameter.

02-503-001 Universal Coupling and Shaft with Spline to suit Tractor, P.T.O. Shaft, $1\frac{3}{8}$ in. diameter, suitable for "Fordson Standard," "Fordson Major," "David Brown," "International" and "Marshal."

02-503-002 Universal Coupling and Shaft with Spline to suit Tractor, P.T.O. Shaft, $1\frac{1}{8}$ in. diameter, suitable for "Ferguson."

S H I P P I N G S P E C I F I C A T I O N S

Length	Width	Height		Nett & Gross Wt.
17 ft. 4 ins.	5 ft. 6 ins.	5 ft. 7 ins.	532.27 cubic ft.	2324 lbs.
5M.283	1M.676	1M.701	15.072 cubic meters.	1054 kgs.

J. G. & S. 5.58 5M. Printed in England.

LAND-ROVER EXTRAS REQUIRED:

For "QUICKSPREADER" towing equipment (eight holed plate).

For "EVENSREADER" rear power take-off unit (towing equipment, eight holed plate, included).