



SEARLE
CONTINENTAL & ULTIMATE





SEARLE

CONTINENTAL & ULTIMATE

THE CARAWAGON CONTINENTAL has a dual personality. For everyday use it is a compact, comfortable 6 seater with vast luggage space—for vacation touring it is a versatile luxury Motor Caravan, with sure-footed 4 wheel drive and flexible dual-range gear box.

It includes many comfort-designed features in its construction—double skin roof with multiple ventilators for a cool interior in hot weather—washing and cooking facilities conveniently arranged to be used whilst sitting down and, of course luxurious sleeping accommodation.

The Land Rover long chassis 4 door Station Wagon forms the basis of the Carawagon Continental. The seating comprises five luxuriously upholstered seats—all forward facing for extra passenger comfort—plus a single dickey seat in the rear. The deep seat cushions easily convert into a 6'2" double bed, whilst the front seats fold down to form a lounging or dining area with large folding table. All the seats have extensive storage space beneath, with optional roof level pockets for day-to-day paraphernalia.

A low elegantly designed unit for clothes, food and water storage is finished in natural mahogany and Formica. The cooking and working facilities are convenient yet unobtrusive. They incorporate a pumped water supply and folding cooker with grill mounted on the rear door. The Carawagon Continental has a fully tropicalized roof of double skin aluminium construction with four ventilators. For sight-seeing in comfort it is also fitted with alpine windows. The roof is able to take a filming platform or the largest of the Searle range of heavy-duty tubular roof racks—10ft x 5ft—for luggage or a small boat.

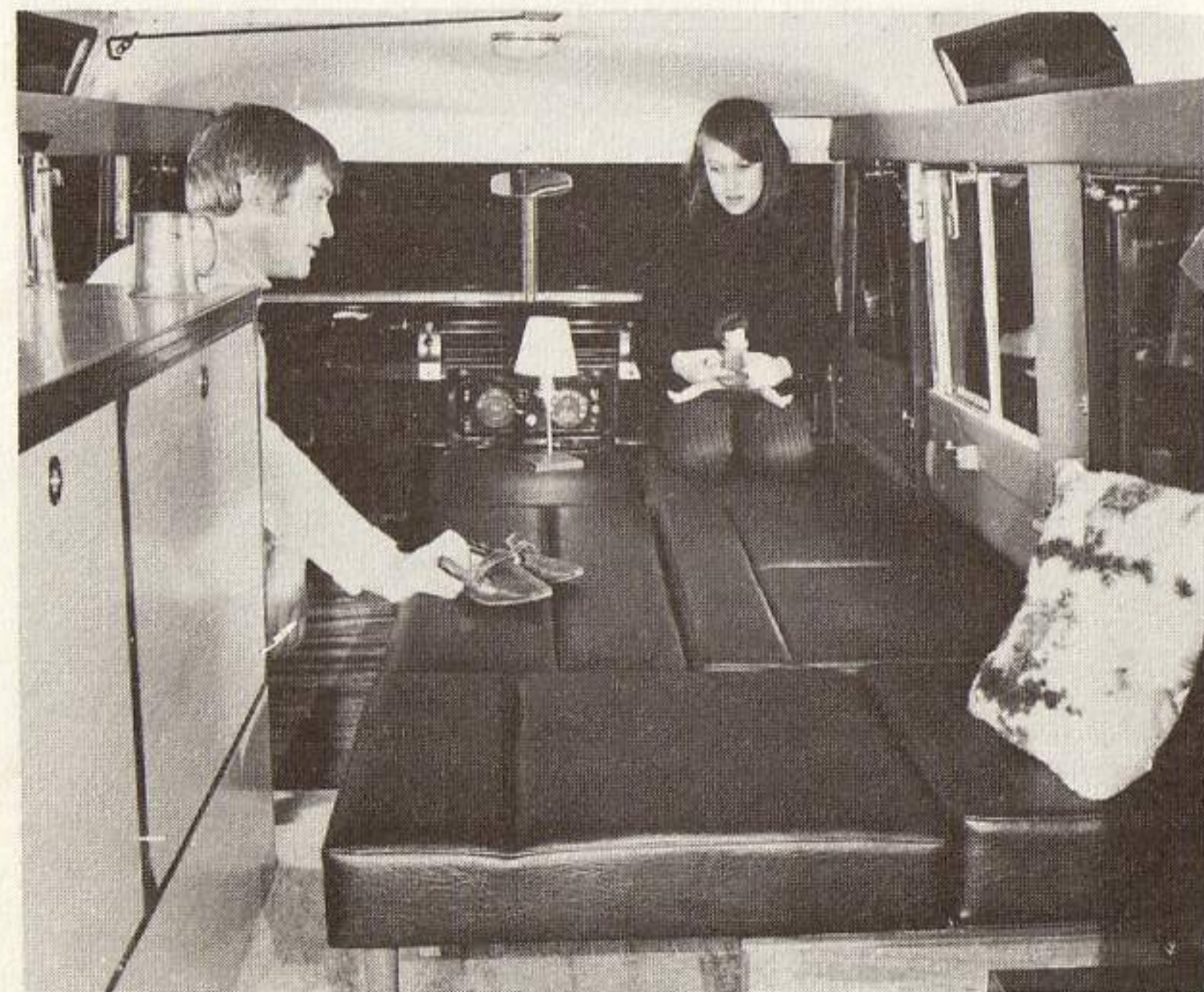
THE CONTINENTAL ULTIMATE

First choice for the traveller who wants the comfort of the Carawagon Continental AND the benefit of full standing room.

The Continental ULTIMATE incorporates all the facilities of the Carawagon Continental PLUS the SEARLE ELEVATING ROOF A unique single action coach-built roof which elevates over an area 8ft x 4ft. It has been tried and proved for many years by the BBC and various Government departments.



Relaxing in comfort

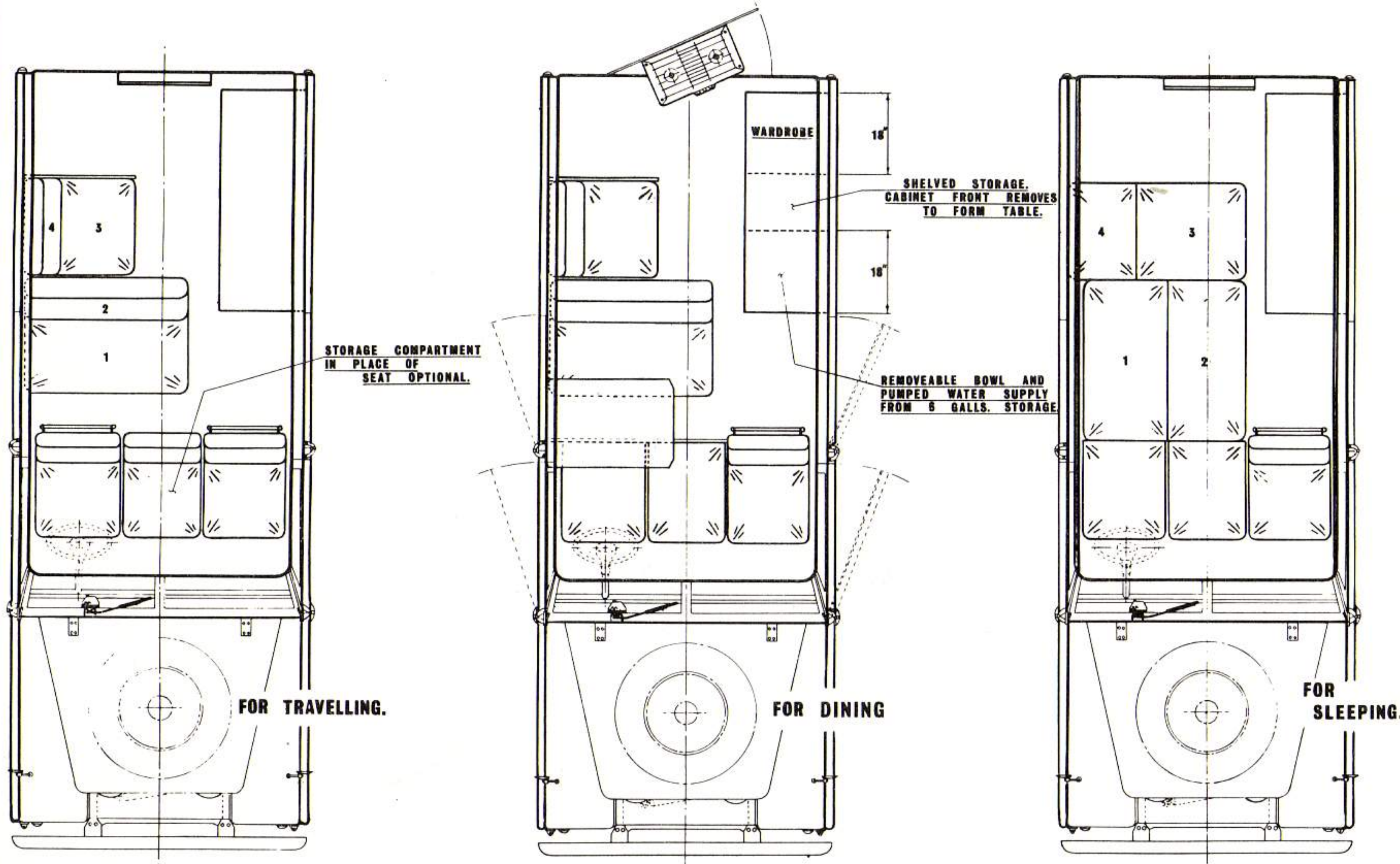


Interior set for sleeping



SPECIFICATION

THE CARAWAGON CONTINENTAL.



ENGINES

4-CYLINDER PETROL

No. of cylinders	.. 4.
Bore	.. 3-562" (90-49 mm.)
Stroke	.. 3-5" (88-9 mm.)
Capacity	.. 2,286 c.c. (139-5 cu. in.)
Valve position	.. Overhead.
Compression ratio	.. 7 : 1
Max. B.H.P.	.. 77 at 4,000 rev./min. (Gross).
Max. torque	.. 124 lb. ft. (17 mkg.) at 2,500 rev./min. (Gross).

6-CYLINDER PETROL

No. of cylinders	.. 6.
Bore	.. 3-063" (77-8 mm.)
Stroke	.. 3-625" (92-075 mm.)
Capacity	.. 2,625 c.c. (160-3 cu. ins.)
Valve position	.. Overhead inlet, inclined side exhaust.
Compression ratio	.. 7-8 : 1 (7-0 : 1 optional).
Max. B.H.P.	.. 93 at 4,500 rev./min. (Gross).
Max. torque	.. 135 lb. ft. (18-6 mkg.) at 1,750 rev./min. (Gross).

4-CYLINDER DIESEL

No. of cylinders	.. 4.
Bore	.. 3-562" (90-49 mm.)
Stroke	.. 3-5" (88-9 mm.)
Capacity	.. 2,286 c.c. (139-5 cu. in.)
Valve position	.. Overhead.
Compression ratio	.. 23 : 1.
Max. B.H.P.	.. 67 at 4,000 rev./min. (Gross).
Max. torque	.. 105 lb. ft. (14-5 mkg.) at 1,800 rev./min. (Gross).

Overall dimensions

Wheelbase	109 ins.
Track	51½ ins.
Ground clearance	9½ ins.
Turning circle	47 ft.
Overall width	66 ins.
Overall length	175 ins.
Overall length incl. rear mounted spare wheel	181 ins.
Height	81 ins.

Weight

with spare wheel and tools
1 ton 16 cwt.



THE CONTINENTAL



THE ULTIMATE

QUANTRILL'S
159C, WEST ROAD,
SHOEBURYNNESS,
PET SUPPLIES & D.I.Y.
PHONE 2884

CARAWAGON INTERNATIONAL LTD
THAMES STREET · SUNBURY · MIDDLESEX · ENGLAND
Telephone: Sunbury 85205